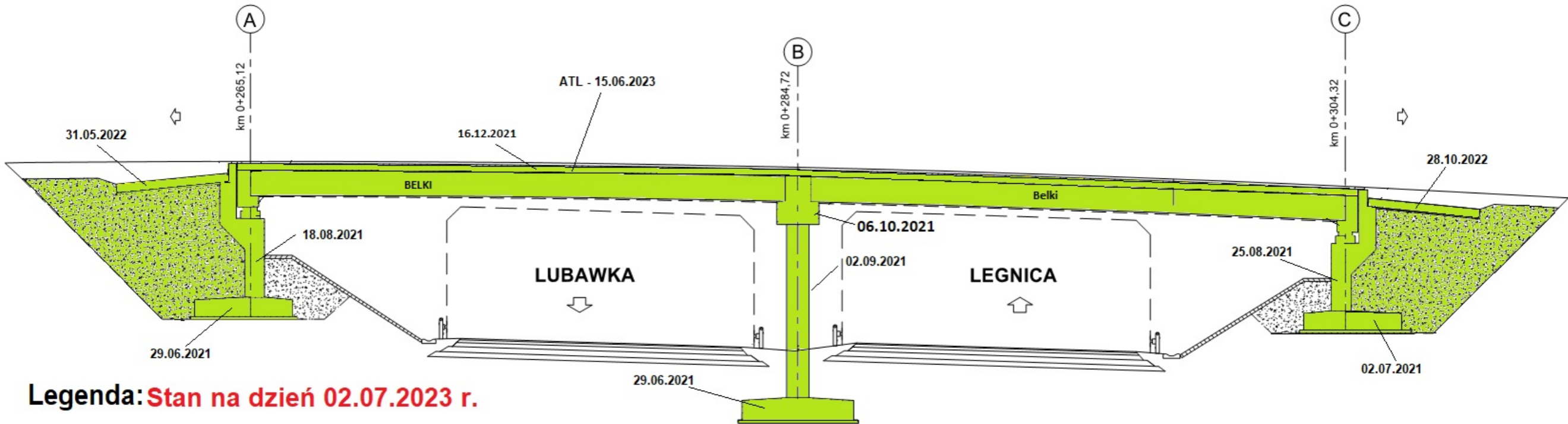


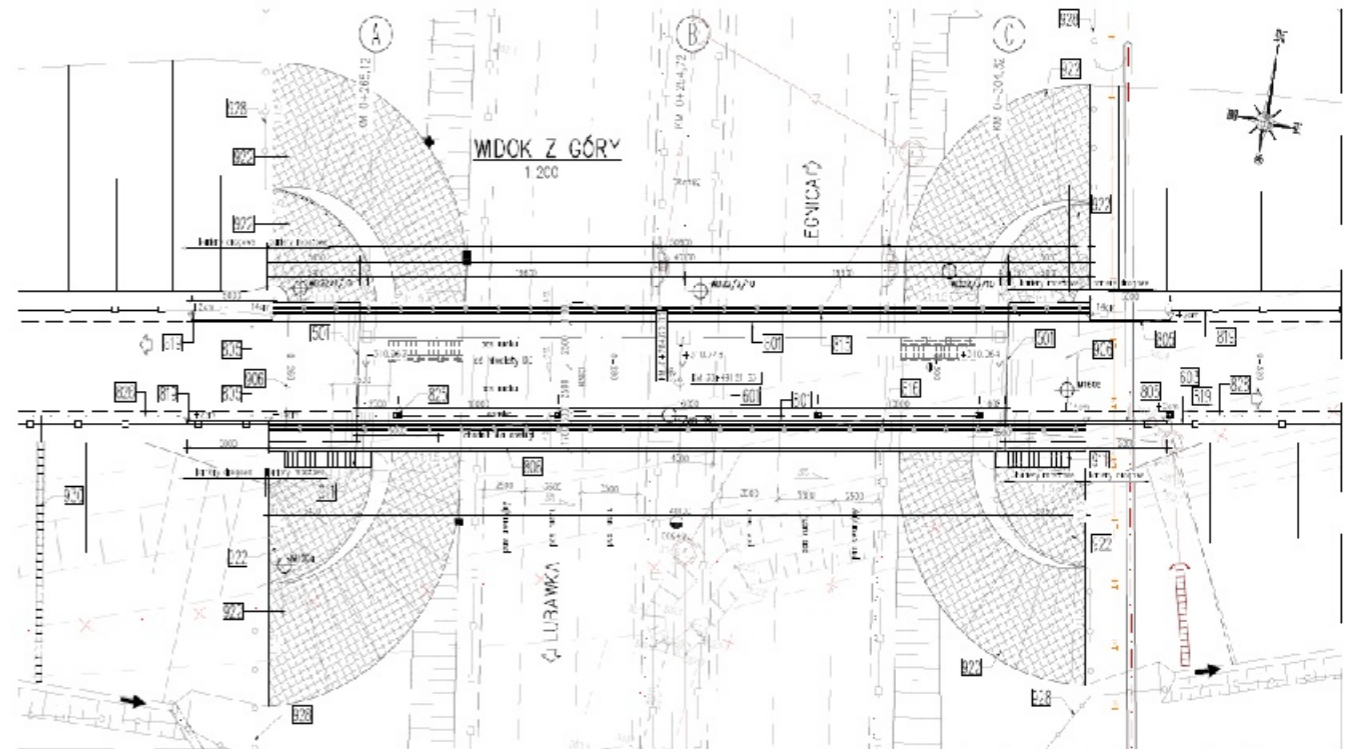
WD-22

km 38+491,21



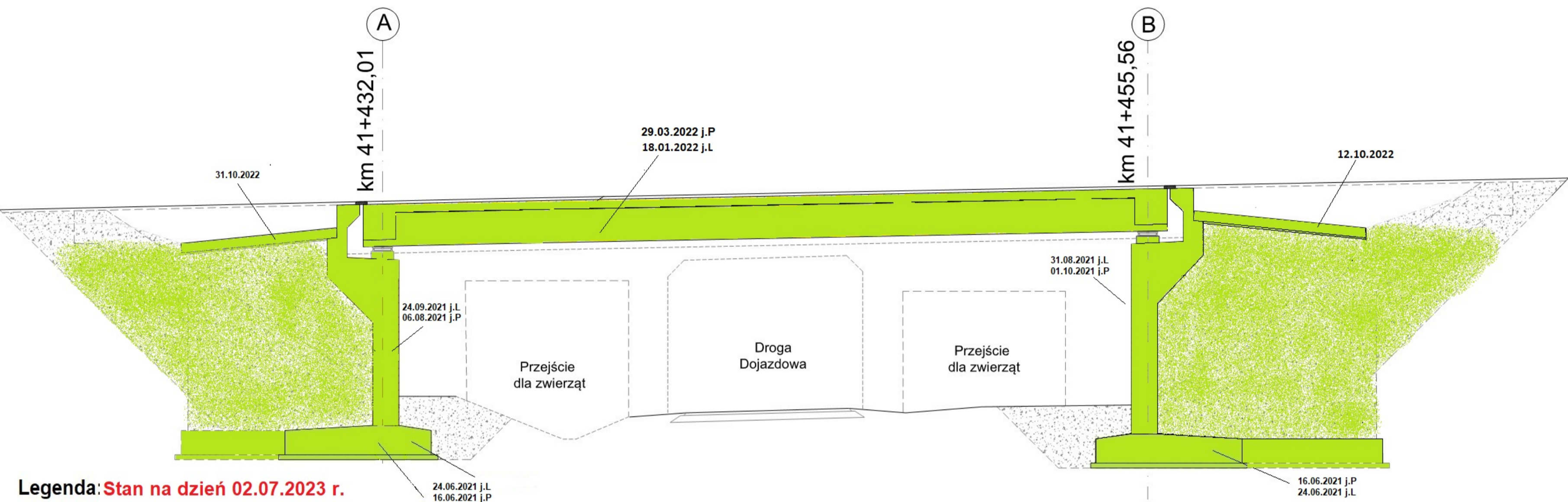
Legenda: Stan na dzień 02.07.2023 r.

- Roboty w trakcie wykonywania
- Roboty zakończone



WS-24

km 41+431,41



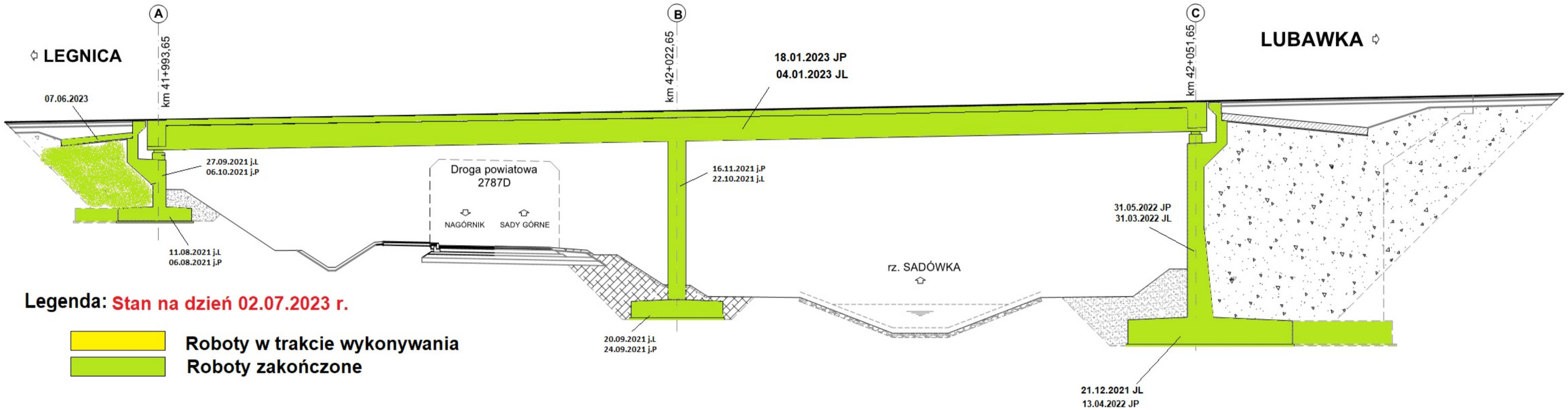
Legenda: Stan na dzień 02.07.2023 r.

- Roboty w trakcie wykonywania
- Roboty zakończone



MS-25

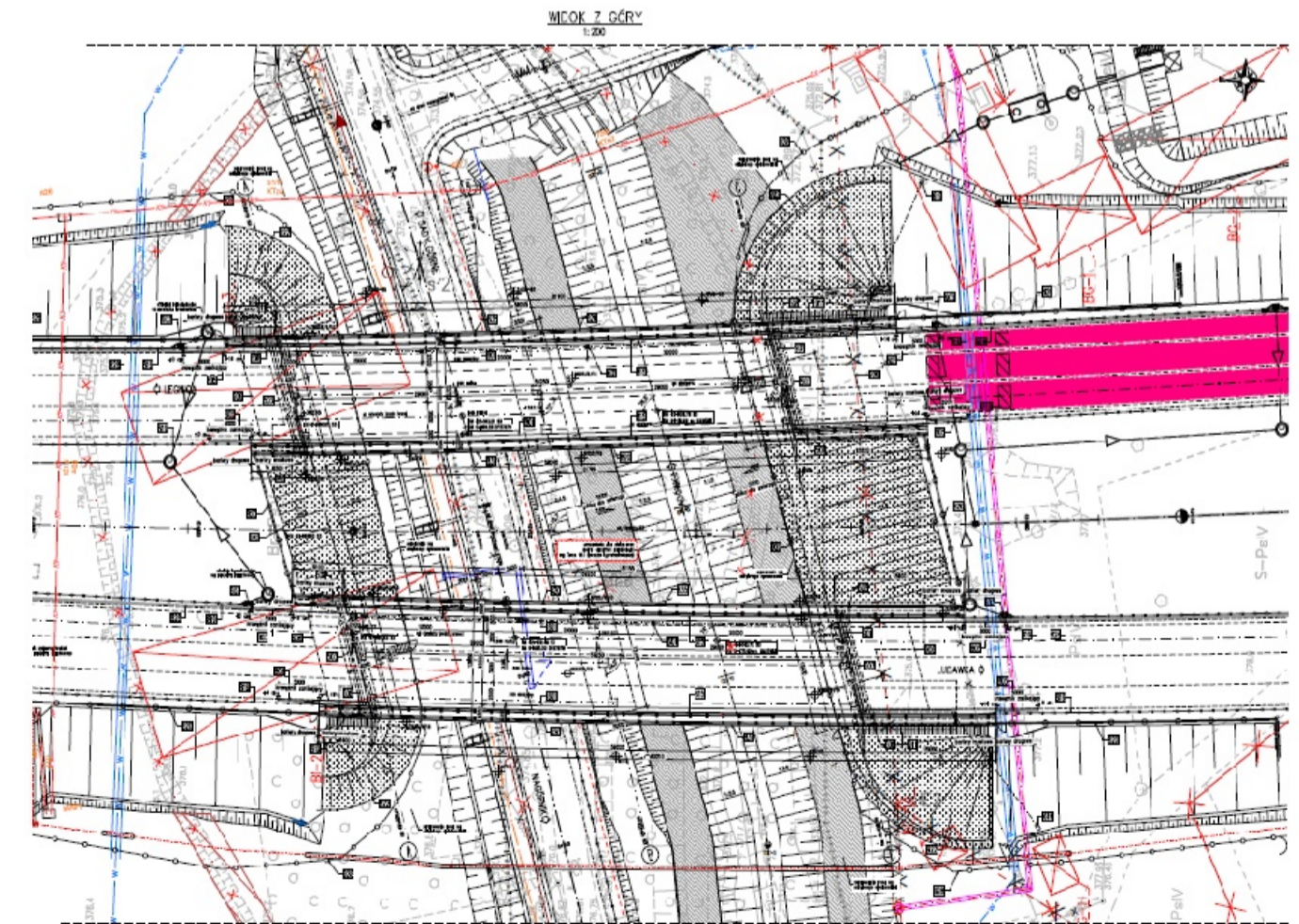
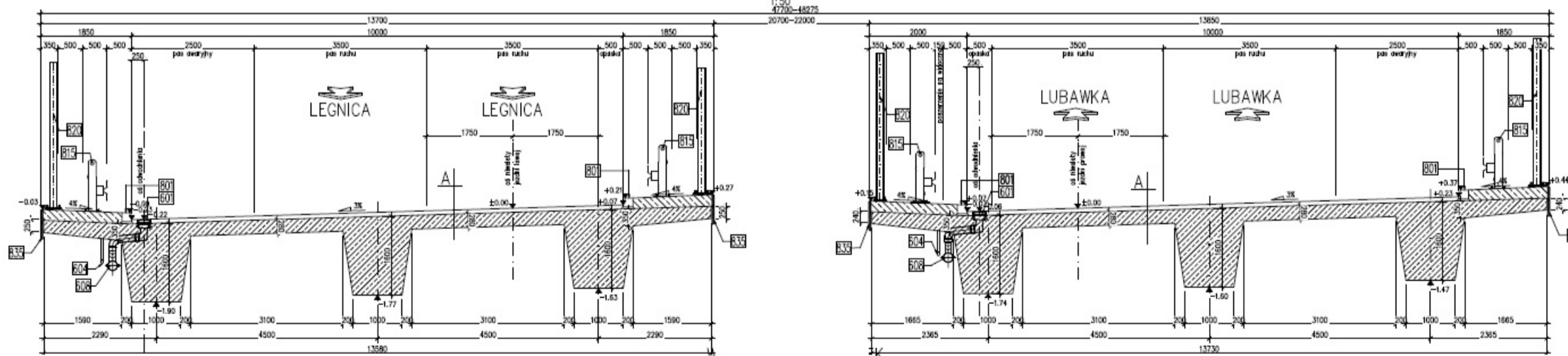
km 41+996,65



Legenda: Stan na dzień 02.07.2023 r.

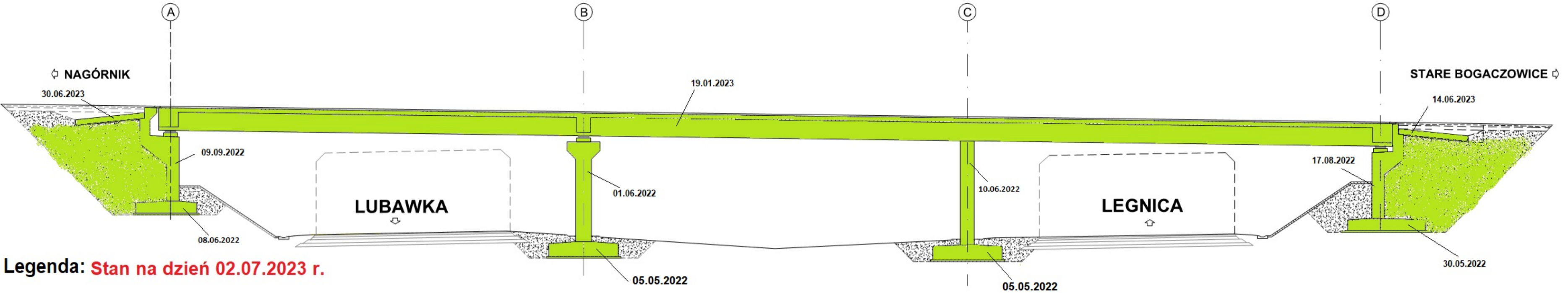
- Roboty w trakcie wykonywania
- Roboty zakończone

PRZEKRÓJ POPRZECZNY
PRZESŁOYT NORMALNY



WD-27

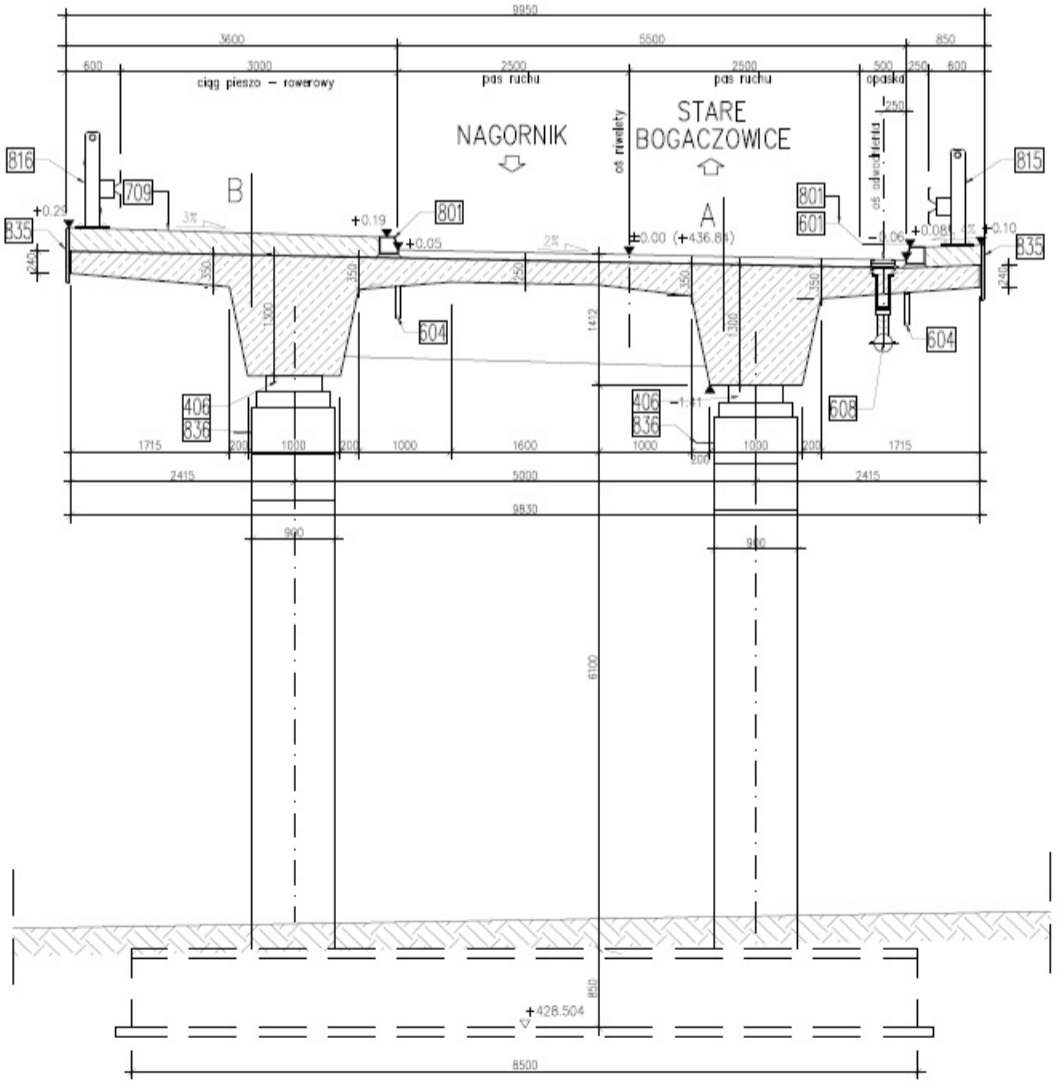
km 44+702,77



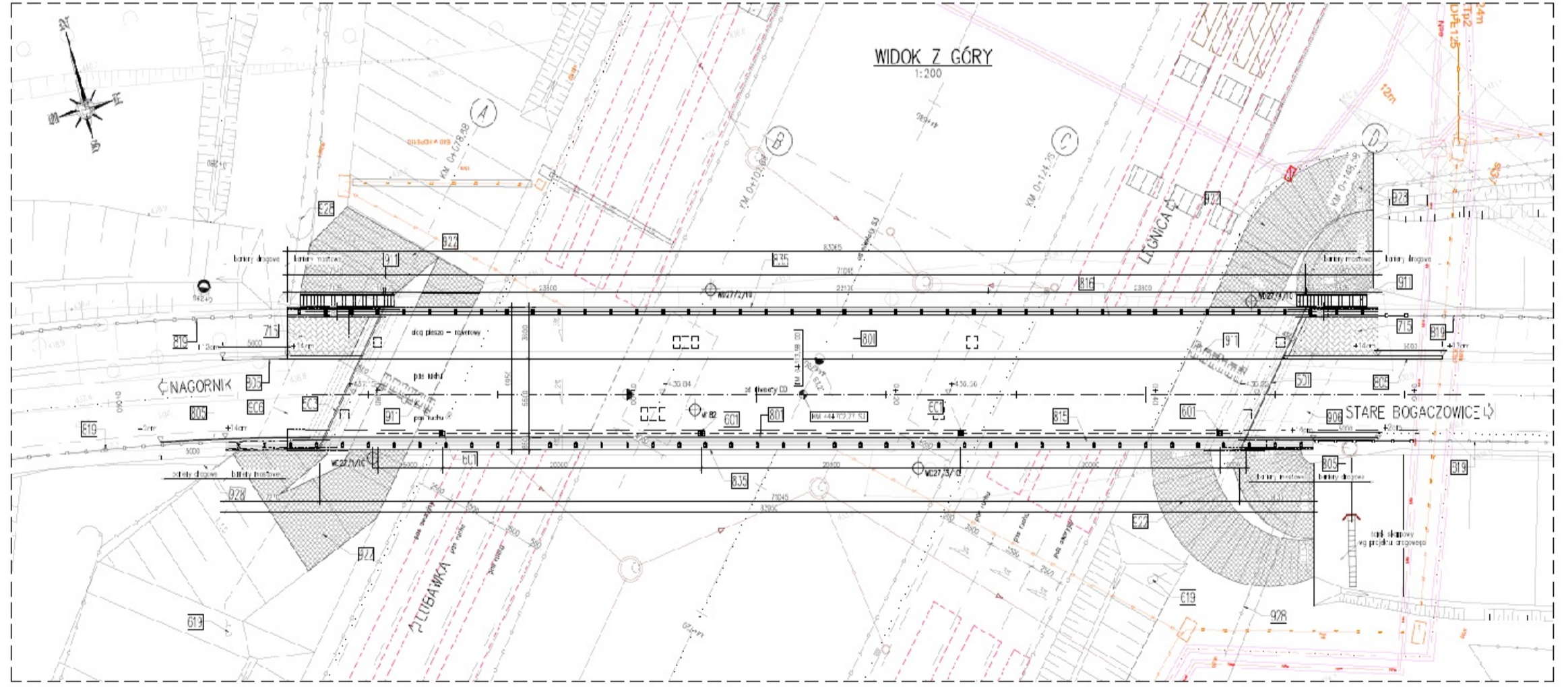
Legenda: Stan na dzień 02.07.2023 r.

- Roboty w trakcie wykonywania
- Roboty zakończone

PRZEKRÓJ POPRZECZNY
Z WIDOKIEM NA FILAR
1:50

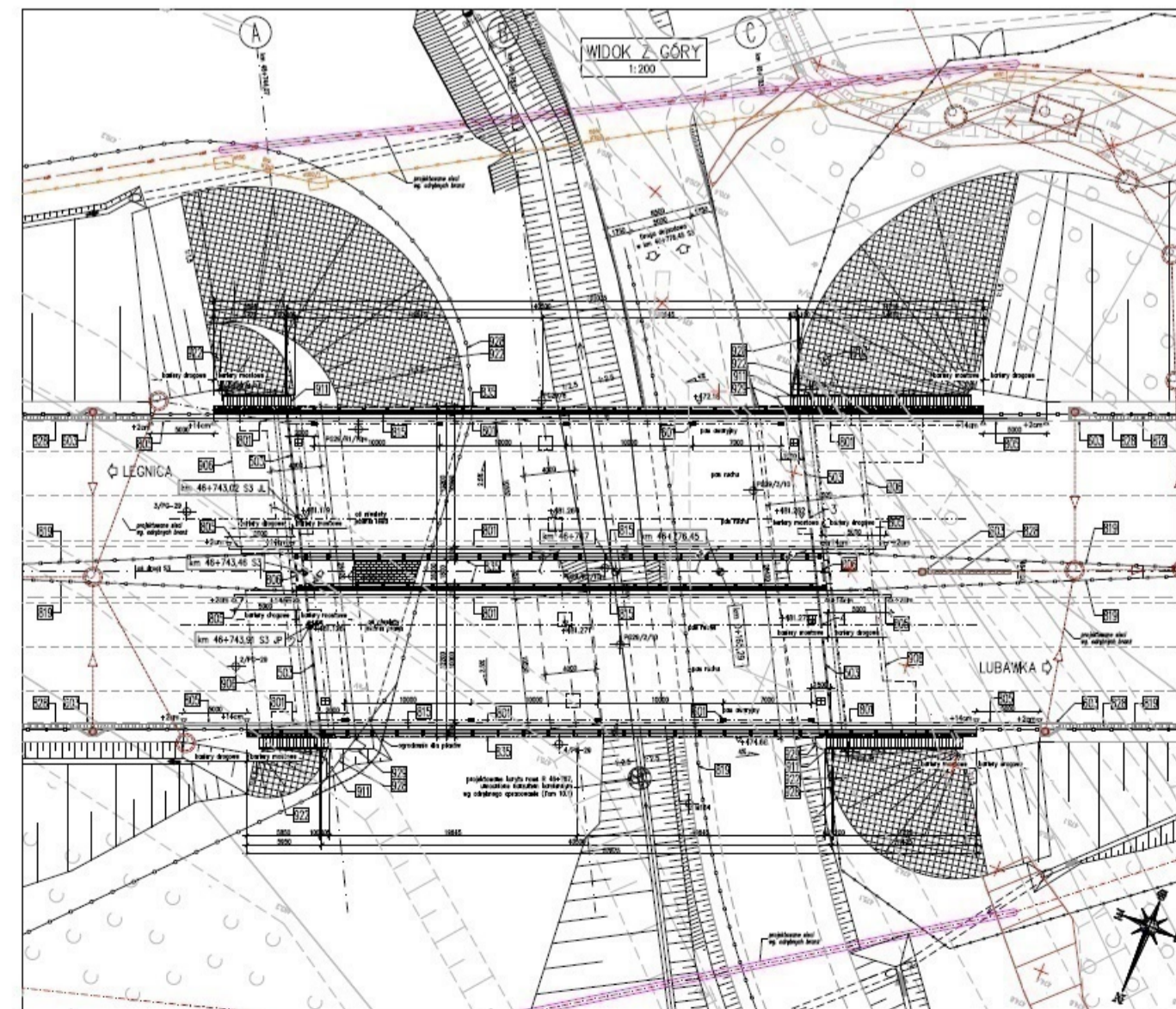
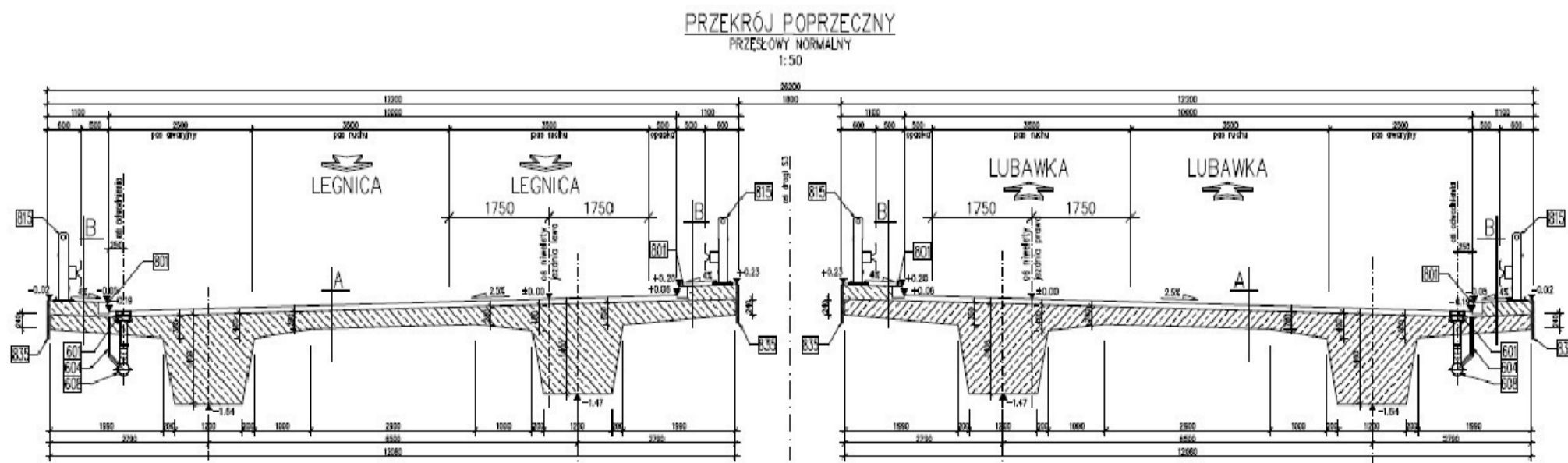
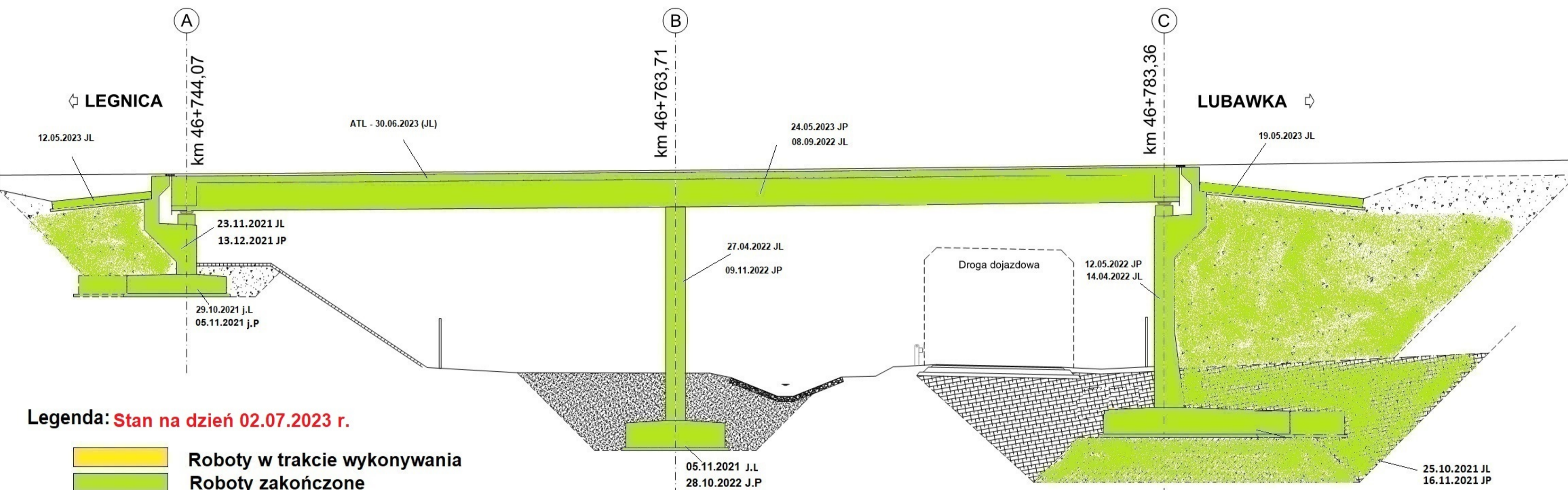


WIDOK Z GÓRY
1:200



PG-29

km 46+743,46

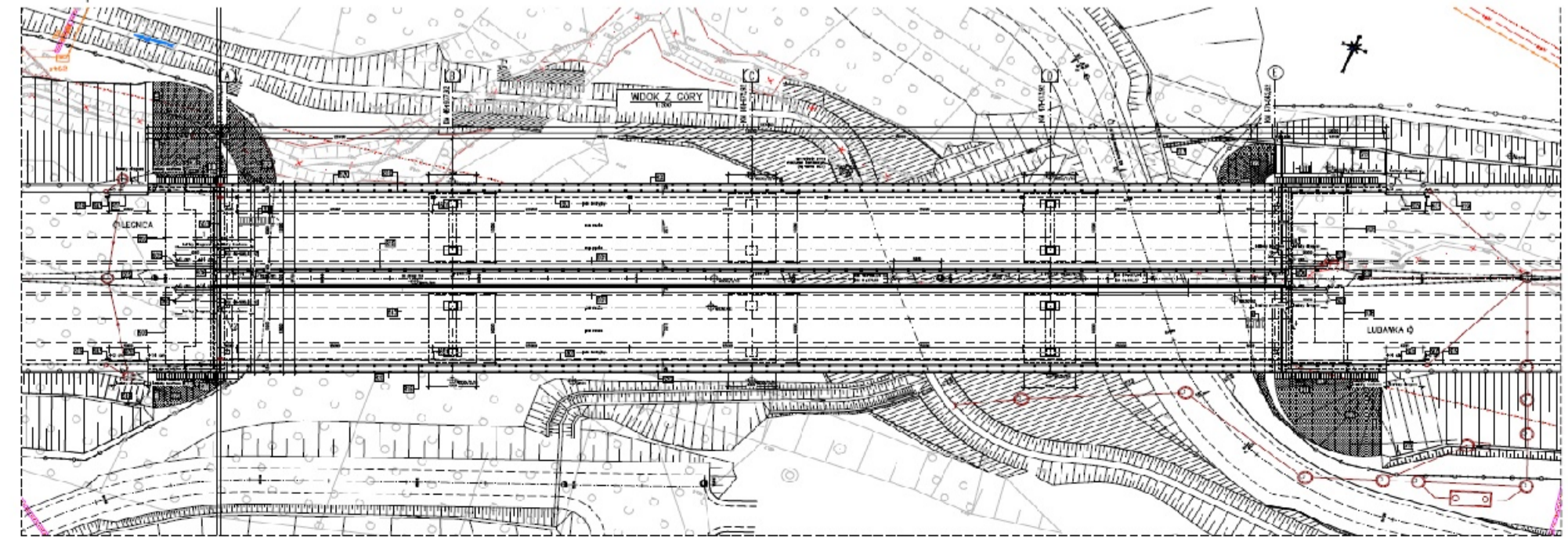
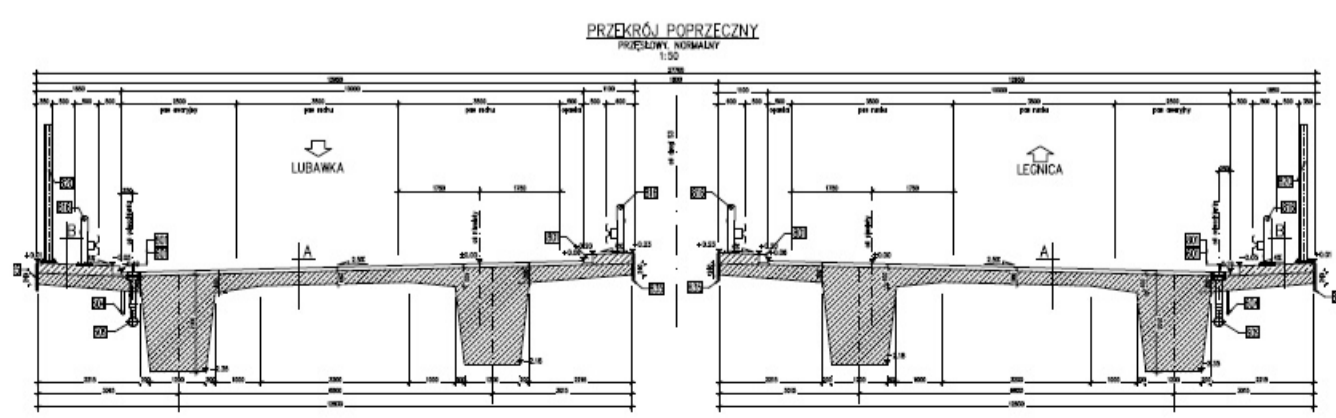
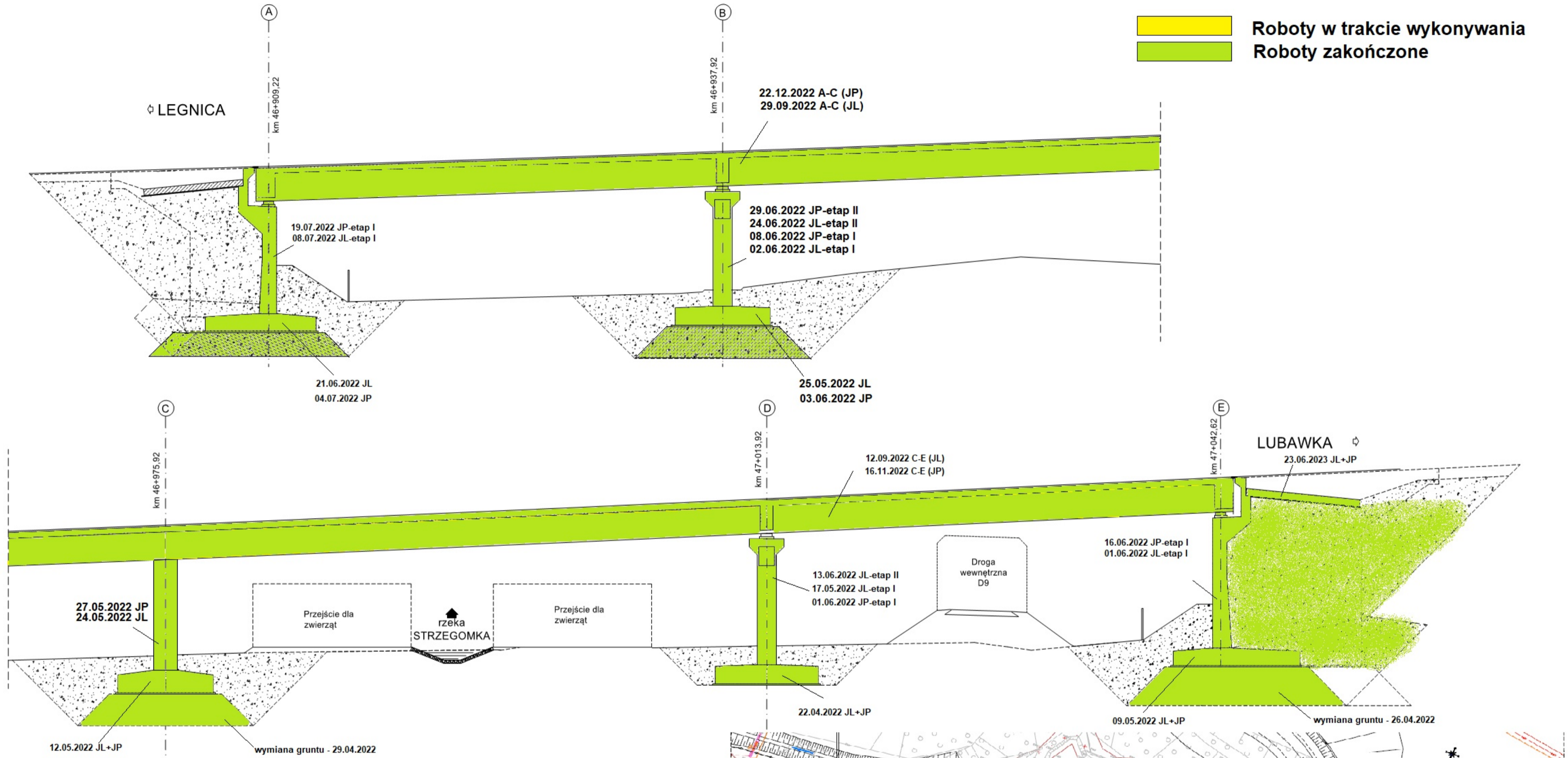


WS-30

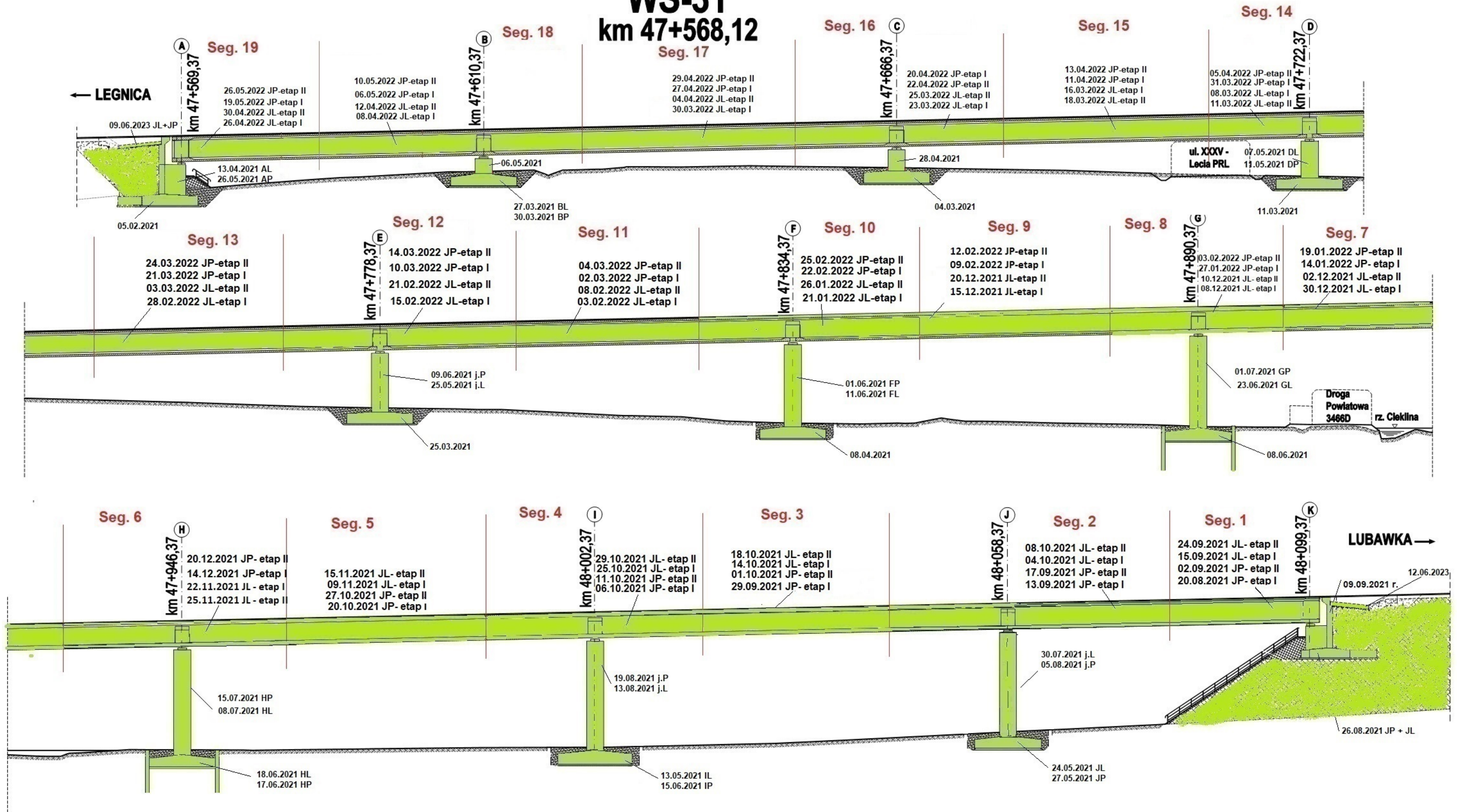
km 46+908.42

Legenda: **Stan na dzień 02.07.2023 r.**

- Roboty w trakcie wykonywania
- Roboty zakończone

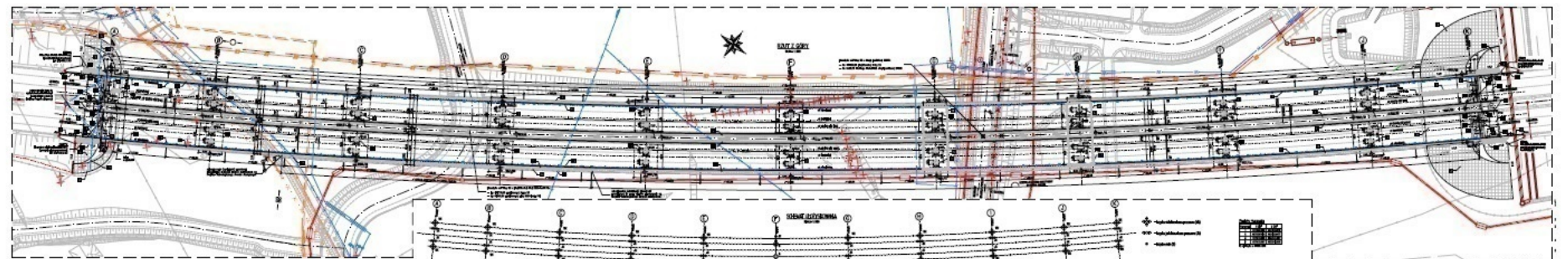
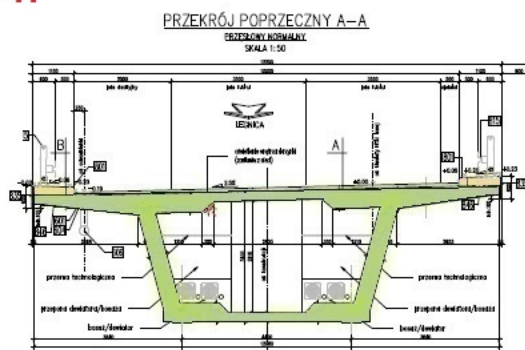


WS-31 km 47+568,12



Legenda: Stan na dzień 02.07.2023 r.

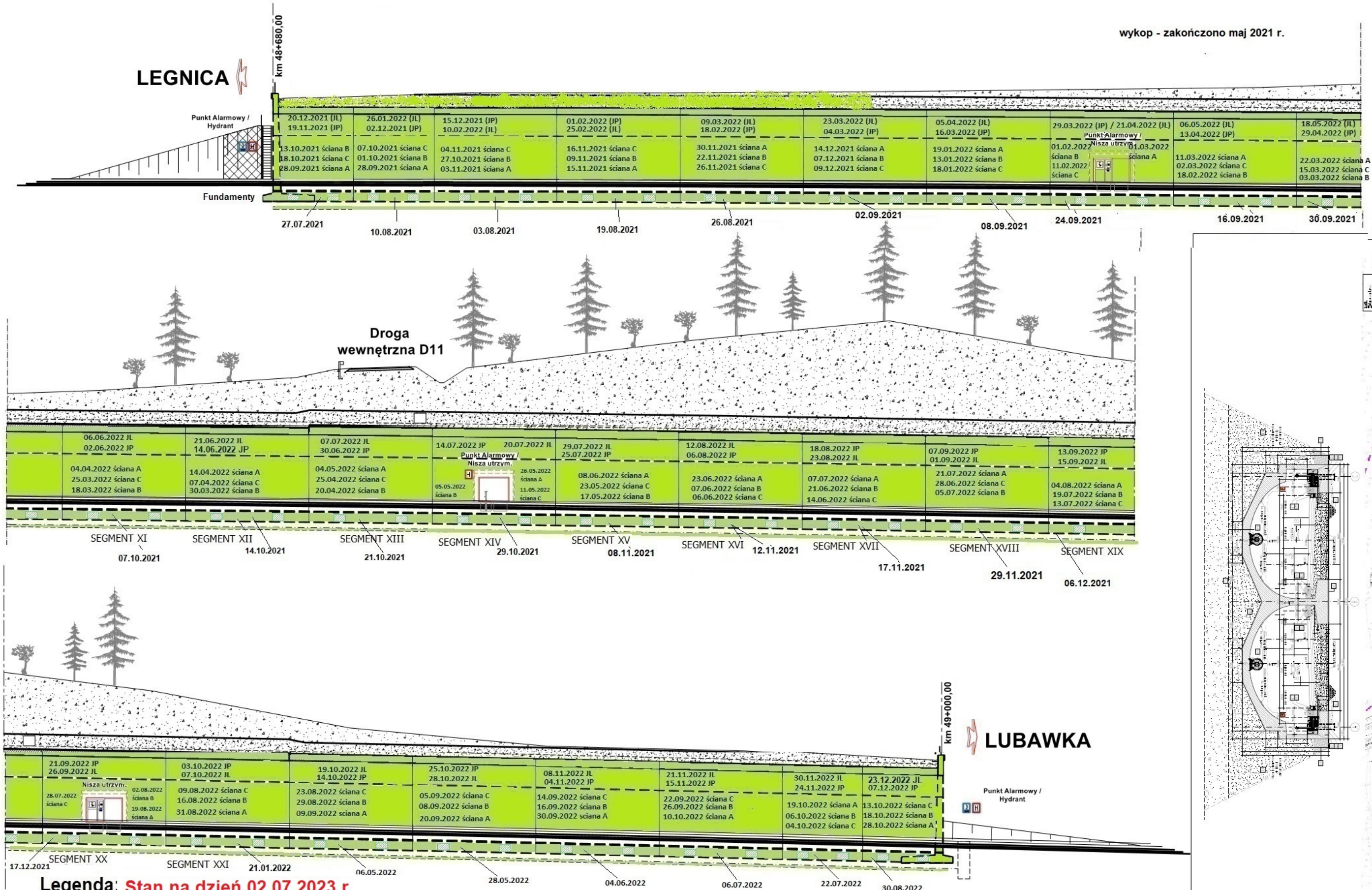
- Roboty w trakcie
- Roboty zakończone



TUNEL TS-32

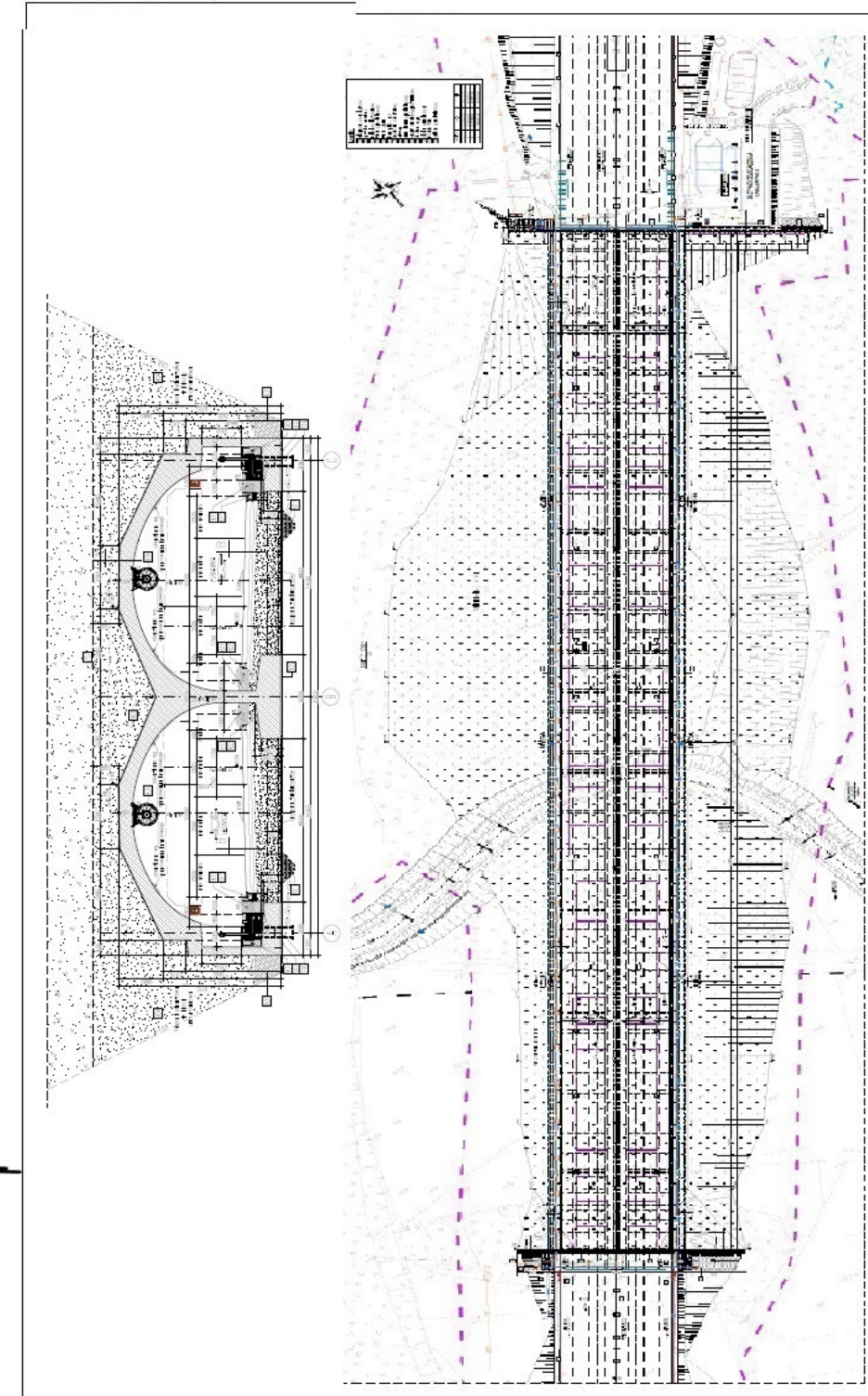
km 48+680,00 - 49+000,00

wykop - zakończono maj 2021 r.



Legenda: Stan na dzień 02.07.2023 r.

- Roboty w trakcie wykonywania
- Roboty zakończone

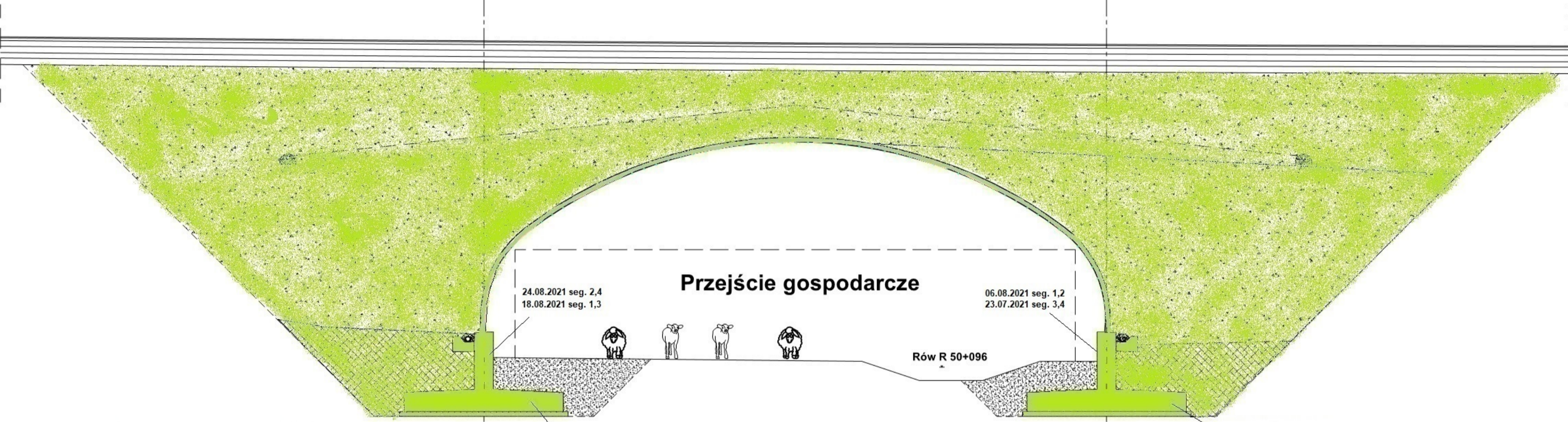


PG 10.1

km 50+097,00

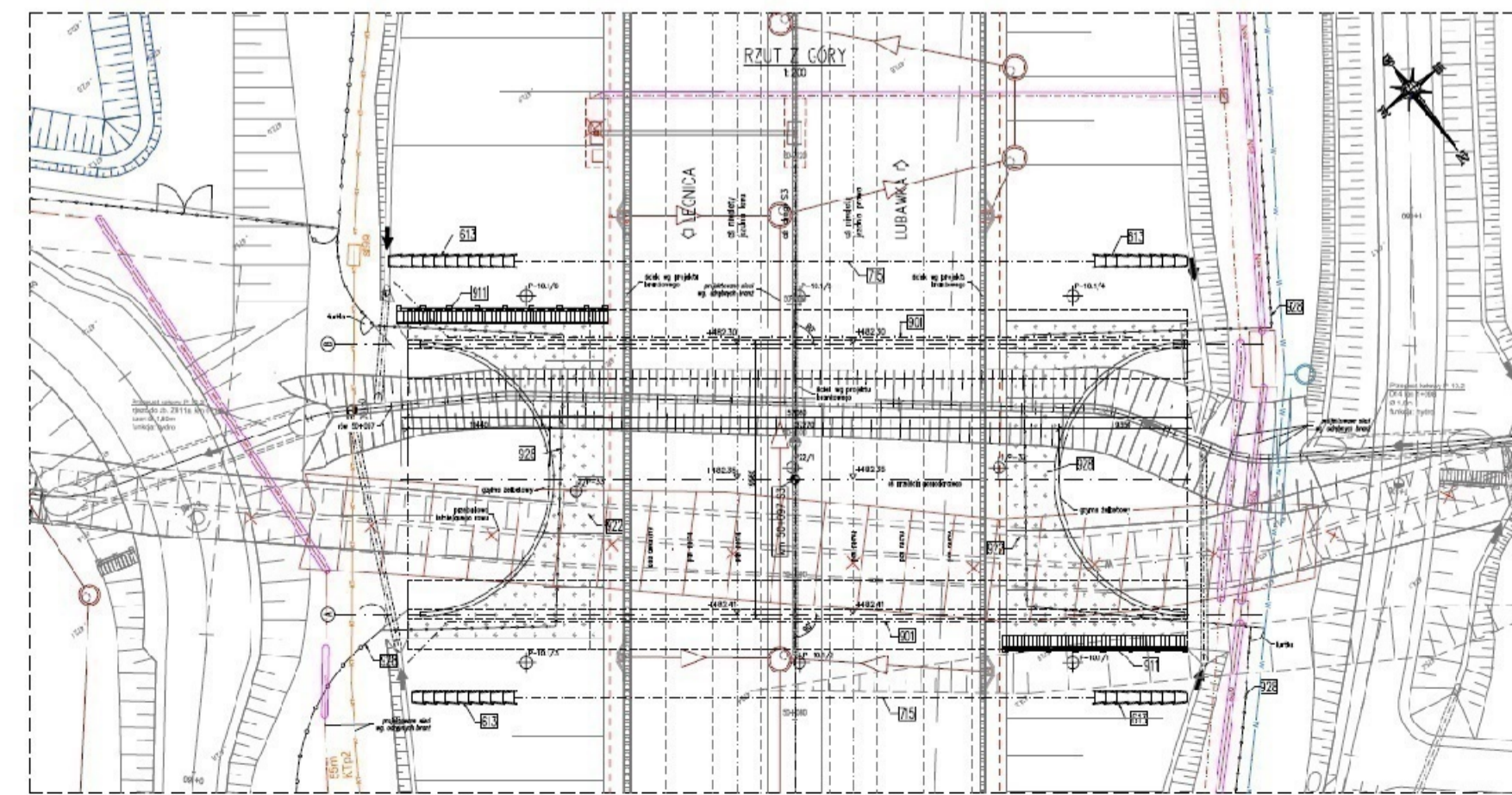
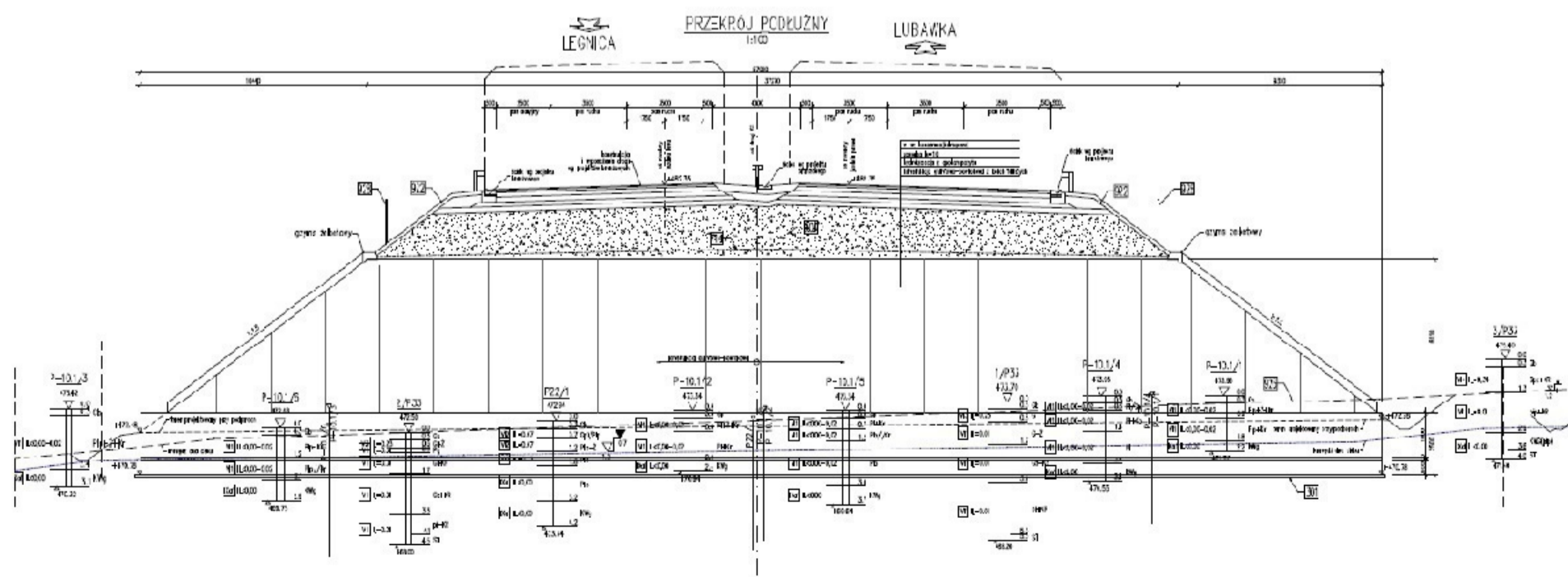
← LEGNICA

LUBAWKA →

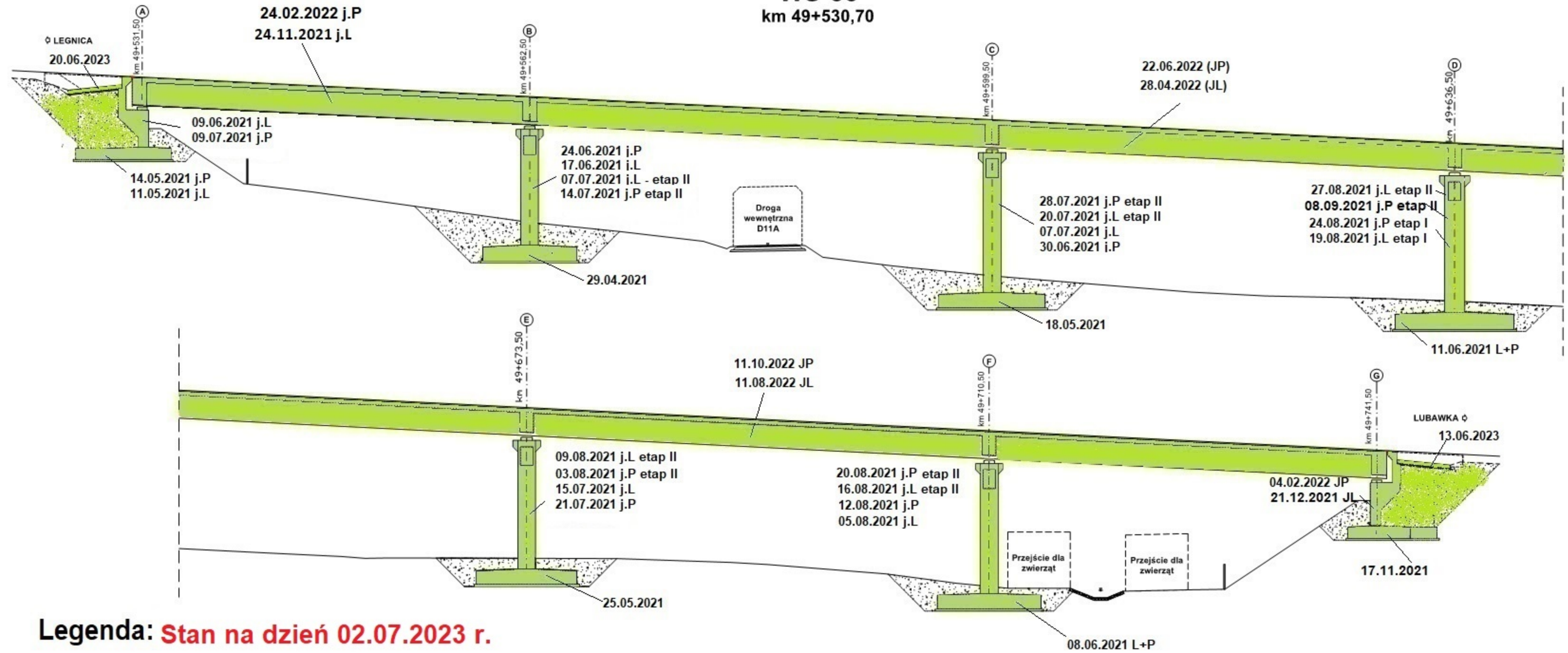


Legenda: Stan na dzień 02.07.2023 r.

- Roboty w trakcie wykonywania
- Roboty zakończone

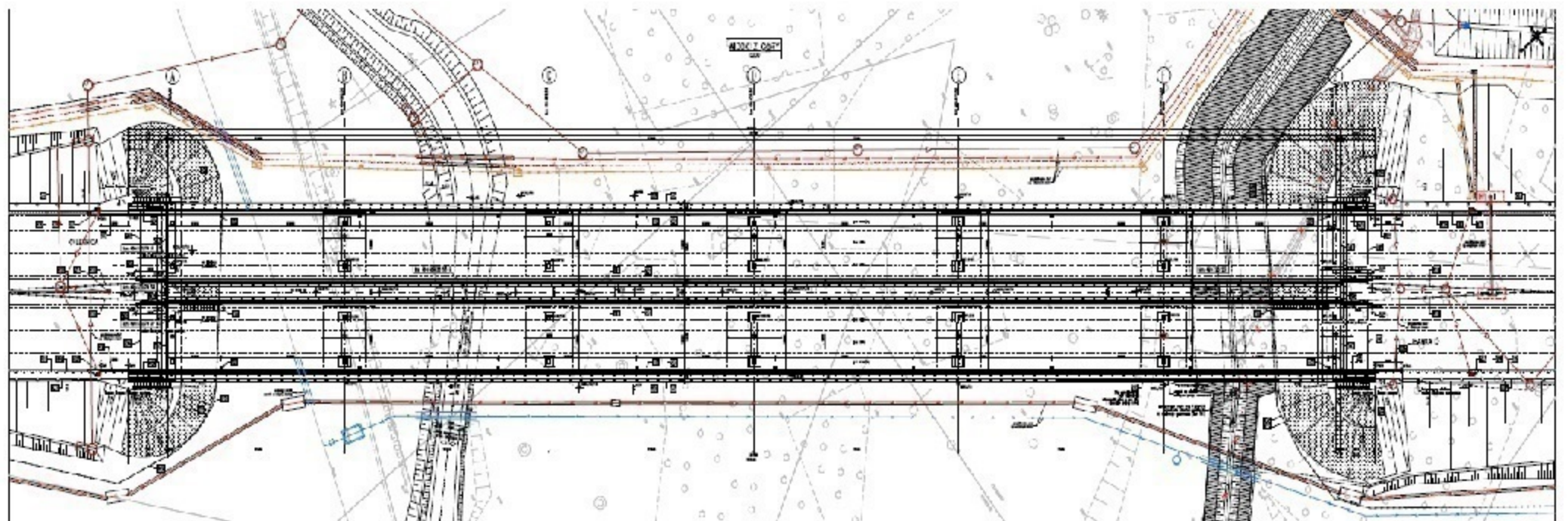
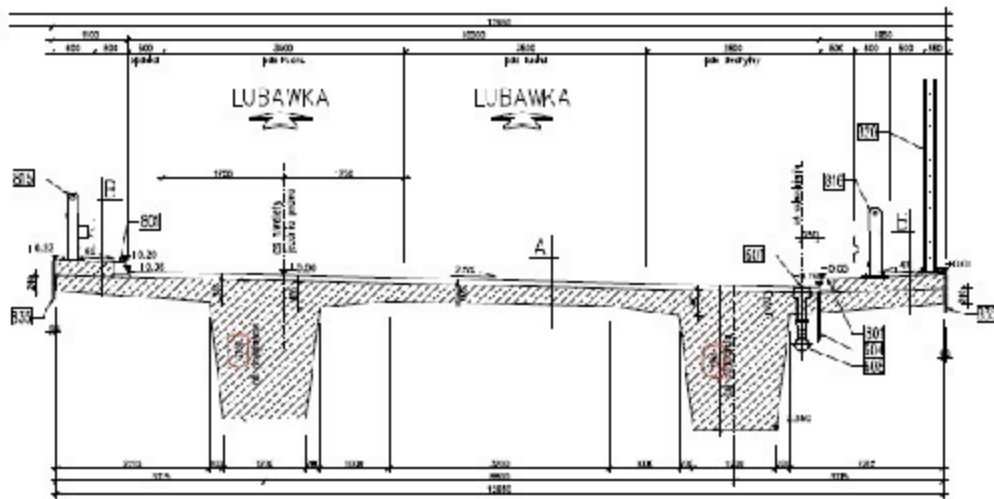


WS-33
km 49+530,70



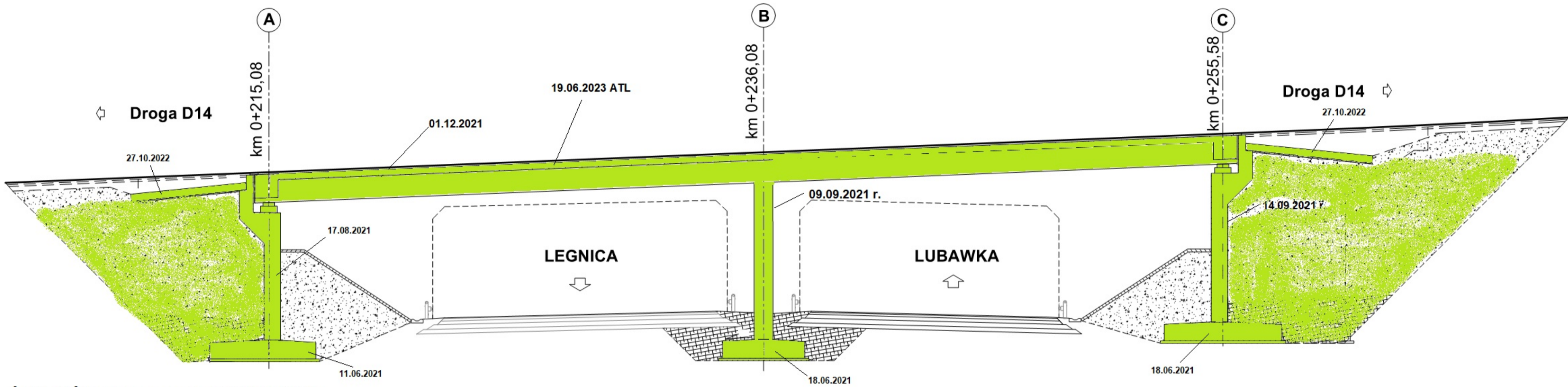
Legenda: Stan na dzień 02.07.2023 r.

- Roboty w trakcie wykonywania
- Roboty zakończone



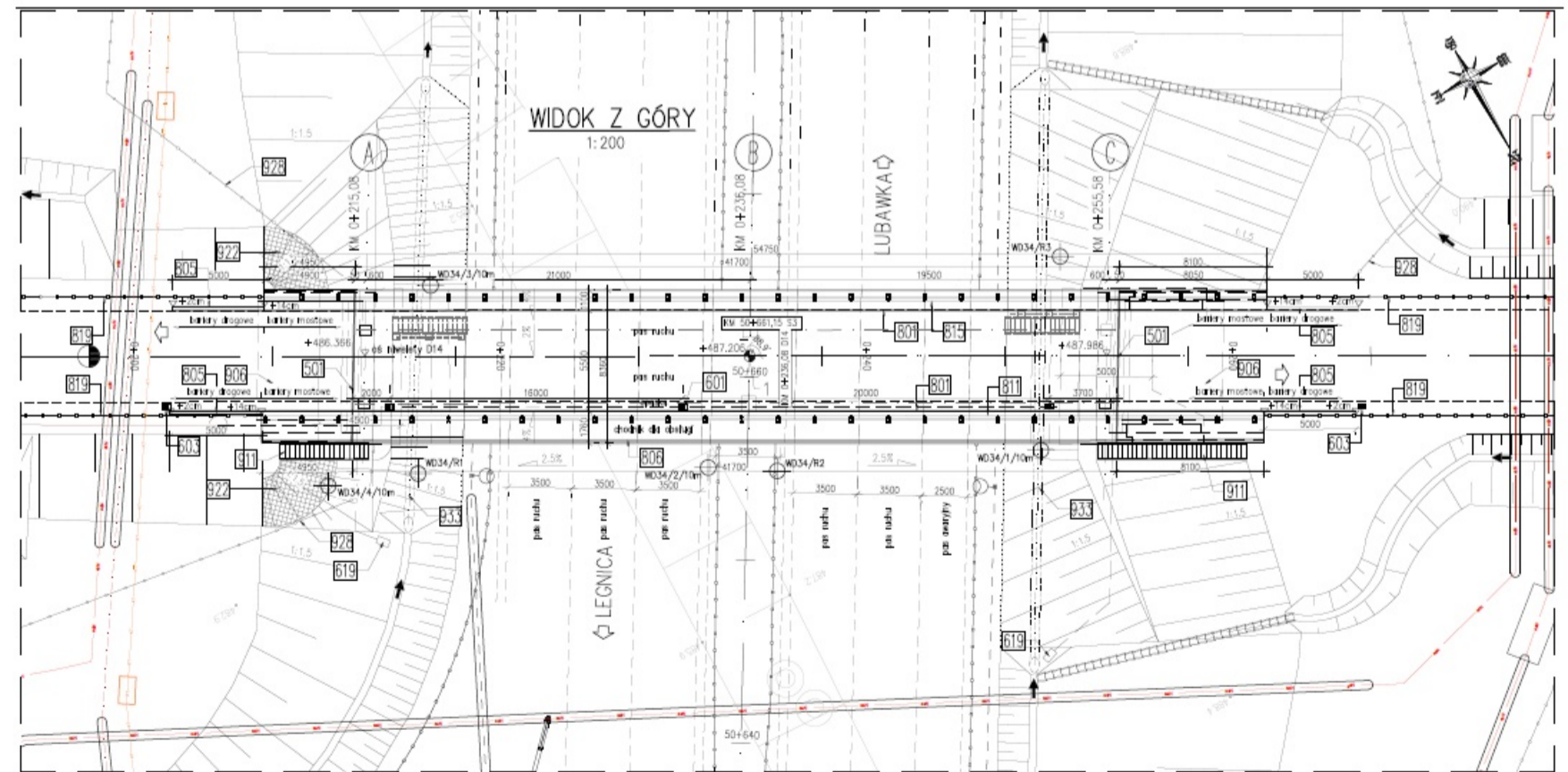
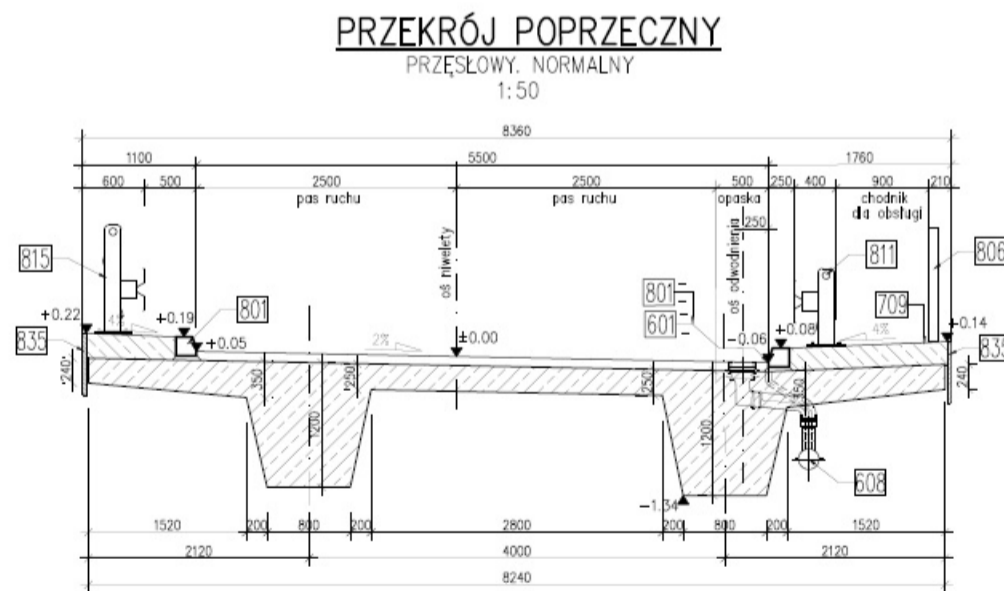
WD-34

km 50+661,15



Legenda: Stan na dzień 02.07.2023 r.

- Roboty w trakcie wykonywania
- Roboty zakończone



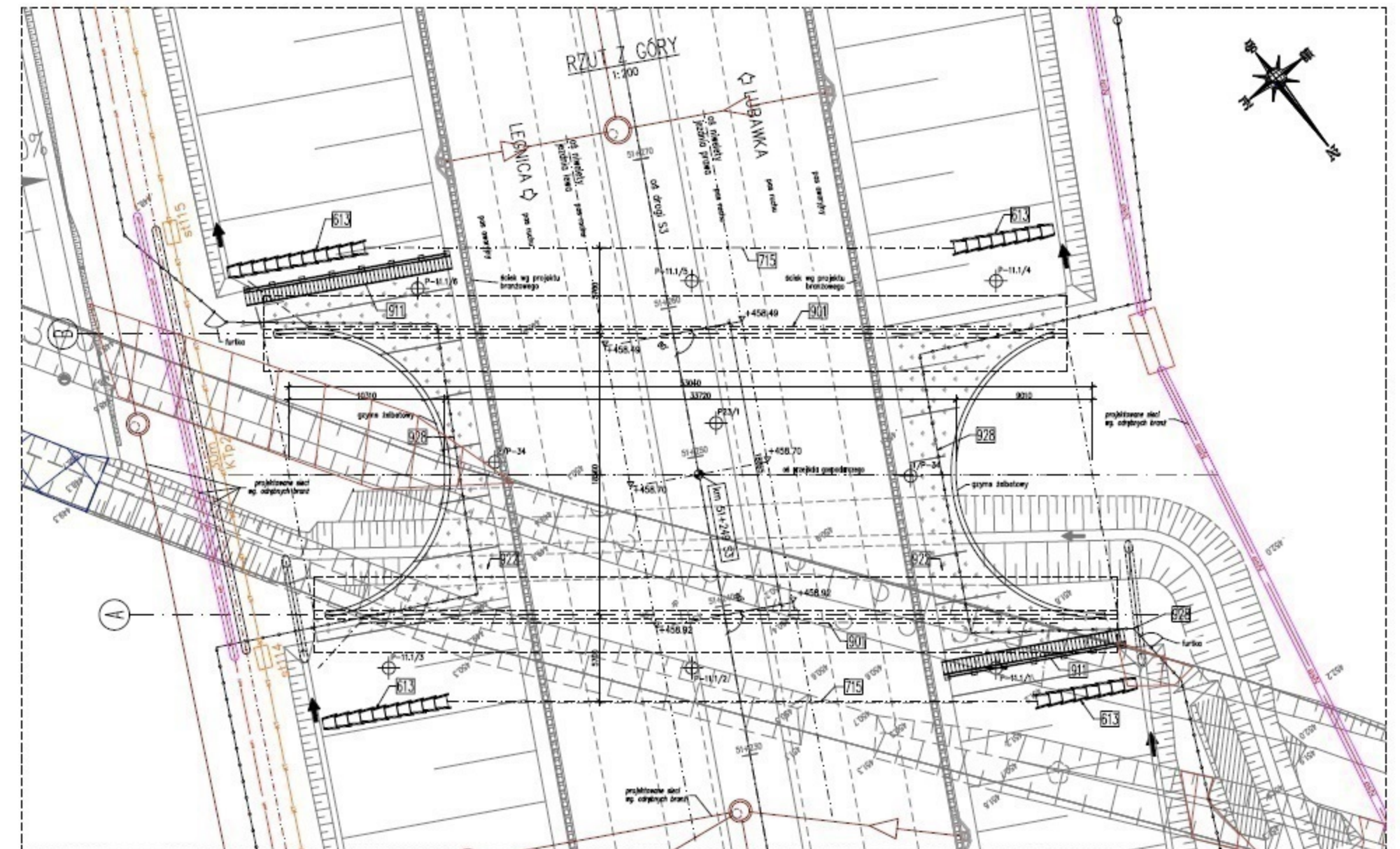
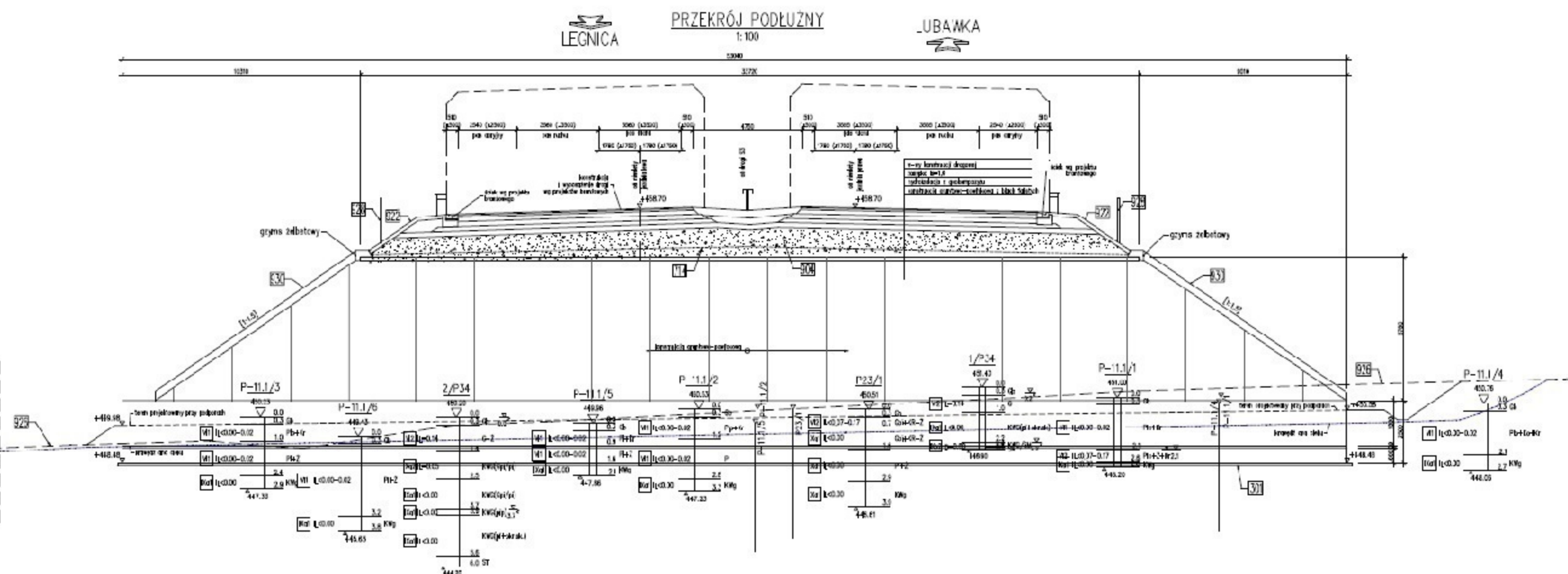
PG 11.1

km 51+249,00

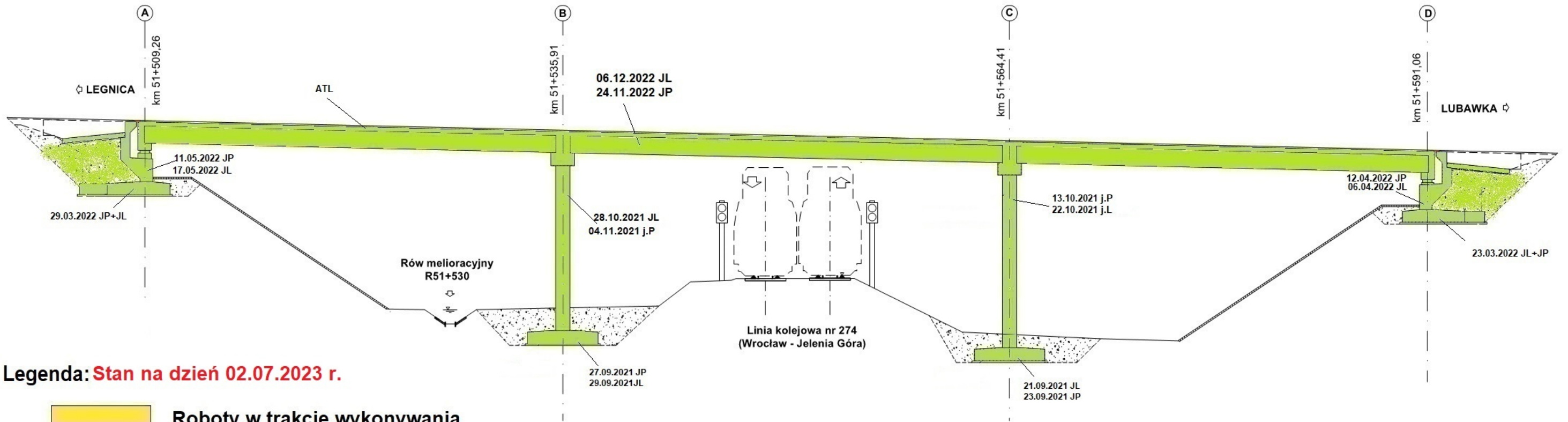


Legenda: Stan na dzień 02.07.2023 r.

- Roboty w trakcie wykonywania
- Roboty zakończone

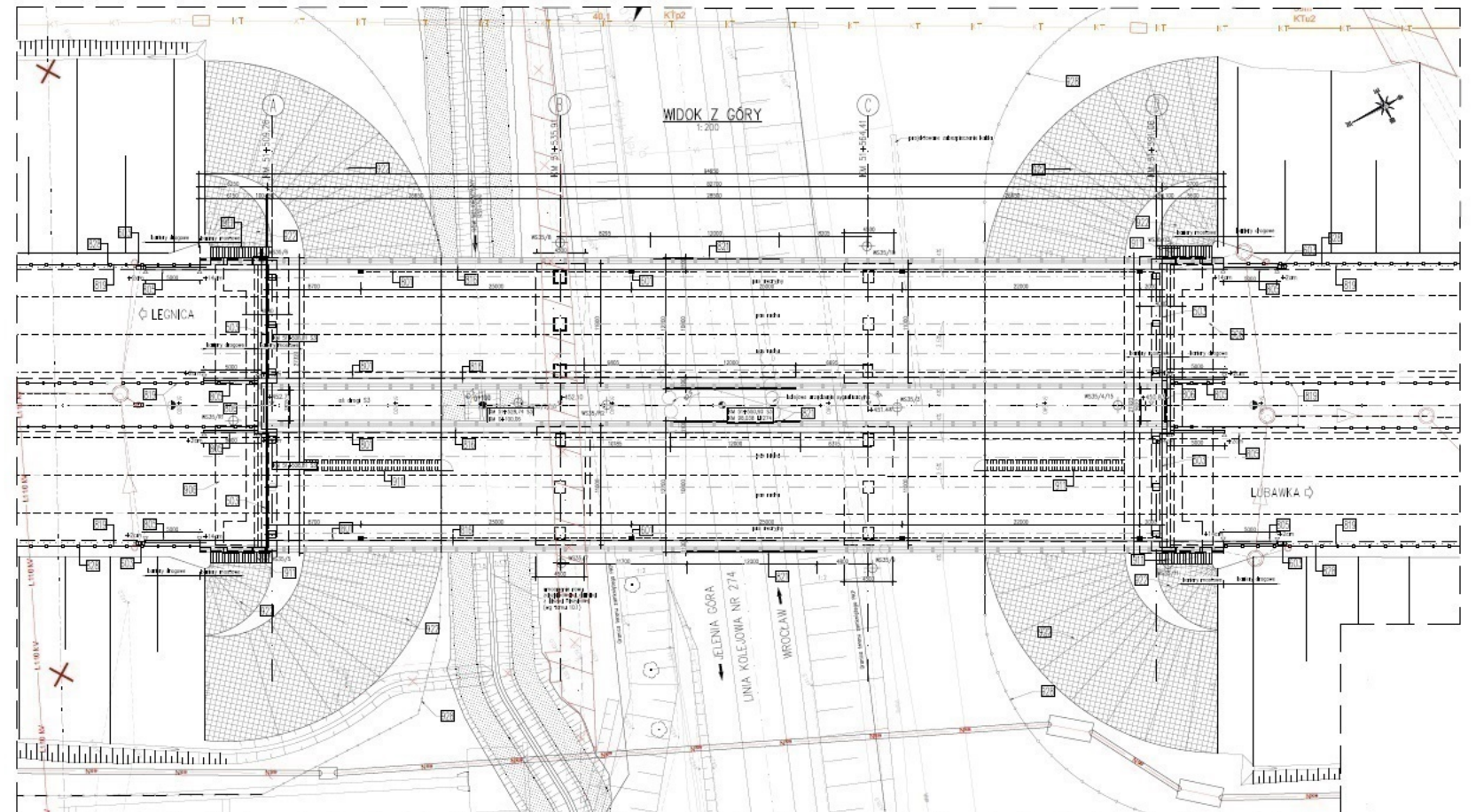
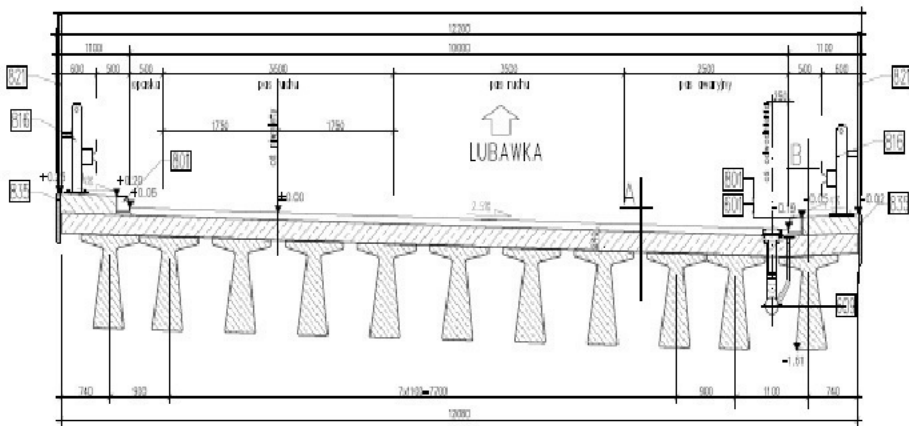


WS-35 km 51+508,81



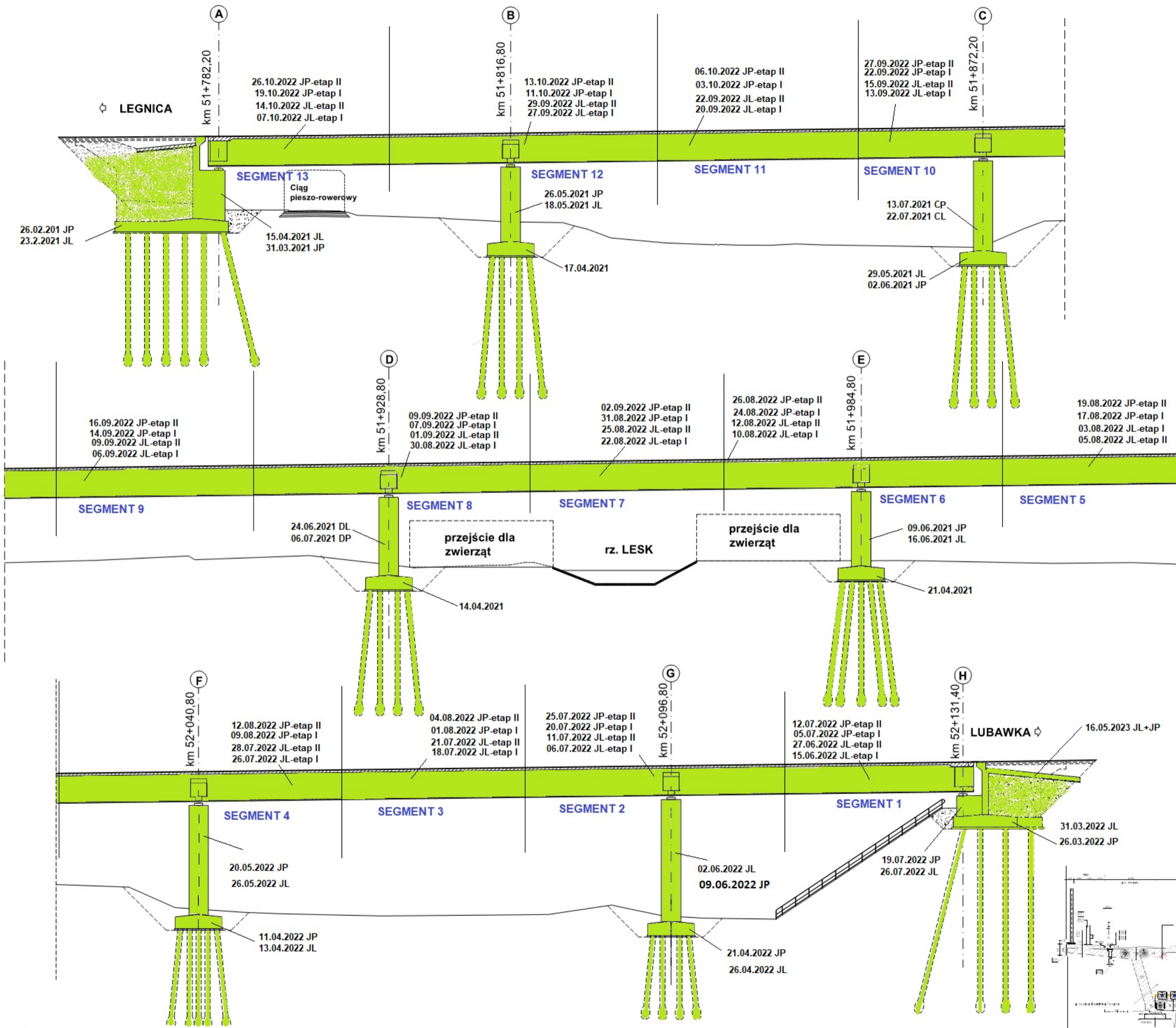
Legenda: Stan na dzień 02.07.2023 r.

- Roboty w trakcie wykonywania
- Roboty zakończone



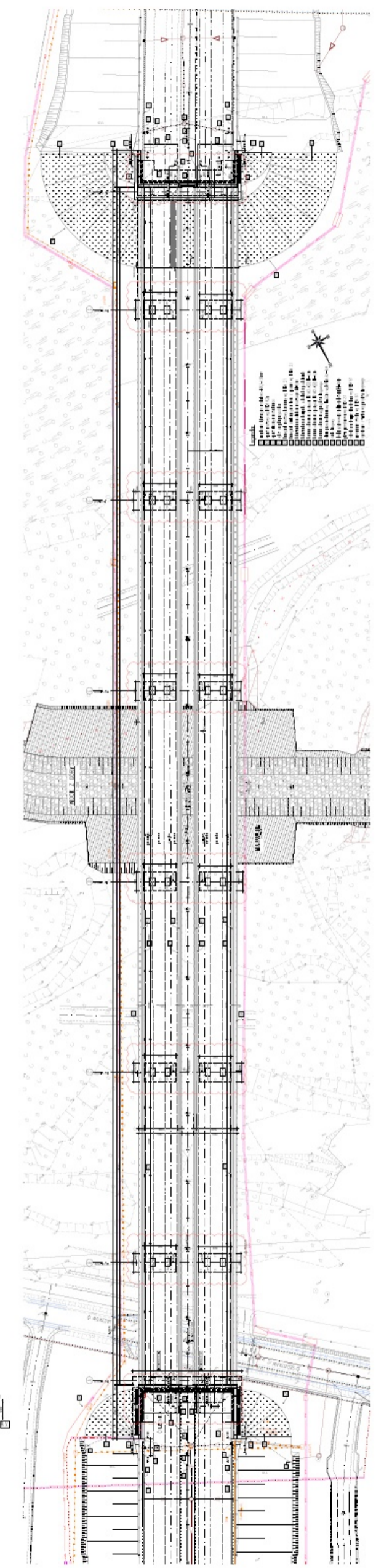
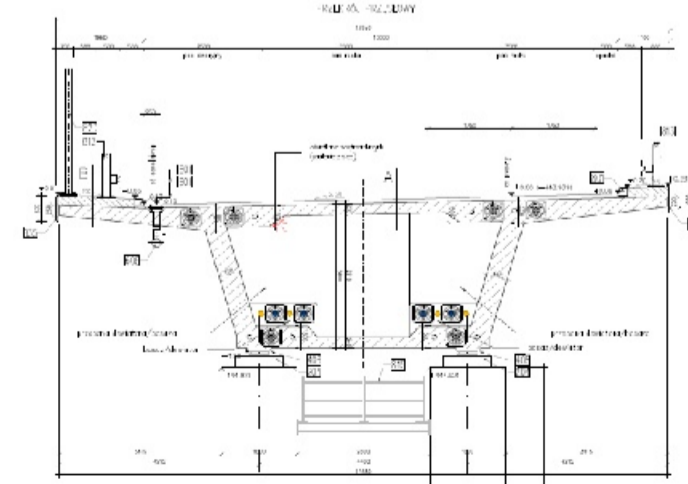
WS-36

km 51+780,95



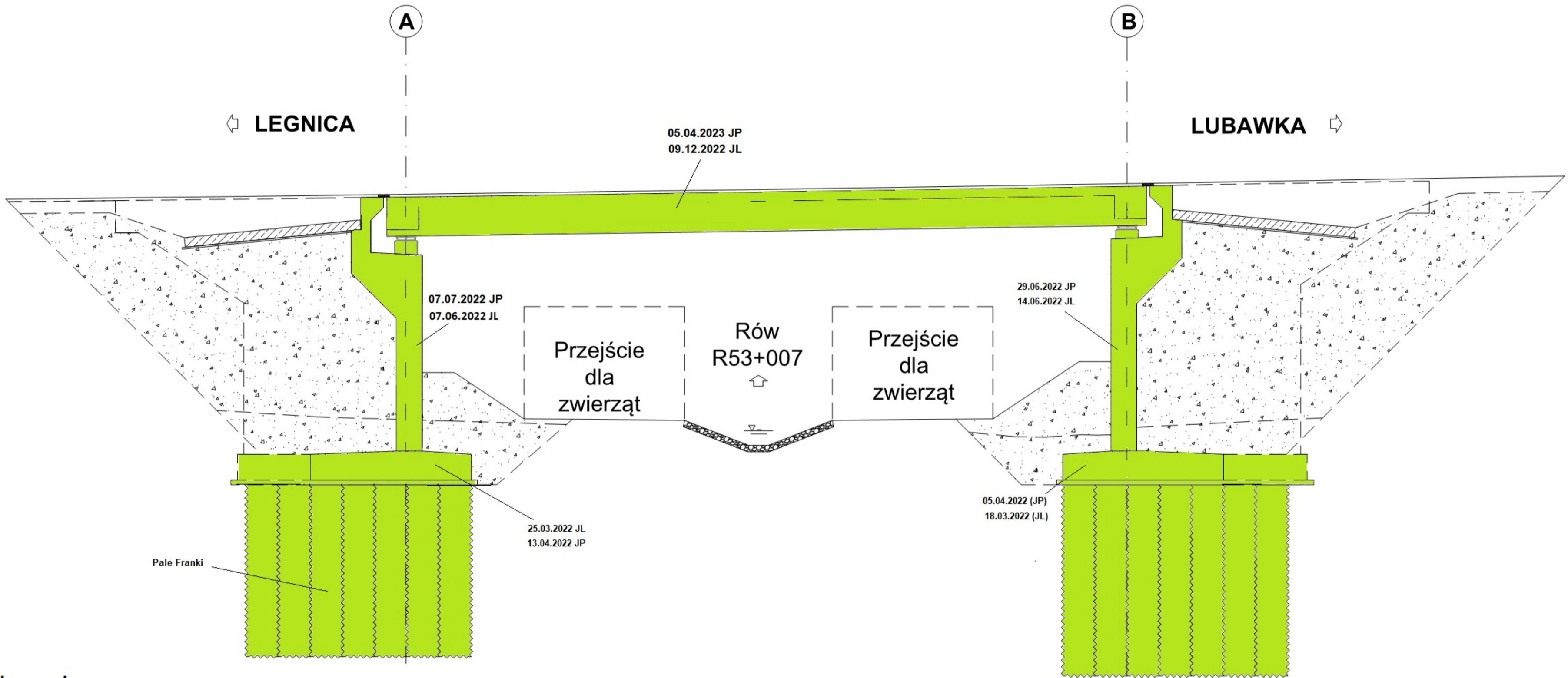
Legenda: Stan na dzień 02.07.2023 r.

- Roboty w trakcie wykonywania
- Roboty zakończone



WS-37

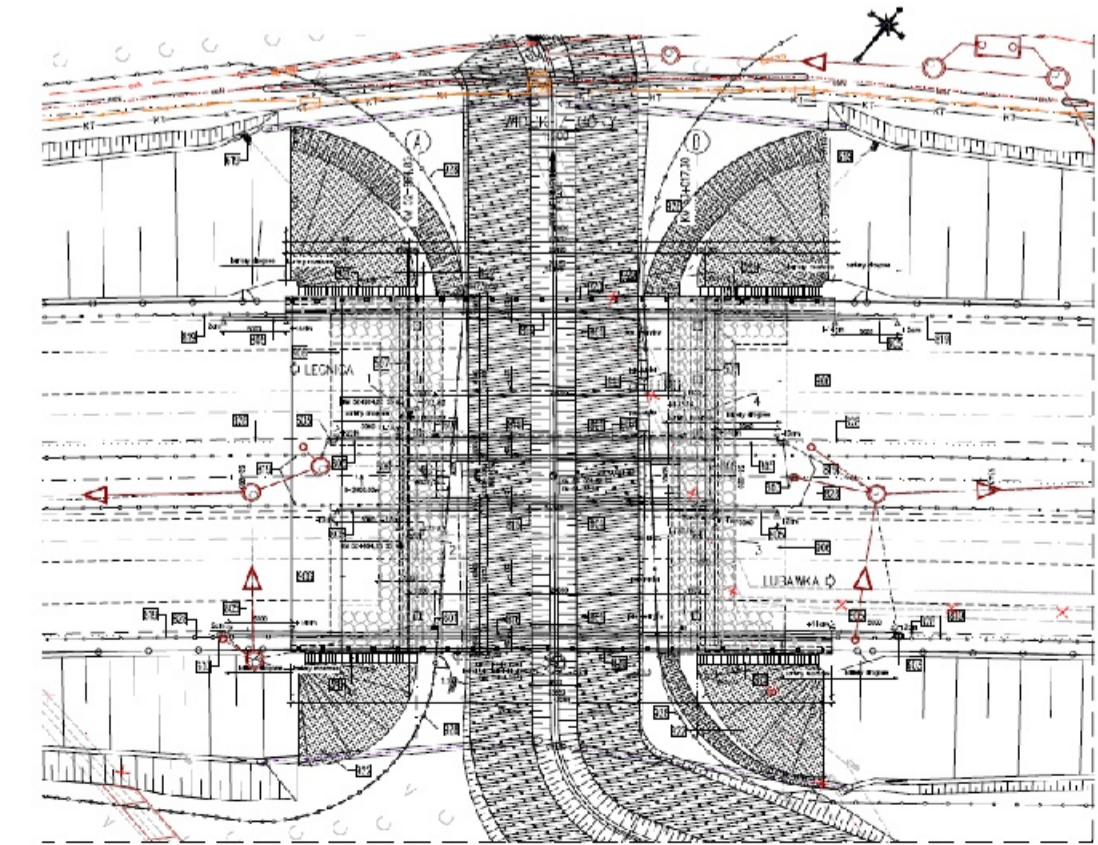
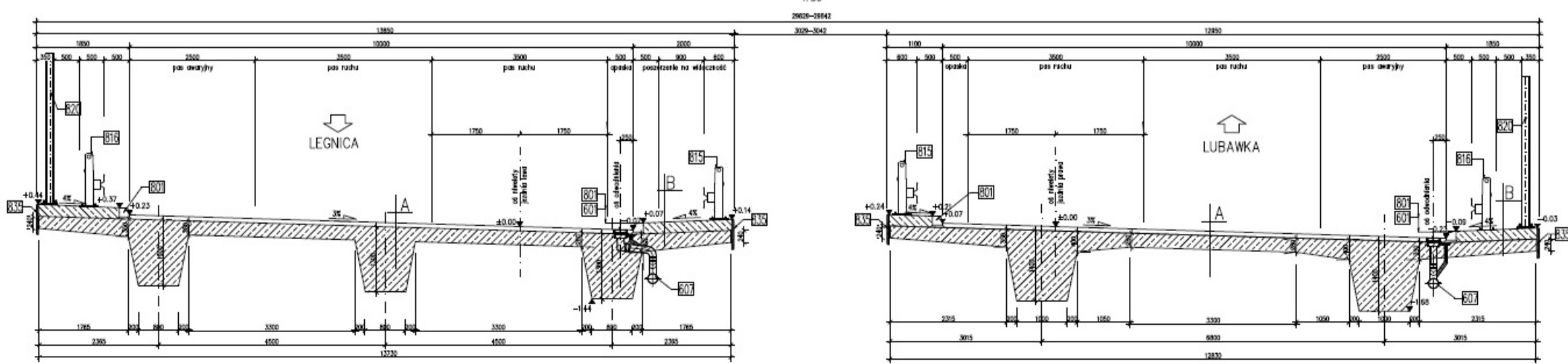
km 52+994,25



Legenda: Stan na dzień 02.07.2023 r.

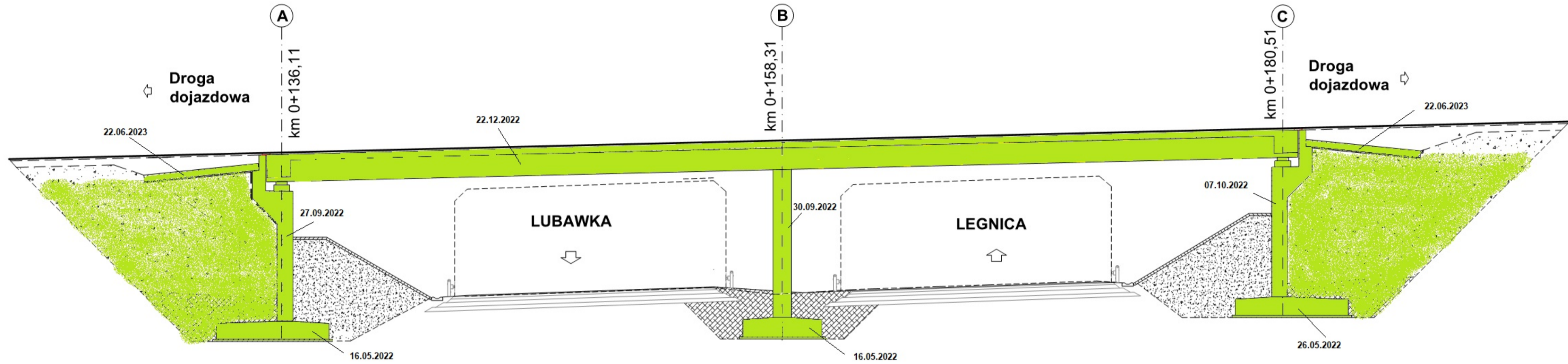
- Roboty w trakcie wykonywania
- Roboty zakończone

PRZEKRÓJ POPRZECZNY
PRZEŚLONY, NORMALNY
1:50



WD-38

km 53+798,79



Legenda: Stan na dzień 02.07.2023 r.

- Roboty w trakcie wykonywania
- Roboty zakończone

PRZEKRÓJ POPRZECZNY
PRZESŁOWY, NORMALNY
1:30

