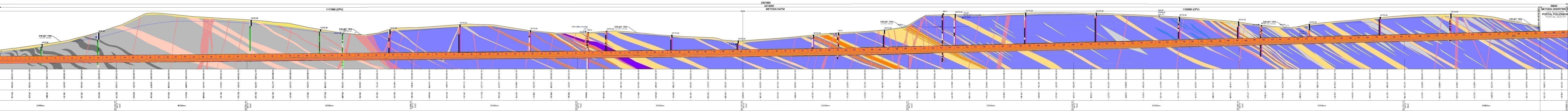


Zaawansowanie: Obudowa ostateczna

Legenda:					
Stan na dzień 18.06.2023 r.					
	element	CAC	TS-26	całość	
<div><div></div><div>Obudowa Wylęgna</div></div> <div><div></div><div>Obudowa Ostesteczna</div></div> <div><div></div><div>nitka Wschodnia</div></div>	E-W			420,76 [m]	
	Photo	87,5 [m]	2214,38 [m]	2301,88 [m]	
	Węz. 1	87,50 [m]	2214,38 [m]	2301,88 [m]	
	Węz. 2	87,50 [m]	2214,38 [m]	2301,88 [m]	
	Węz. 3	87,50 [m]	2214,38 [m]	2301,88 [m]	
	Węz. 4	87,50 [m]	2214,38 [m]	2301,88 [m]	
<div><div></div><div>Obudowa Wylęgna</div></div> <div><div></div><div>Obudowa Ostesteczna</div></div> <div><div></div><div>nitka Zachodnia</div></div>	Przegląd	137,50 [m]	4416,26 [m]	4553,76 [m]	
	Photo	125,00 [m]	4048,26 [m]	4173,26 [m]	
	Węz. 1	50,00 [m]	1625,00 [m]	1675,00 [m]	
	Węz. 2	0,00 [m]	0,00 [m]	0,00 [m]	
	Węz. 3	62,00 [m]	2210,20 [m]	2272,20 [m]	
	Przegląd	62,00 [m]	2210,20 [m]	2272,20 [m]	
<div><div></div><div>Obudowa Wylęgna</div></div> <div><div></div><div>Obudowa Ostesteczna</div></div> <div><div></div><div>nitka Zachodnia</div></div>	Photo	62,00 [m]	2210,20 [m]	2272,20 [m]	
	Węz. 1	111,50 [m]	3630,70 [m]	3742,20 [m]	
	Węz. 2	88,50 [m]	2747,87 [m]	2836,37 [m]	
	Przegląd	49,50 [m]	1679,64 [m]	1729,14 [m]	
	Photo	0,00 [m]	0,00 [m]	0,00 [m]	
	Węz. 3	0,00 [m]	0,00 [m]	0,00 [m]	
Nowa Wschodnia - zakończenie szlaku: 186					
Nowa Zachodnia - zakończenie szlaku: 584					
Załącznik: 36970-10					

← NAWA LEWA (JL) = NAWA WSCHODNIA (JL)
KIERUNEK LEGNICA

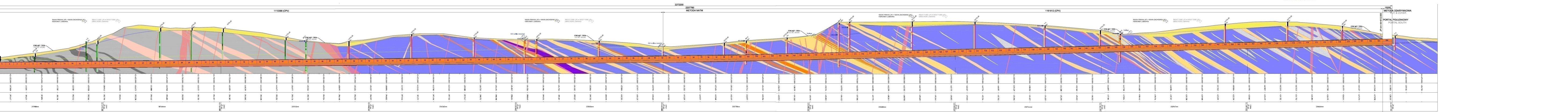


TS-26
NAWA LEWA

NITKA WSCHODNIA "E"

TS-26
NAWA PRA

NITKA ZACHODNIA "W"

NAWA PRAWA (JP) = NAWA ZACHODNIA (JP)
KIERUNEK LUBAWKA

CPP1

CPP2

CPP3

CPP4

CPV1

CPP5

CPP6

CPP7

PP8

CPP1.1 - 5.0 [m] - 100%
 CPP1.2 - 5.0 [m] - 100%
 CPP1.3 - 4.345 [m] - 100%
 CPP1.4 - 5.0 [m] - 100%
 CPP1.5 - 1.331 [m] - 100%
 Lagema: 20,676 [m] - 100%

Igniter CPP2-01 - 5.0 [m] - 90%
 Igniter CPP2-02 - 5.0 [m] - 90%
 Igniter CPP2-03 - 4.345 [m] - 90%
 Igniter CPP2-04 - 5.0 [m] - 100%
 Igniter CPP2-05 - 1.331 [m] - 100%
 Igniter CPP1-20.678 [m] - 100%

ment CP93-01: 5,0 [m] - 100%
ment CP93-02: 5,0 [m] - 100%
ment CP93-03: 4,345 [m] - 100%
ment CP93-04: 5,0 [m] - 100%
ment CP93-05: 1,620 [m] - 100%
nia CP93: 20,971 [m] - 100%

Content CP94-01 = 5,0 [m] - 100%
 Content CP94-02 = 5,0 [m] - 100%
 Content CP94-03 = 4,347 [m] - 100%
 Content CP94-04 = 5,0 [m] - 100%
 Content CP94-05 = 4,845 [m] - 100%
 Total CP94 = 24,192 [m] - 100%

ent CPV1-01 = 6,0 [m]
 ent CPV1-02 = 2,650 [m]
 ent CPV1-03 = 3,715 [m]
 ent CPV1-04 = 6,0 [m]
 ent CPV1-05 = 2,650 [m]
 ent CPV1-06 = 6,0 [m]
 e CPP1: **27,015 [m]**

CP95-01 = 5.0 [m] 100%
 CP95-02 = 5.0 [m] 100%
 CP95-03 = 4.347 [m] 100%
 CP95-04 = 5.0 [m] 100%
 CP95-05 = 5.0 [m] 100%
 CP95-06 = 3.746 [m] 100%
 CPD1 = 28.001 [m] 100%

PP6-01 - 5,0 [m] - 100%
 PP6-02 - 5,0 [m] - 100%
 PP6-03 - 4,346 [m] - 100%
 PP6-04 - 5,0 [m] - 100%
 PP6-05 - 5,0 [m] - 100%
 PP6-06 - 3,882 [m] - 100%
 P1: 28,228 [m] - 100%

P7-01 = 5,0 [n] - 100%
 P7-02 = 5,0 [n] - 100%
 P7-03 = 4,347 [m] - 100%
 P7-04 = 5,0 [m] - 100%
 P7-05 = 5,0 [n] - 100%
 P7-06 = 2,799 [m] - 100%
 t: 27,146 [m] - 100%

- 6,0 [n] - 100%
 - 2,650 [n] - 100%
 - 3,715 [n] - 100%
 - 6,0 [n] - 100%
 - 2,650 [n] - 100%
 - 6,0 [n] - 100%
 .005 [n] 100 %