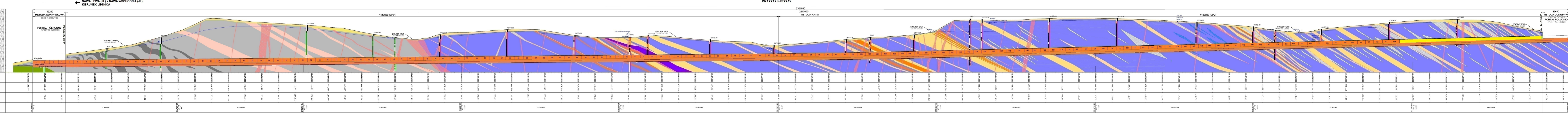
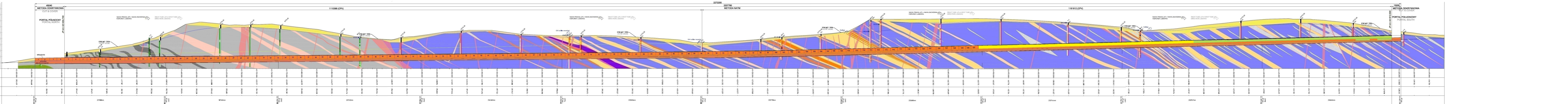


Legenda:			
Obudowa	element	C&C	TS-26
Wstępna	X	4420,76 [m]	4420,76 [m]
100%			
Obudowa			
Ostateczna	Przebieg	87,5 [m]	2214,38 [m]
100%			
Nitka Wschodnia	Przebieg	0,00 [m]	2201,88 [m]
26%			
50,00 [m]	1999,24 [m]	2049,24 [m]	95%
62,00 [m]	2216,20 [m]	2272,20 [m]	100%
100%			
Nitka Zachodnia	Przebieg	0,00 [m]	1877,84 [m]
33%			
49,50 [m]	1520,40 [m]	1569,60 [m]	69%
100%			
Wytyczne			
Nawa Wschodnia - zabetonowano sekcje:	158 / 158		
Nawa Zachodnia - zabetonowano sekcje:	427 / 158		
ŁĄCZNIKI:	291 / 38		
	79 [m]		



Legenda:			
Obudowa	element	C&C	TS-26
100%			
Obudowa			
Ostateczna	Przebieg	87,5 [m]	2214,38 [m]
100%			
Nitka Wschodnia	Przebieg	0,00 [m]	2201,88 [m]
26%			
50,00 [m]	1999,24 [m]	2049,24 [m]	95%
62,00 [m]	2216,20 [m]	2272,20 [m]	100%
100%			
Nitka Zachodnia	Przebieg	0,00 [m]	1877,84 [m]
33%			
49,50 [m]	1520,40 [m]	1569,60 [m]	69%
100%			
Wytyczne			
Nawa Wschodnia - zabetonowano sekcje:	158 / 158		
Nawa Zachodnia - zabetonowano sekcje:	427 / 158		
ŁĄCZNIKI:	291 / 38		
	79 [m]		



- CPP1**
 Segment CPP1-01 - 5,0 [m] - 100%
 Segment CPP1-02 - 5,0 [m] - 100%
 Segment CPP1-03 - 5,0 [m] - 100%
 Segment CPP1-04 - 5,0 [m] - 100%
 Segment CPP1-05 - 5,0 [m] - 100%
 Łącznie CPP1: 25,0 [m] 100%
- CPP2**
 Segment CPP2-01 - 5,0 [m] - 100%
 Segment CPP2-02 - 5,0 [m] - 100%
 Segment CPP2-03 - 5,0 [m] - 100%
 Segment CPP2-04 - 5,0 [m] - 100%
 Segment CPP2-05 - 5,0 [m] - 100%
 Łącznie CPP2: 25,0 [m] 100%
- CPP3**
 Segment CPP3-01 - 5,0 [m] - 100%
 Segment CPP3-02 - 5,0 [m] - 100%
 Segment CPP3-03 - 5,0 [m] - 100%
 Segment CPP3-04 - 5,0 [m] - 100%
 Segment CPP3-05 - 5,0 [m] - 100%
 Łącznie CPP3: 25,0 [m] 100%
- CPP4**
 Segment CPP4-01 - 5,0 [m] - 100%
 Segment CPP4-02 - 5,0 [m] - 100%
 Segment CPP4-03 - 5,0 [m] - 100%
 Segment CPP4-04 - 5,0 [m] - 100%
 Segment CPP4-05 - 5,0 [m] - 100%
 Łącznie CPP4: 25,0 [m] 100%
- CPV1**
 Segment CPV1-01 - 6,0 [m] - 100%
 Segment CPV1-02 - 3,75 [m] - 100%
 Segment CPV1-03 - 3,75 [m] - 100%
 Segment CPV1-04 - 6,0 [m] - 100%
 Segment CPV1-05 - 2,5 [m] - 100%
 Segment CPV1-06 - 6,0 [m] - 100%
 Łącznie CPV1: 27,0 [m] 100%
- CPP5**
 Segment CPP5-01 - 5,0 [m] - 100%
 Segment CPP5-02 - 5,0 [m] - 100%
 Segment CPP5-03 - 5,0 [m] - 100%
 Segment CPP5-04 - 5,0 [m] - 100%
 Segment CPP5-05 - 5,0 [m] - 100%
 Łącznie CPP5: 25,0 [m] 100%
- CPP6**
 Segment CPP6-01 - 5,0 [m] - 100%
 Segment CPP6-02 - 5,0 [m] - 100%
 Segment CPP6-03 - 5,0 [m] - 100%
 Segment CPP6-04 - 5,0 [m] - 100%
 Segment CPP6-05 - 5,0 [m] - 100%
 Łącznie CPP6: 25,0 [m] 100%
- CPP7**
 Segment CPP7-01 - 5,0 [m] - 100%
 Segment CPP7-02 - 5,0 [m] - 100%
 Segment CPP7-03 - 5,0 [m] - 100%
 Segment CPP7-04 - 5,0 [m] - 100%
 Segment CPP7-05 - 5,0 [m] - 100%
 Łącznie CPP7: 25,0 [m] 100%
- CPP8**
 Segment CPP8-01 - 5,0 [m] - 100%
 Segment CPP8-02 - 5,0 [m] - 100%
 Segment CPP8-03 - 5,0 [m] - 100%
 Segment CPP8-04 - 5,0 [m] - 100%
 Segment CPP8-05 - 5,0 [m] - 100%
 Łącznie CPP8: 25,0 [m] 100%