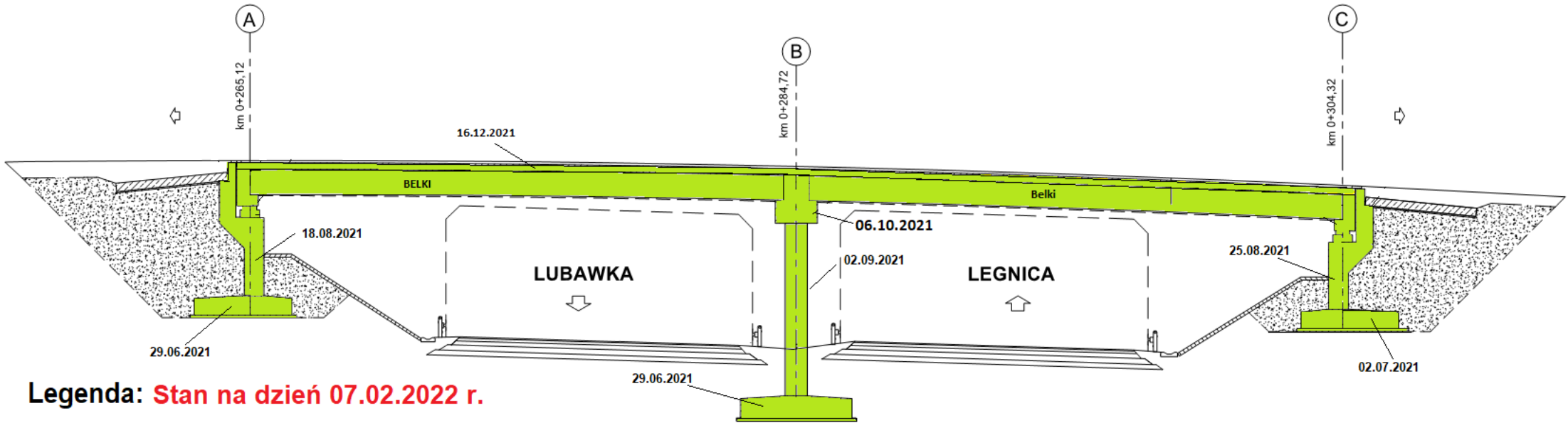


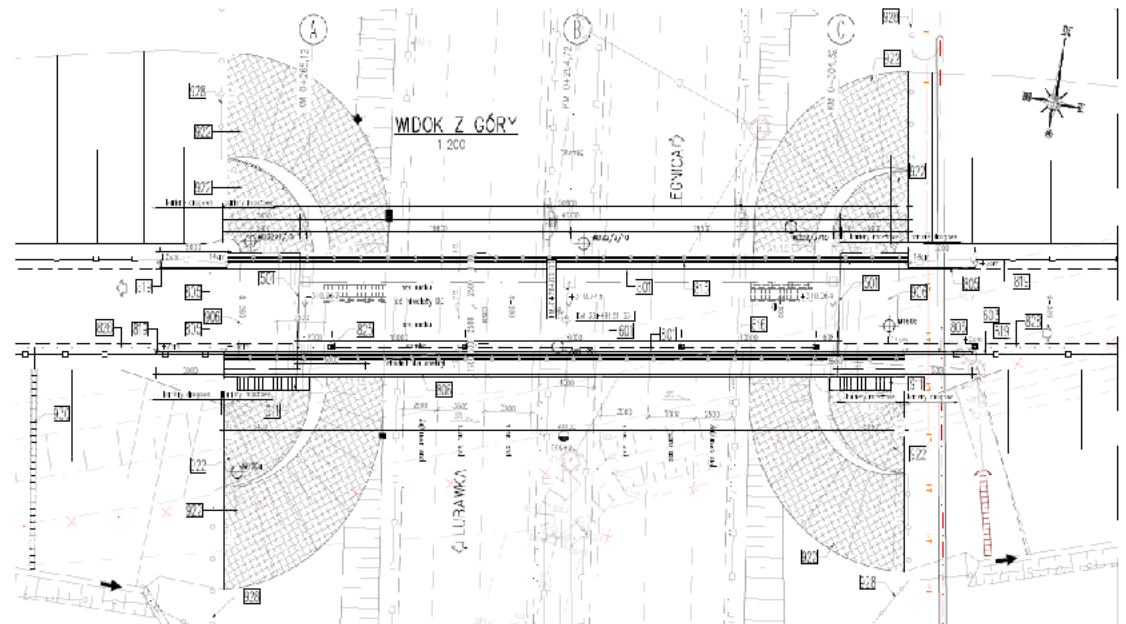
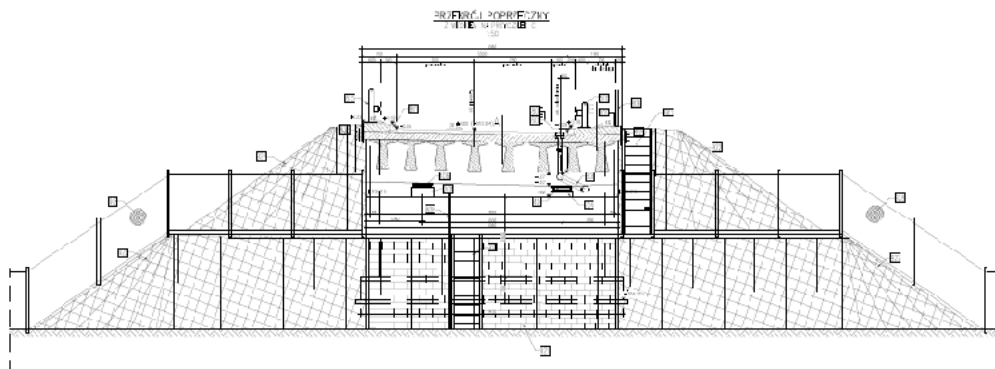
# WD-22

## km 38+491,21



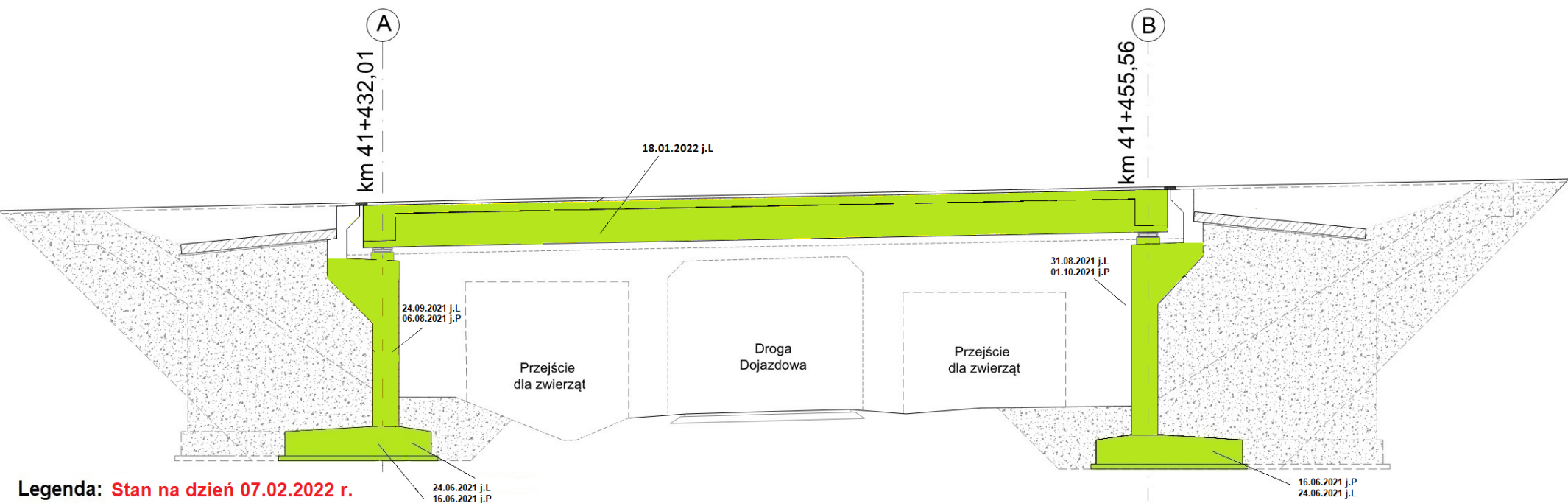
Legenda: Stan na dzień 07.02.2022 r.

- Roboty w trakcie wykonywania
- Roboty zakończone



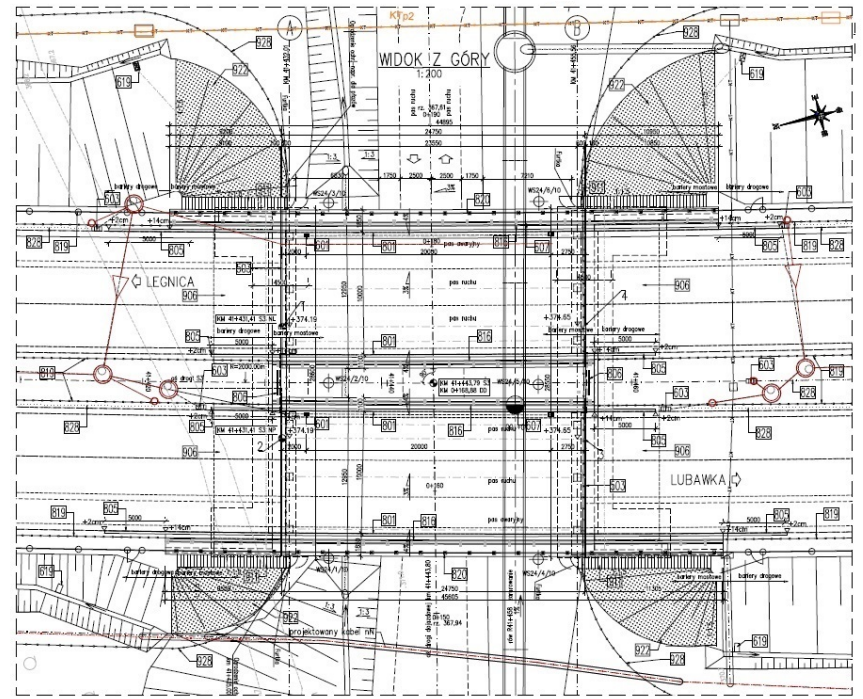
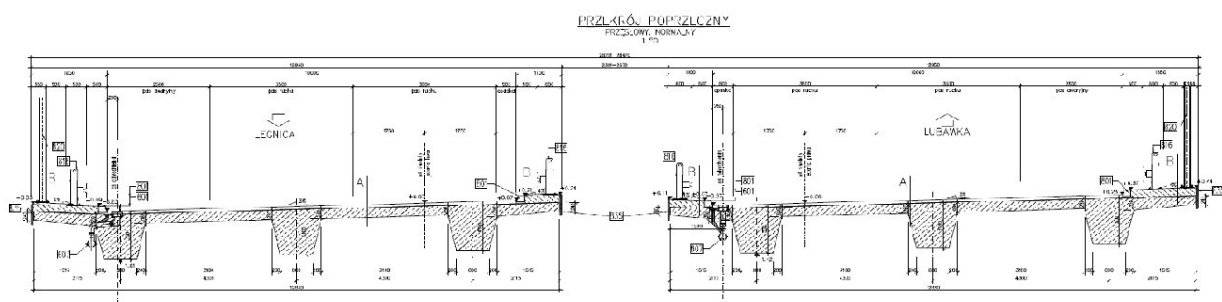
# WS-24

## km 41+431,41



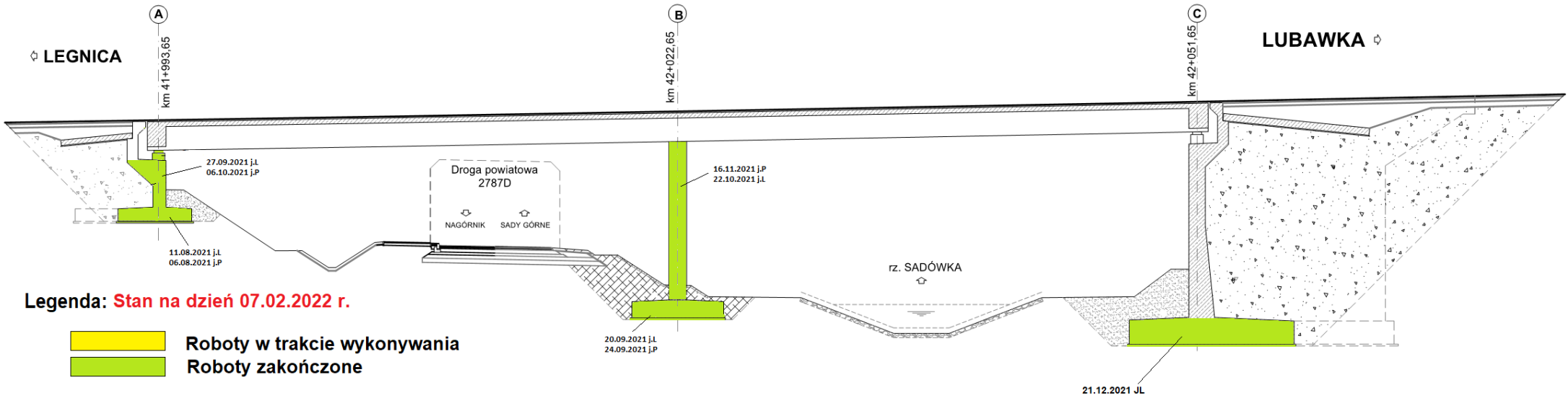
Legenda: Stan na dzień 07.02.2022 r.

- Roboty w trakcie wykonywania
- Roboty zakończone

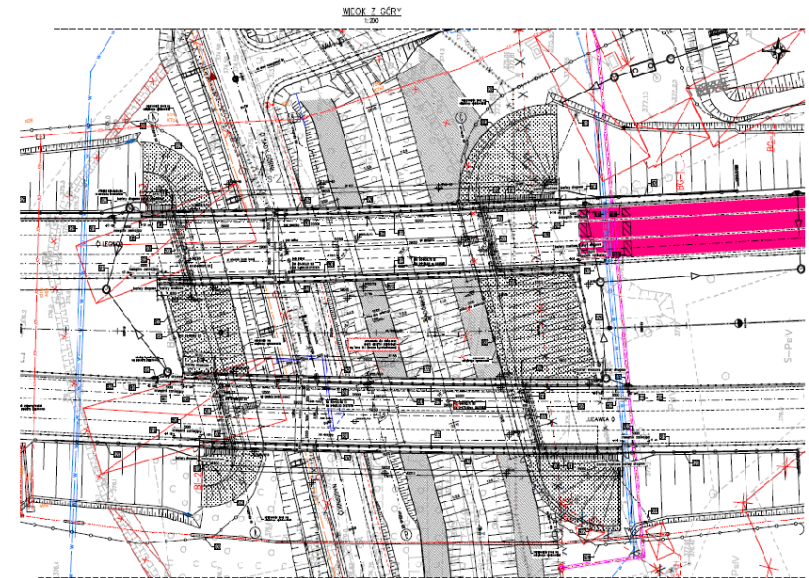
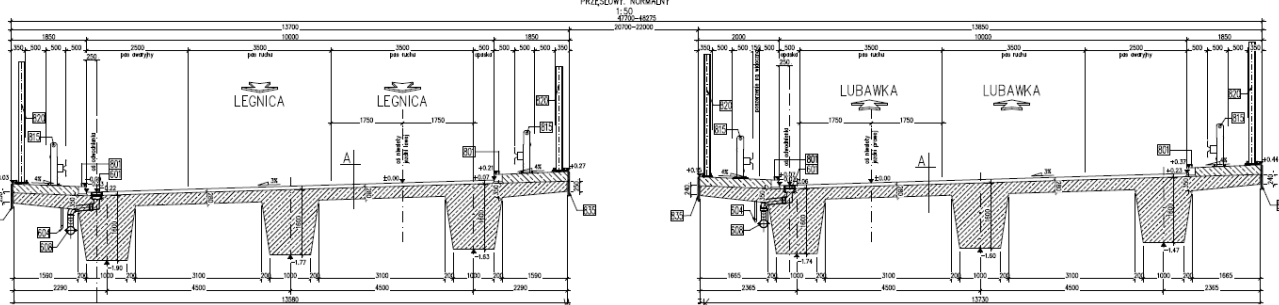


# MS-25

km 41+996,65



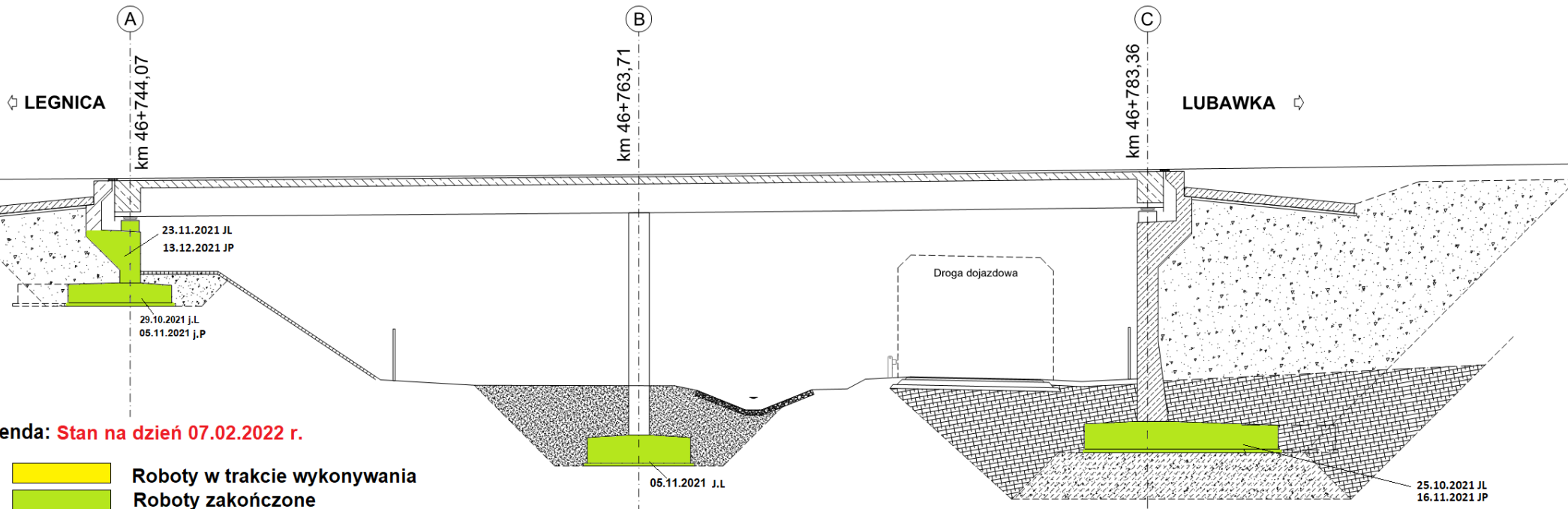
PRZEKRÓJ POPRZECZNY







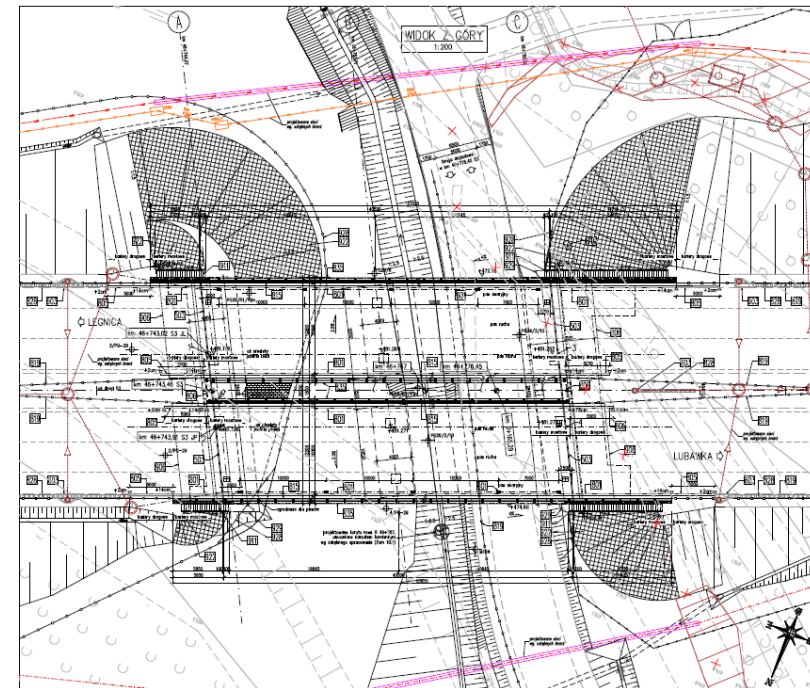
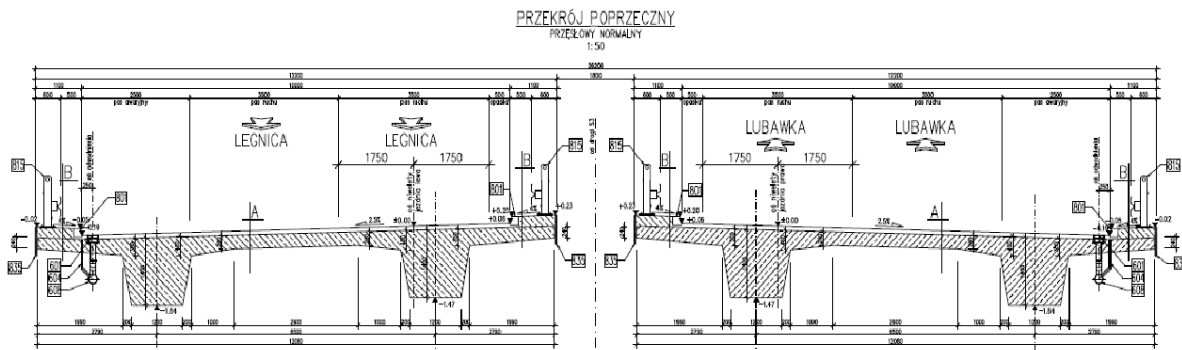
# PG-29

km 46+743,46

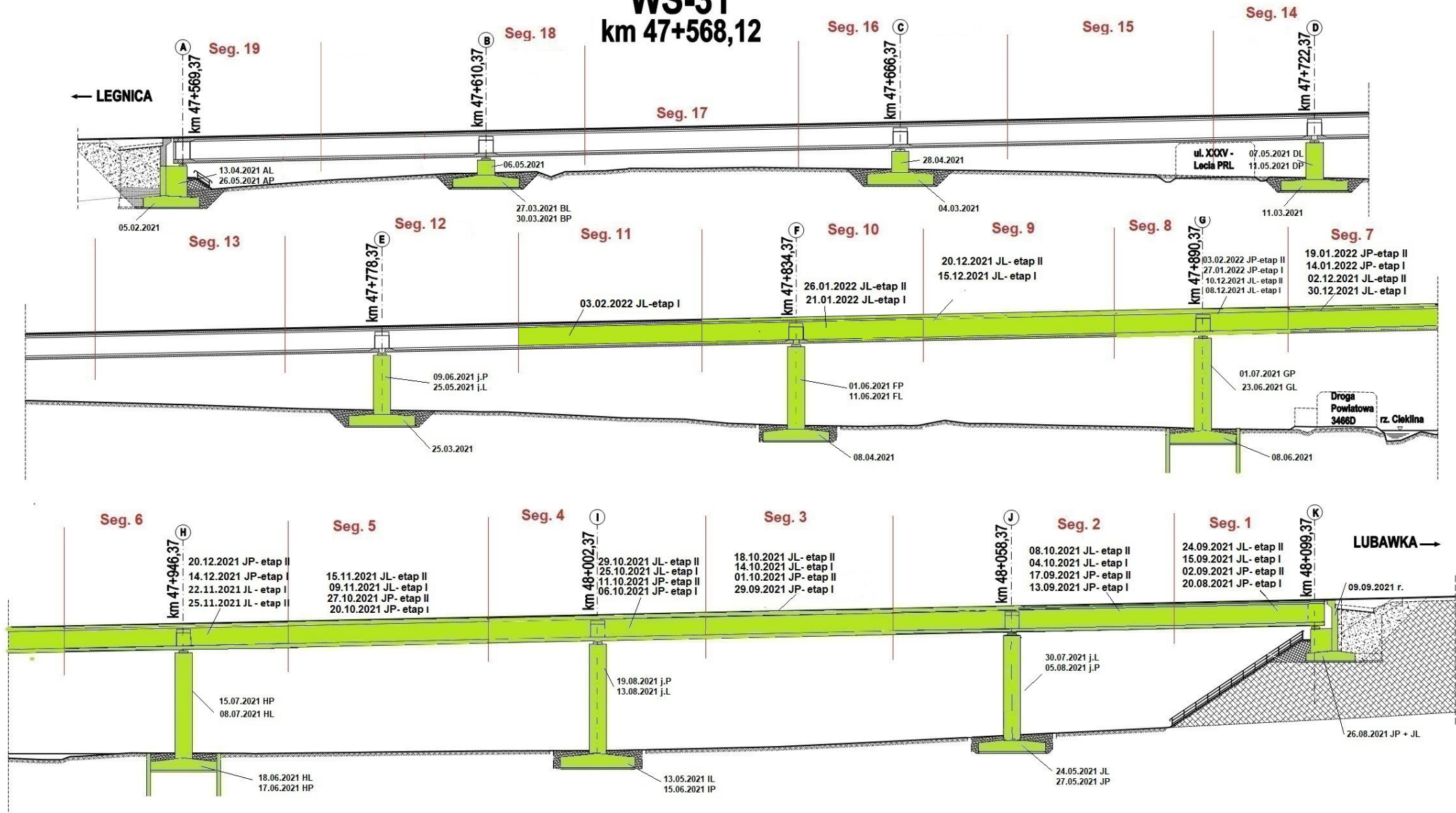


Legenda: Stan na dzień 07.02.2022 r.

-  Roboty w trakcie wykonywania
-  Roboty zakończone

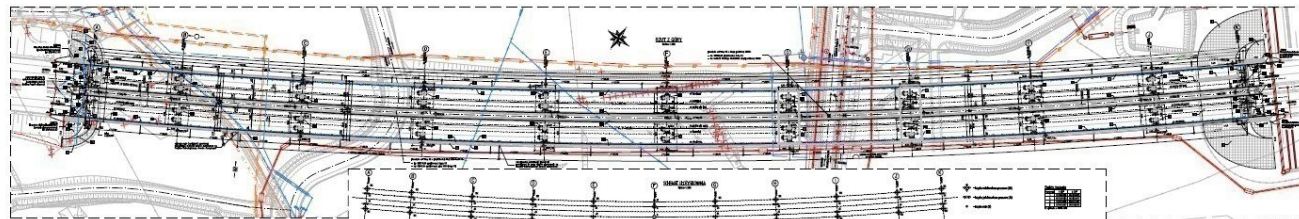
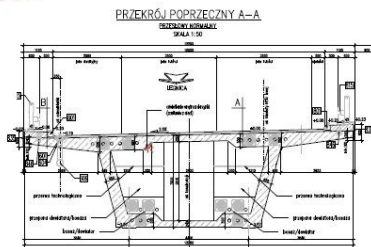


# WS-31 km 47+568,12



Legenda: Stan na dzień 07.02.2022 r.

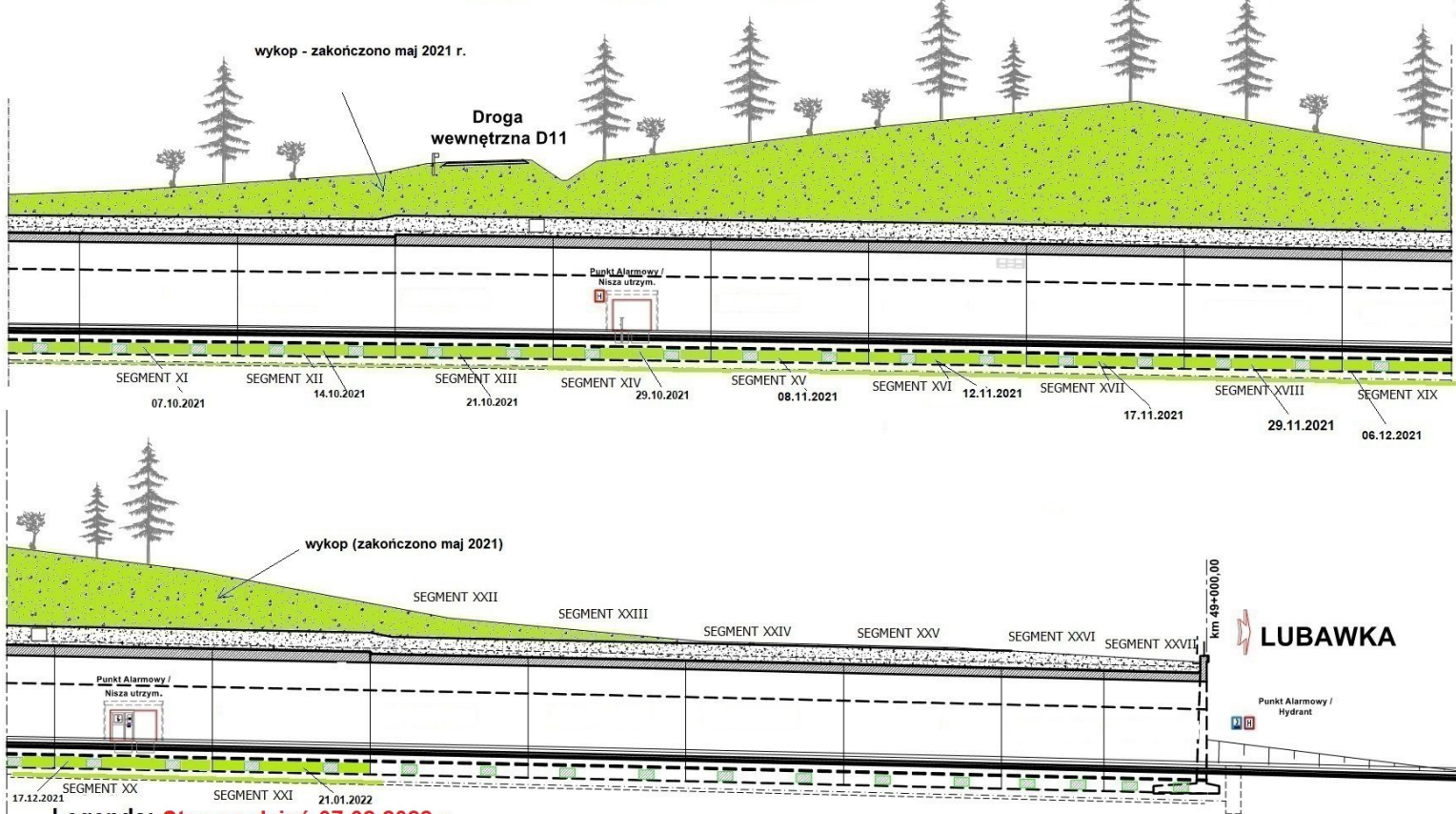
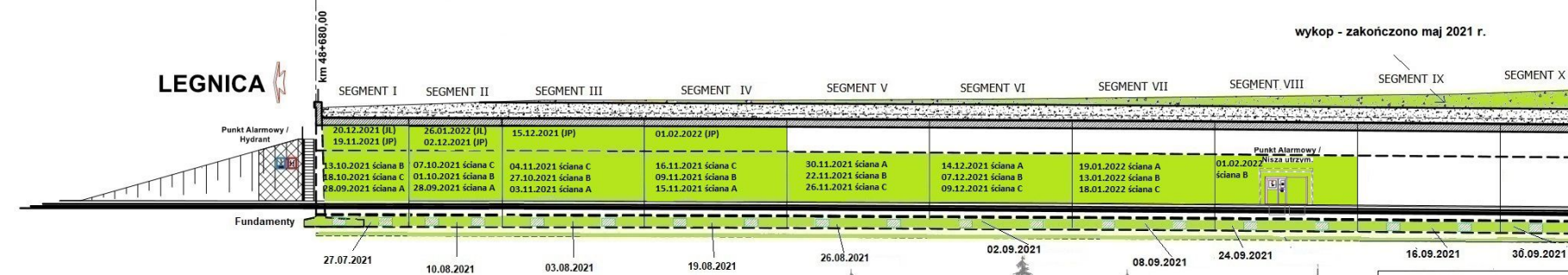
- Roboty w trakcie
- Roboty zakończone





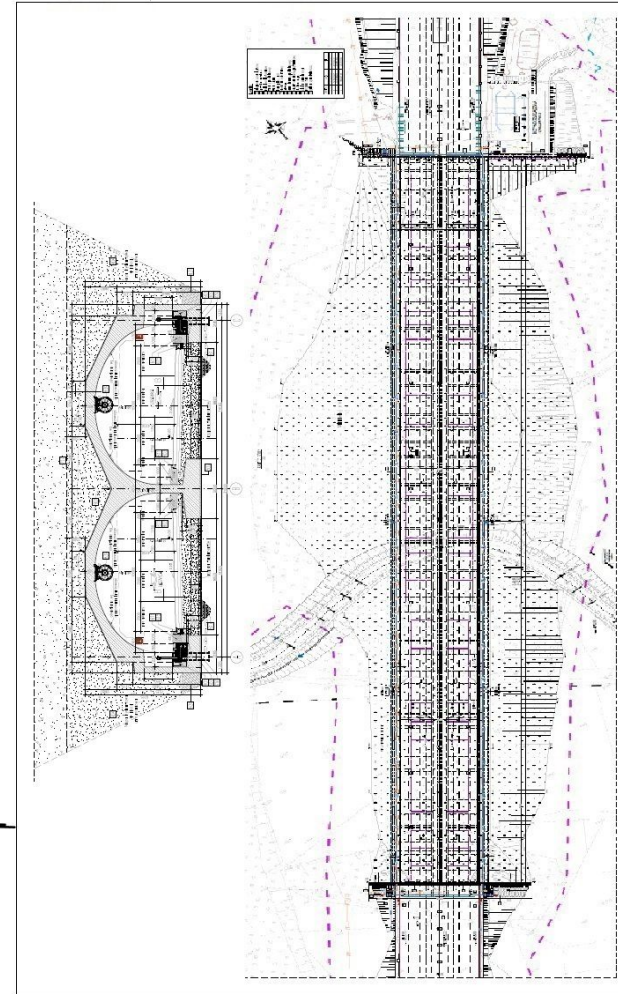
# TUNEL TS-32

## km 48+680,00 - 49+000,00



Legenda: Stan na dzień 07.02.2022 r.

- Roboty w trakcie wykonywania
- Roboty zakończone





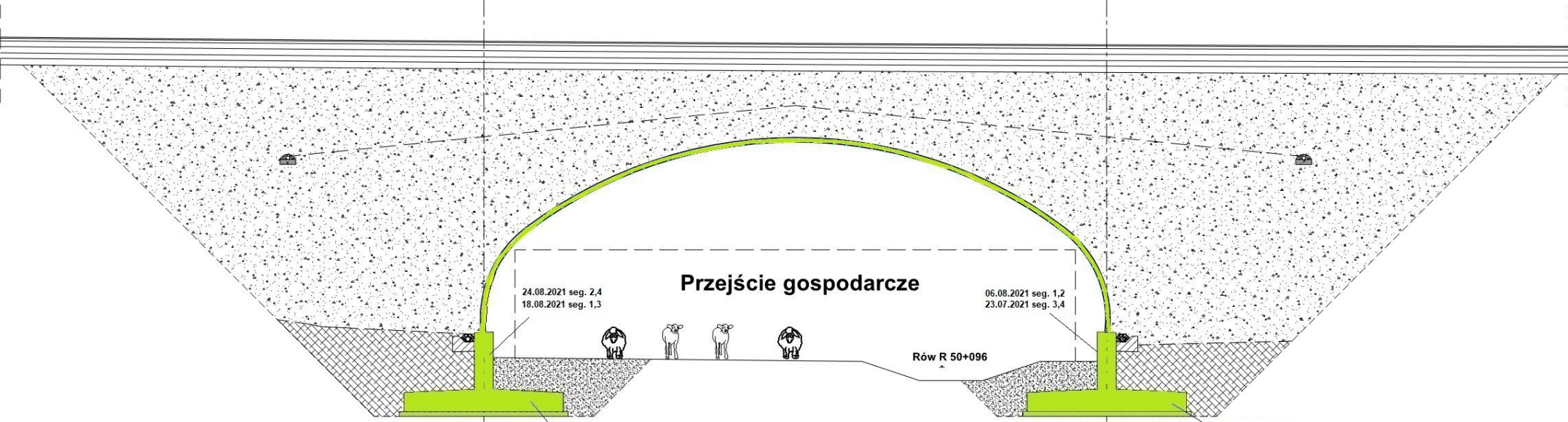
# PG 10.1

## km 50+097,00

◀ LEGNICA

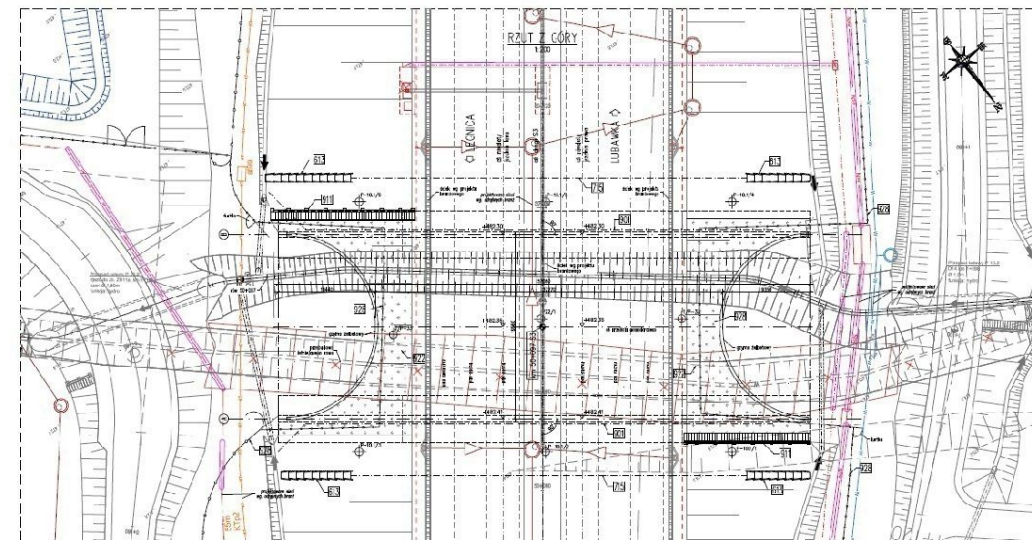
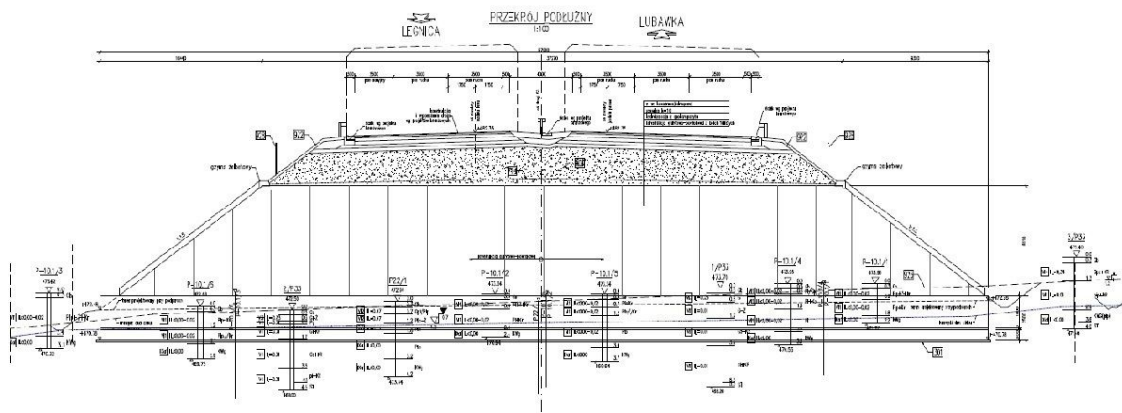
⊙ B

LUBAWKA ▶



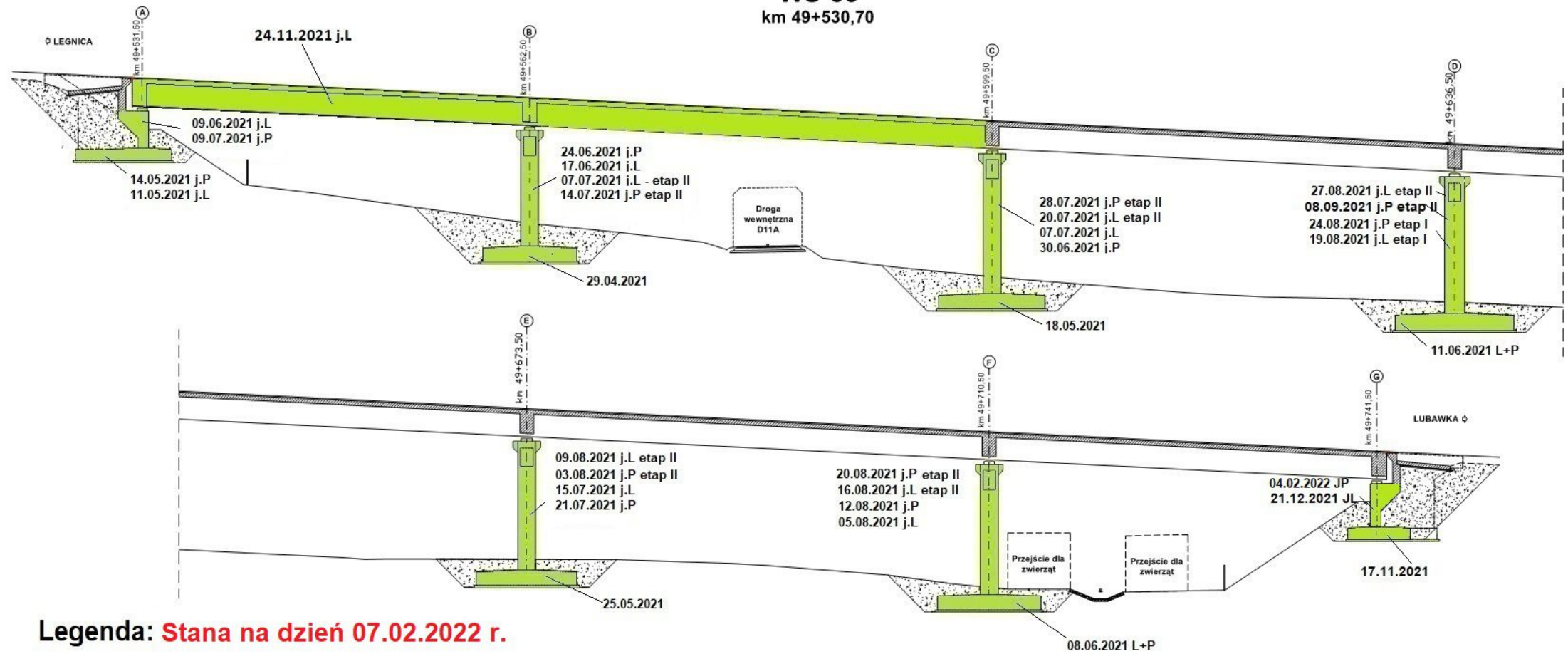
Legenda: Stan na dzień 07.02.2022 r.

- Roboty w trakcie wykonywania
- Roboty zakończone



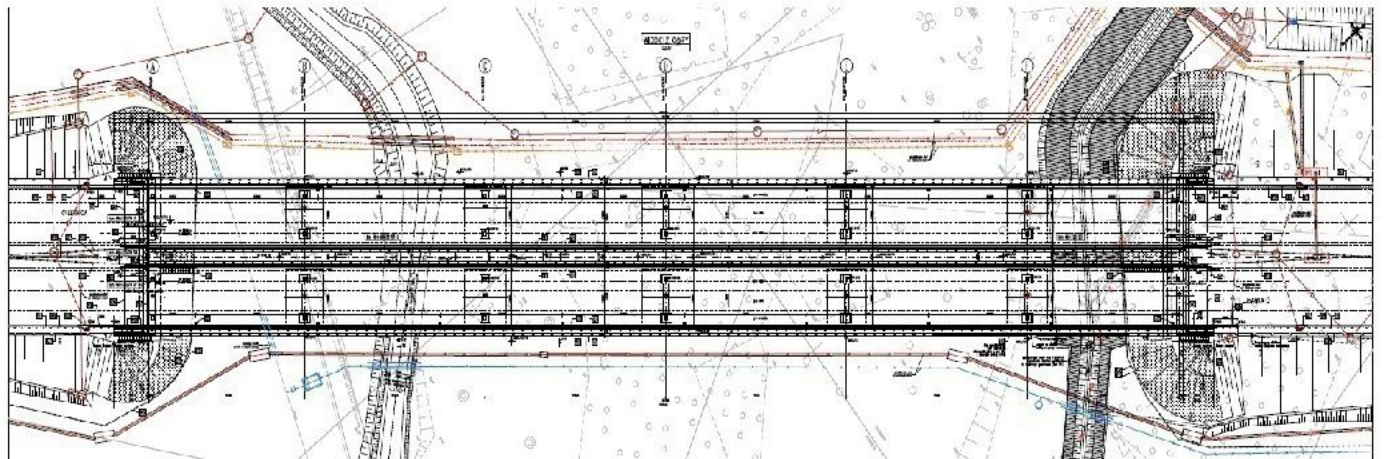
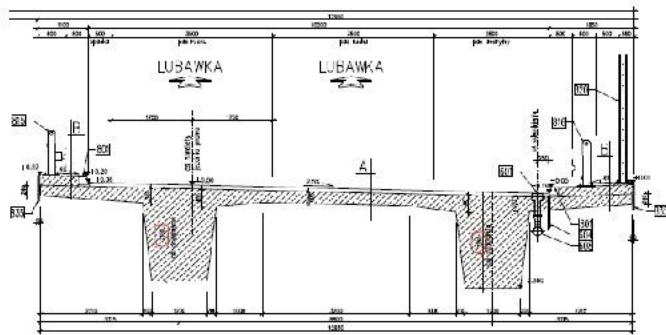


**WS-33**  
km 49+530,70



**Legenda: Stana na dzień 07.02.2022 r.**

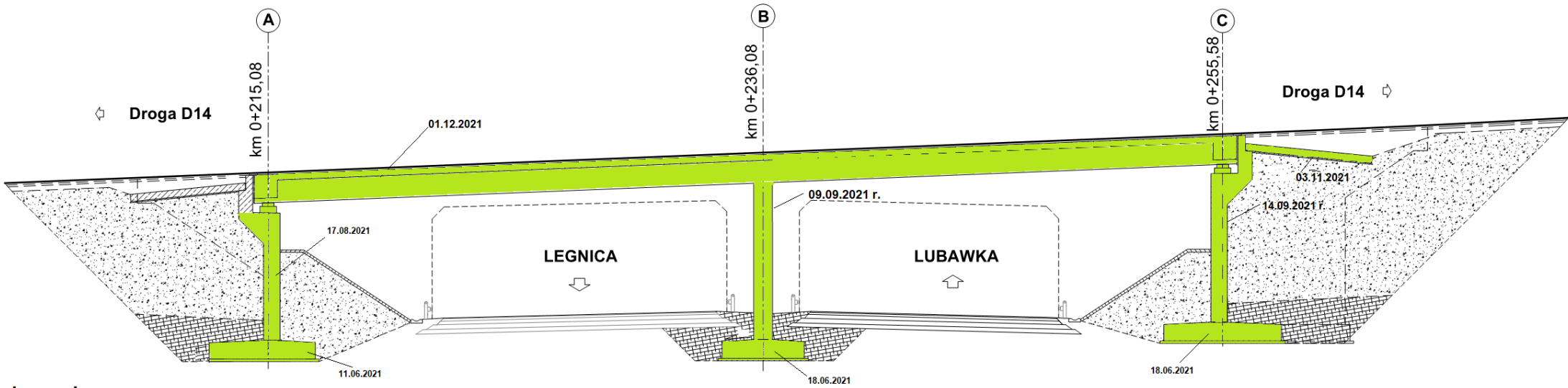
- Roboty w trakcie wykonywania
- Roboty zakończone





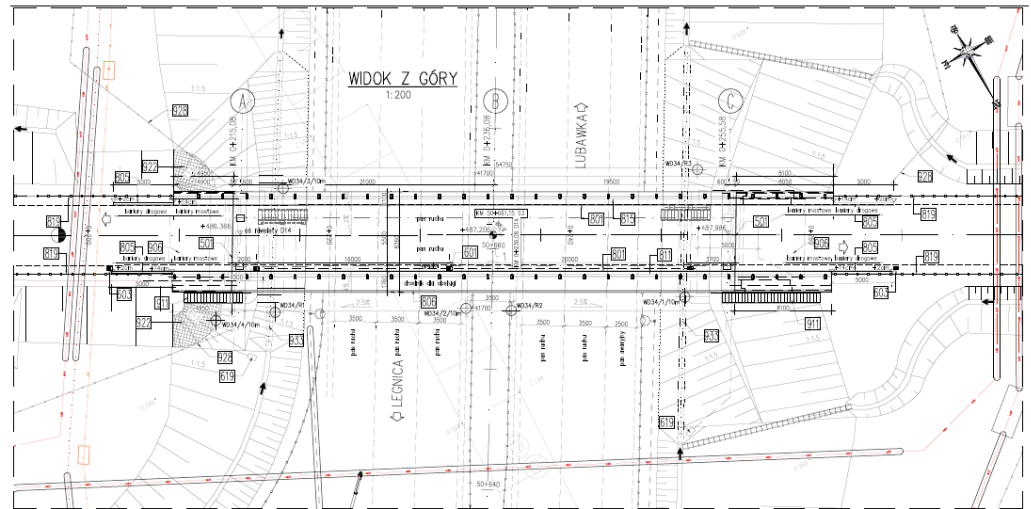
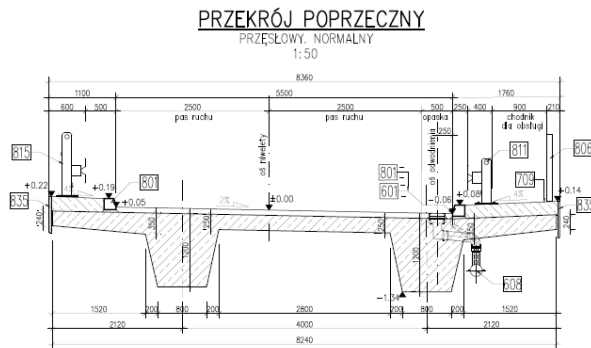
# WD-34

## km 50+661,15



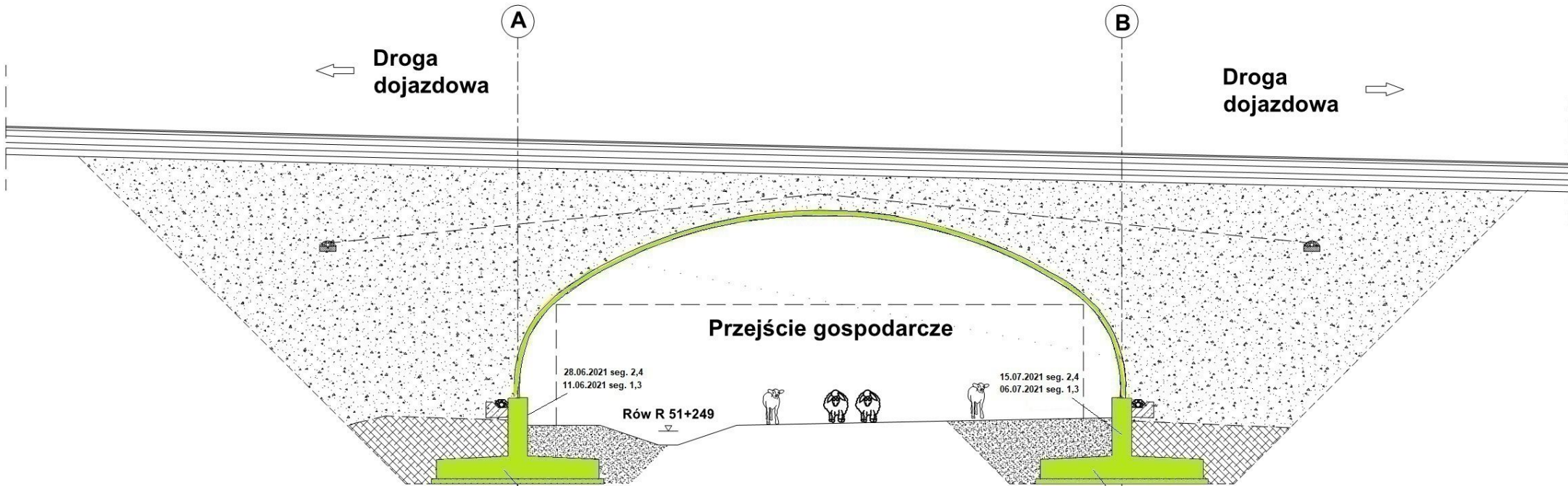
Legenda: Stan na dzień 07.02.2022 r.

- Roboty w trakcie wykonywania
- Roboty zakończone



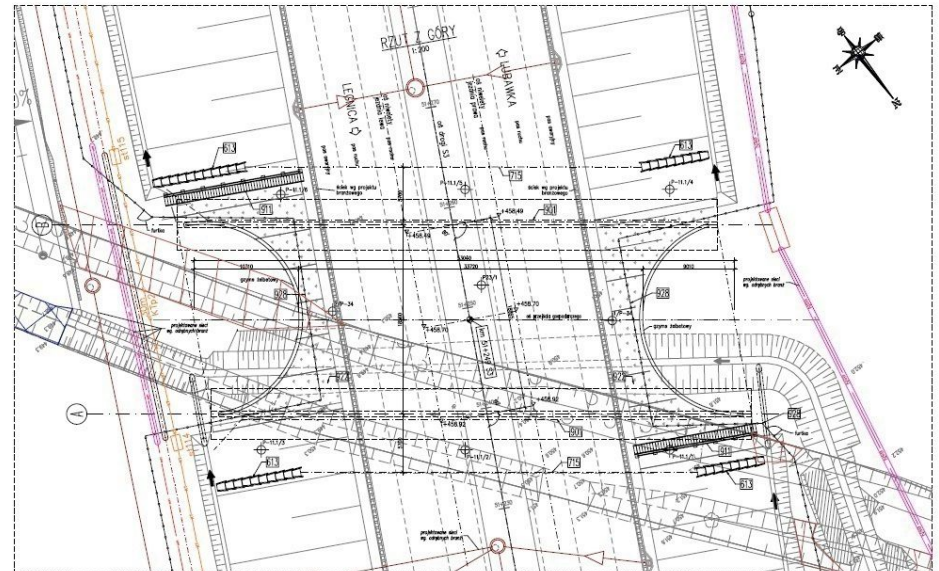
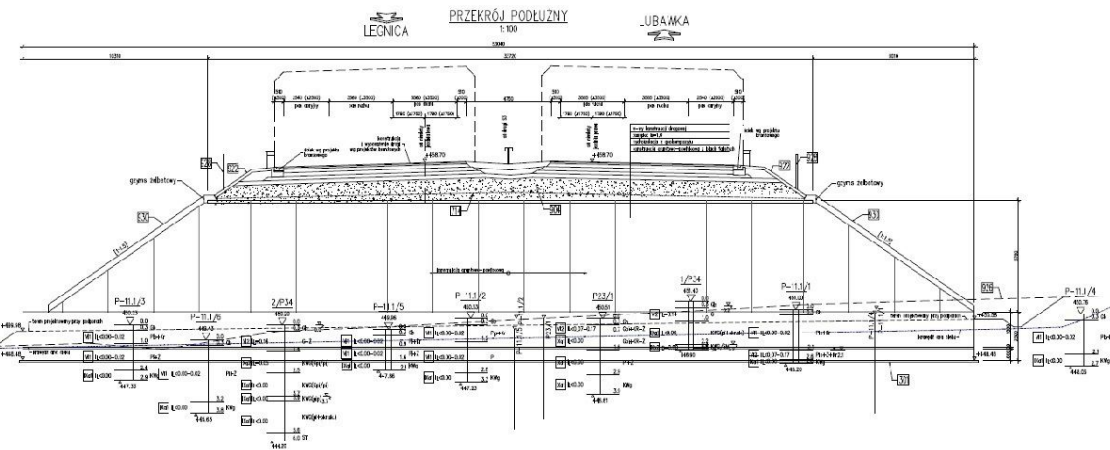
# PG 11.1

## km 51+249,00



Legenda: Stan na dzień 07.02.2022 r.

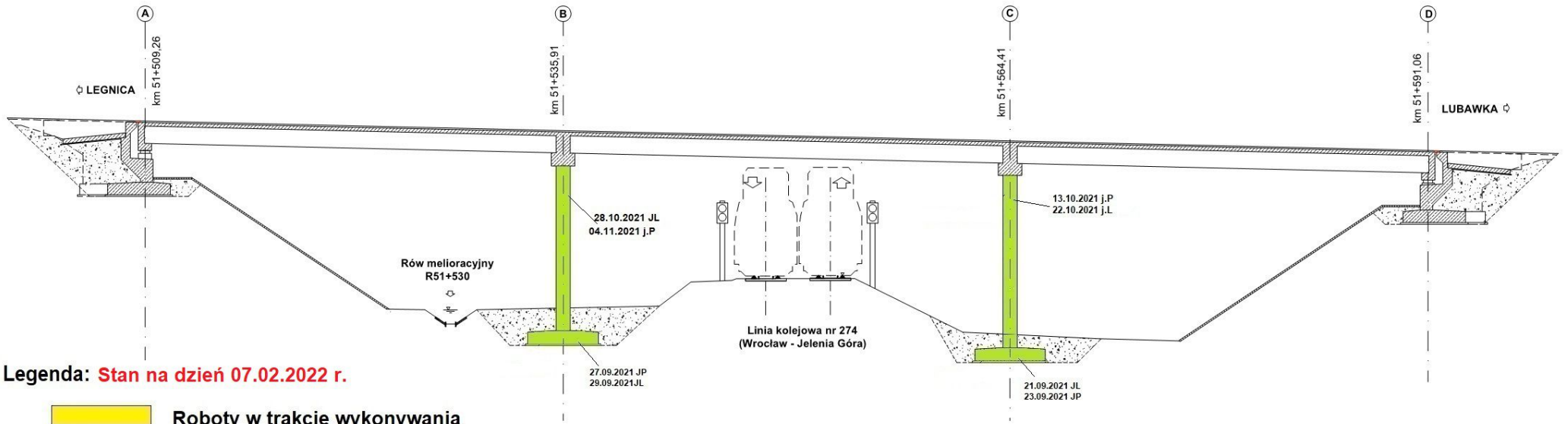
- Roboty w trakcie wykonywania
- Roboty zakończone





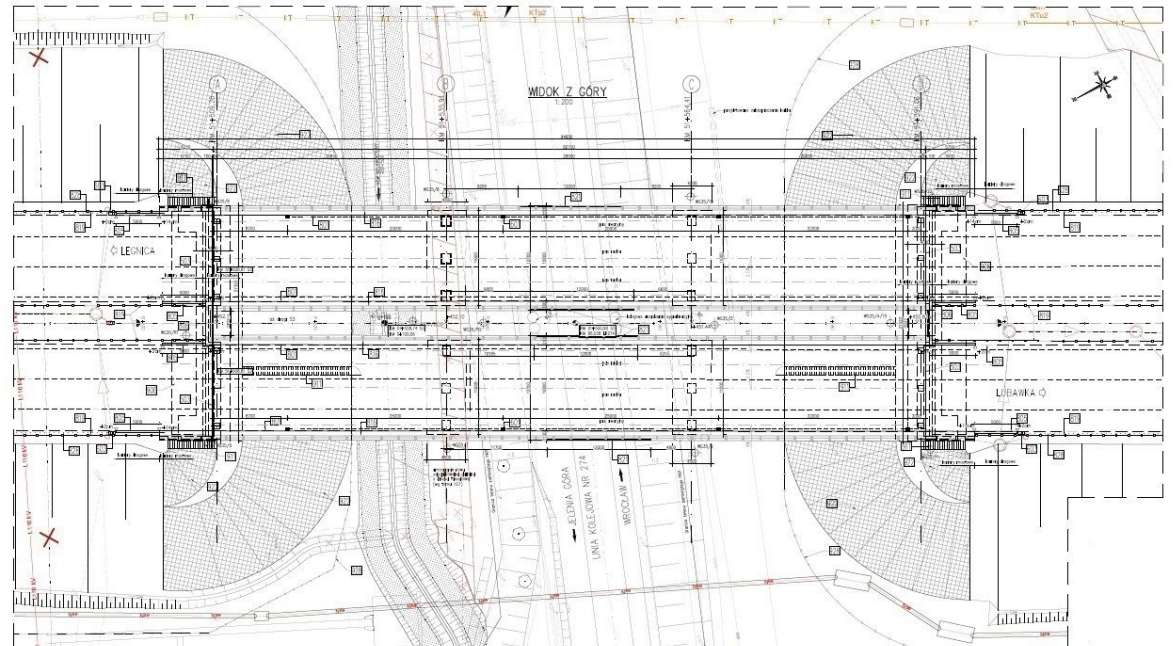
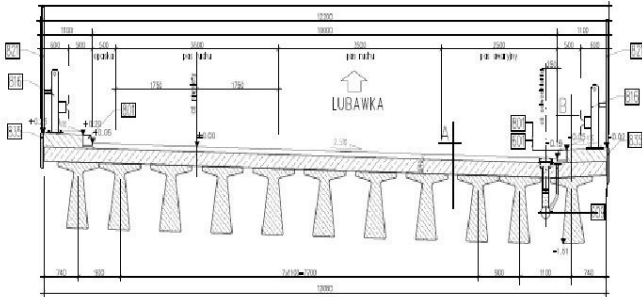
# WS-35

## km 51+508,81



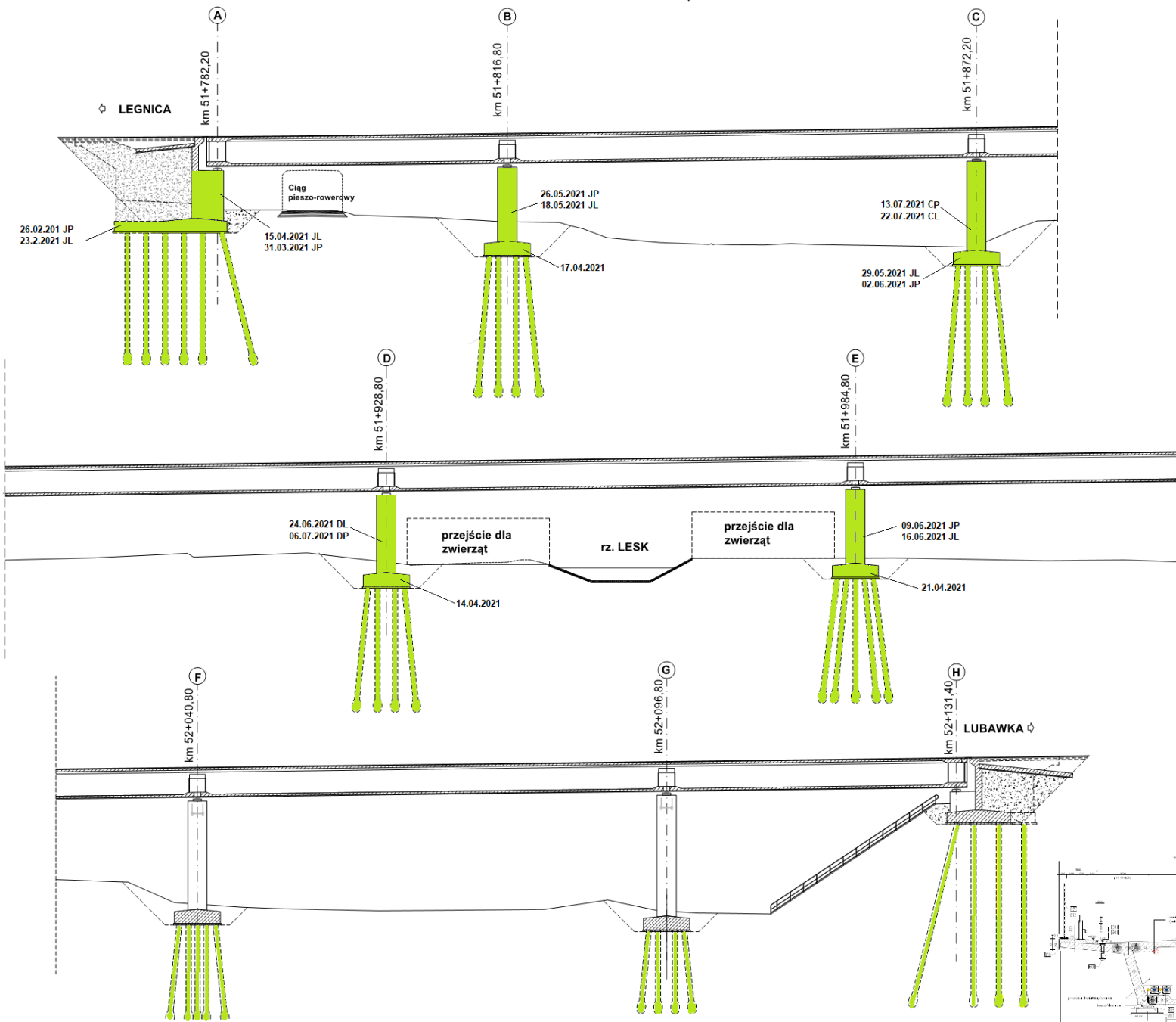
Legenda: Stan na dzień 07.02.2022 r.

- Roboty w trakcie wykonywania
- Roboty zakończone



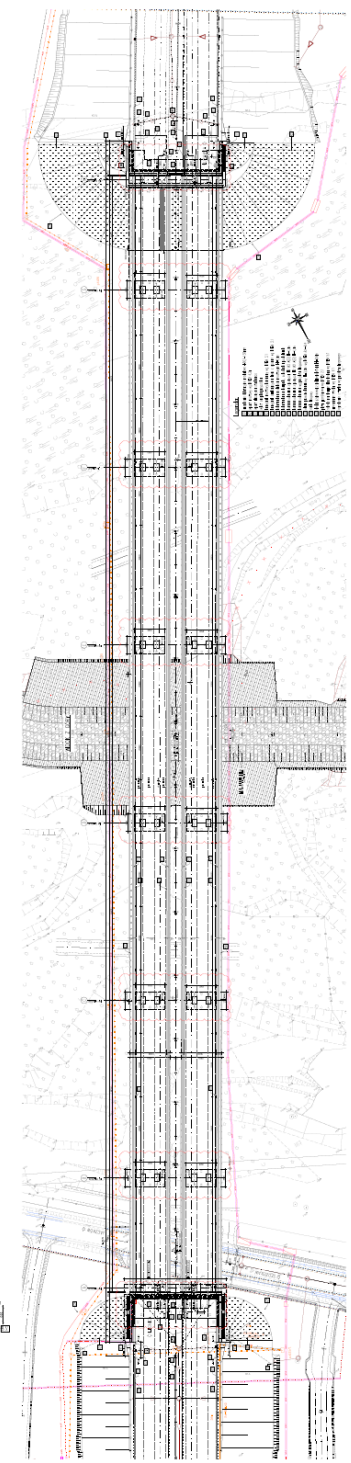
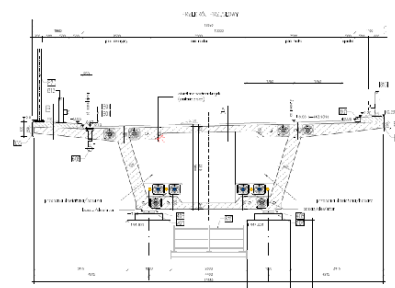
# WS-36

km 51+780,95



Legenda: Stan na dzień 07.02.2022 r.

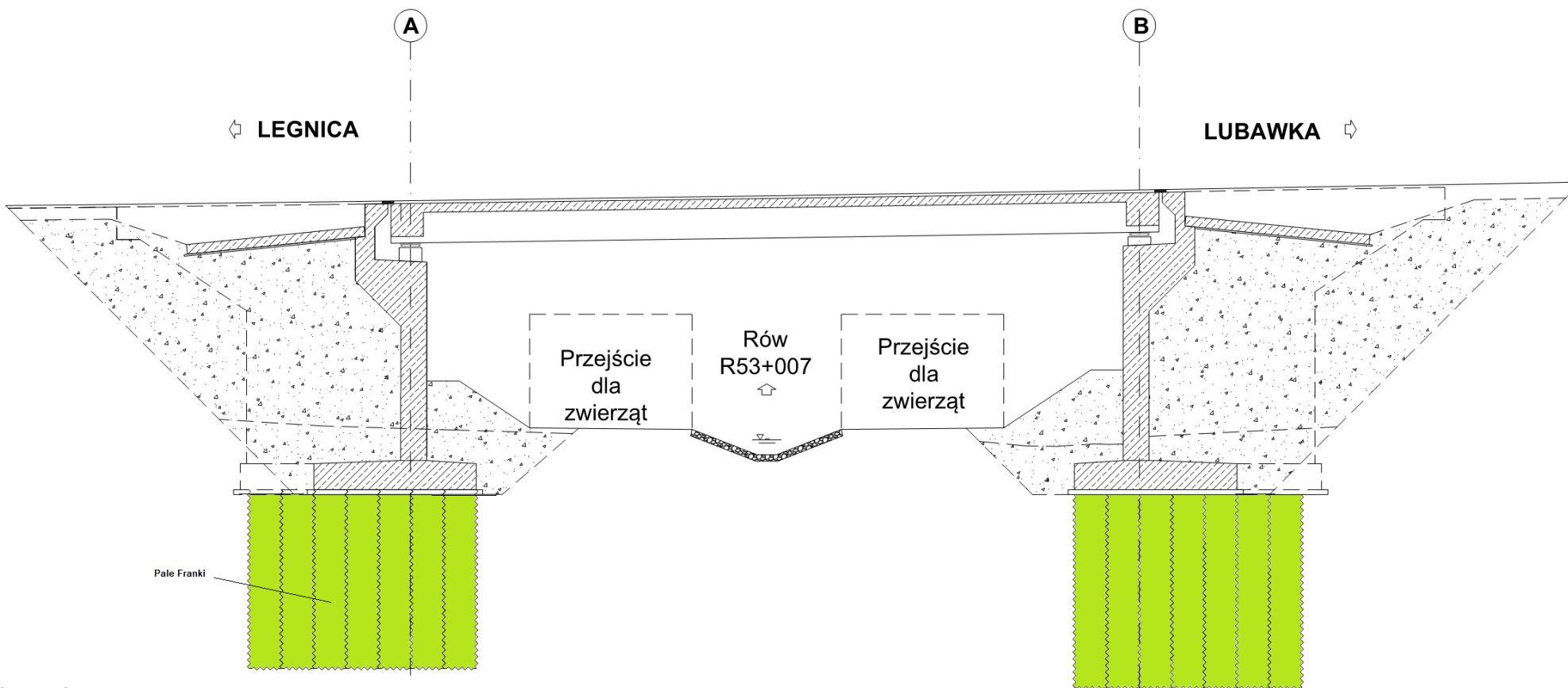
- Roboty w trakcie wykonywania
- Roboty zakończone





# WS-37

km 52+994,25



Legenda: Stan na dzień 07.02.2022 r.

- Roboty w trakcie wykonywania
- Roboty zakończone

PRZEKRÓJ POPRZECZNY  
PRZEKROJY NORMALNY  
1:50

