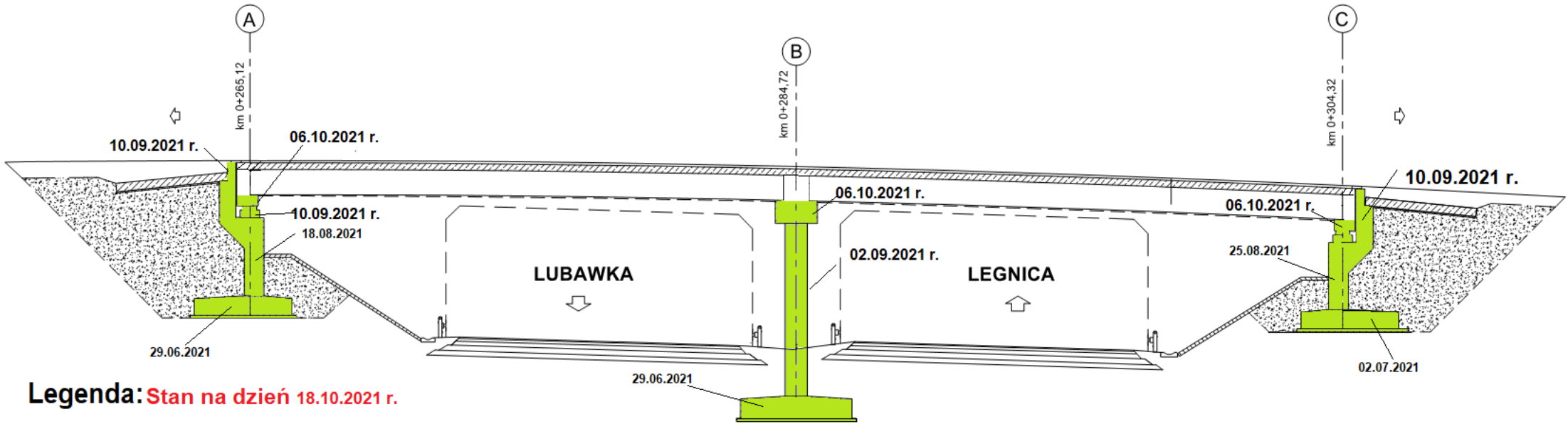


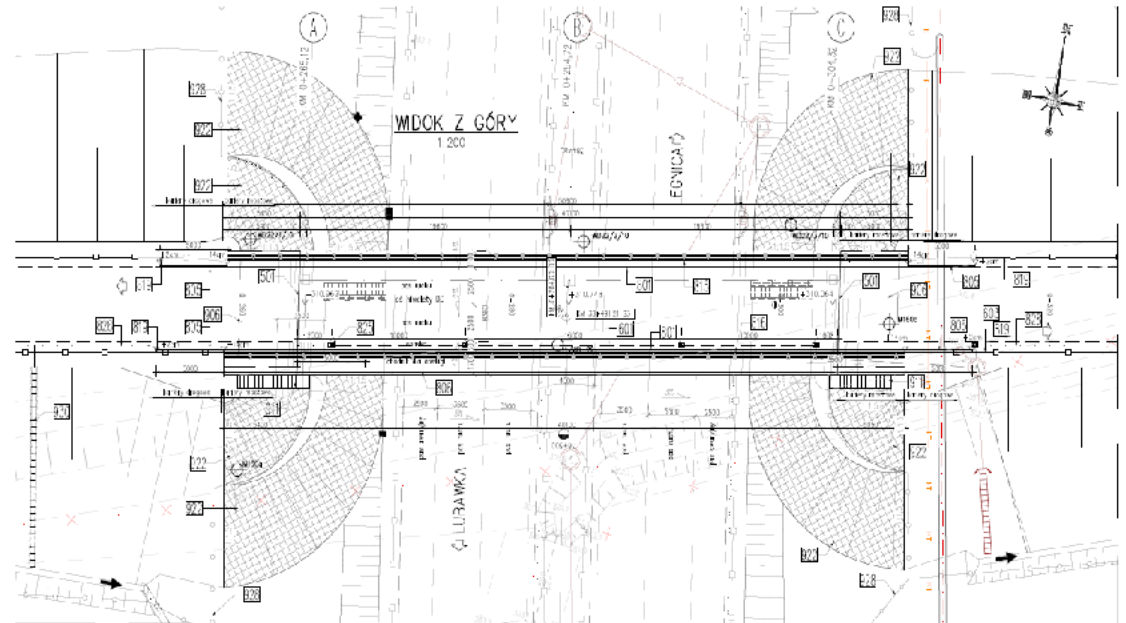
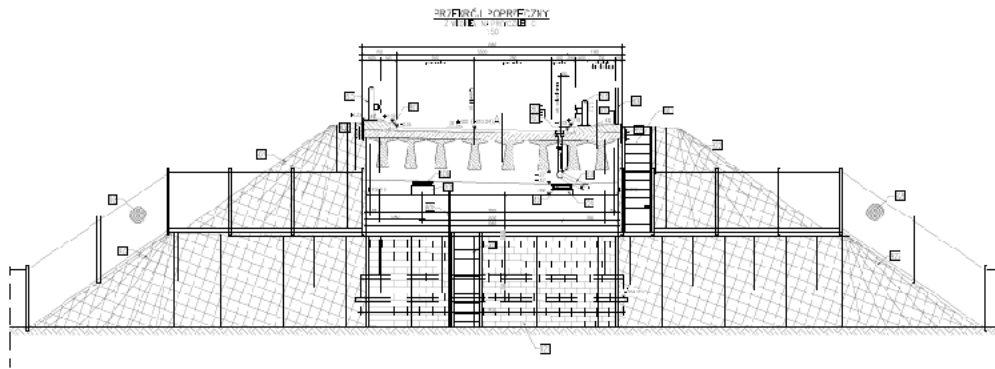
# WD-22

## km 38+491,21



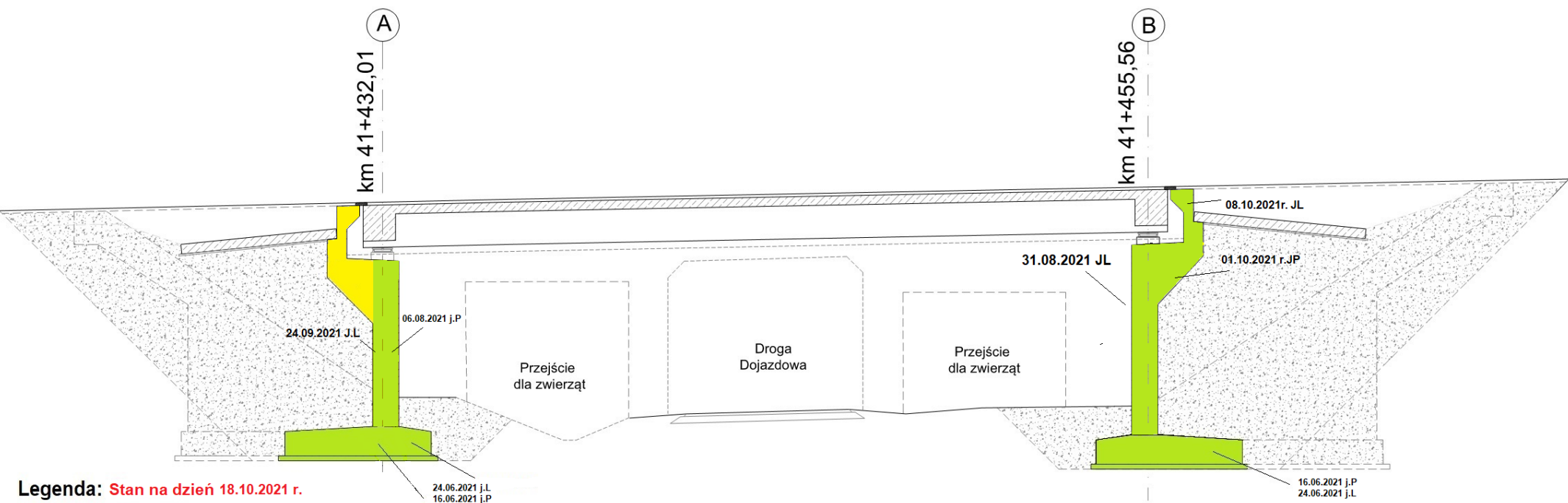
Legenda: Stan na dzień 18.10.2021 r.

- Roboty w trakcie wykonywania
- Roboty zakończone



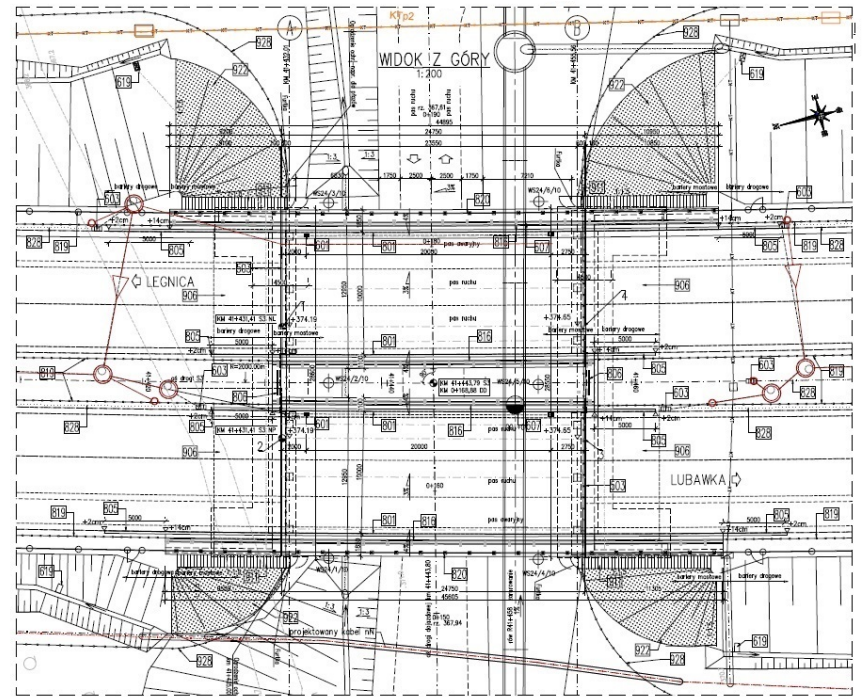
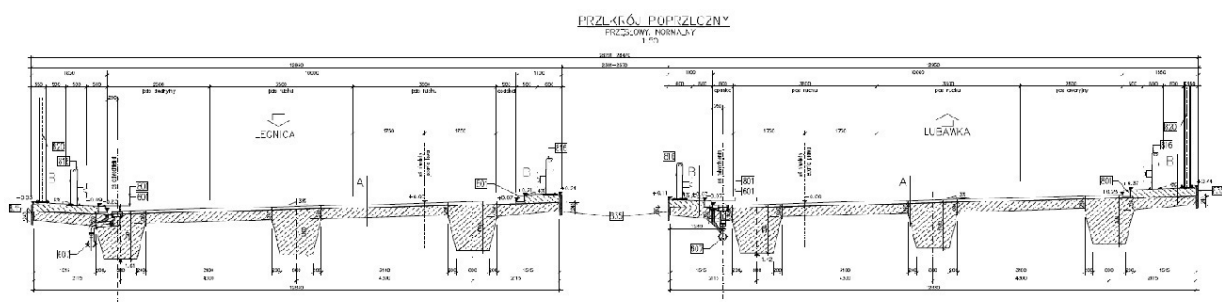
# WS-24

## km 41+431,41



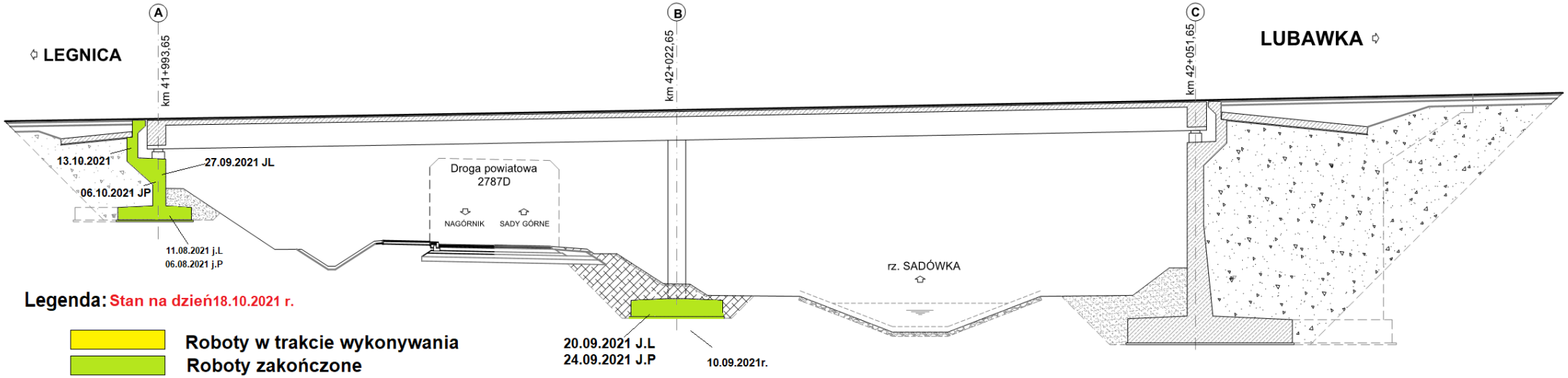
Legenda: Stan na dzień 18.10.2021 r.

- Roboty w trakcie wykonywania
- Roboty zakończone



# MS-25

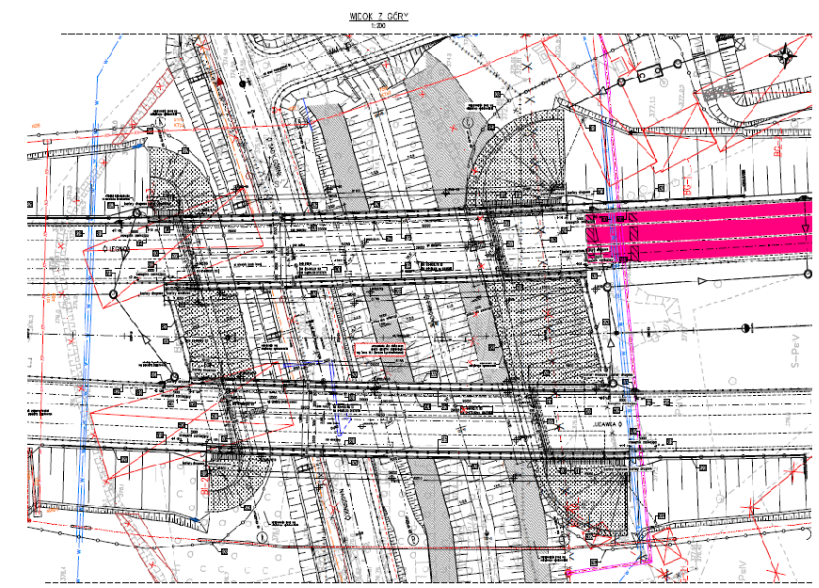
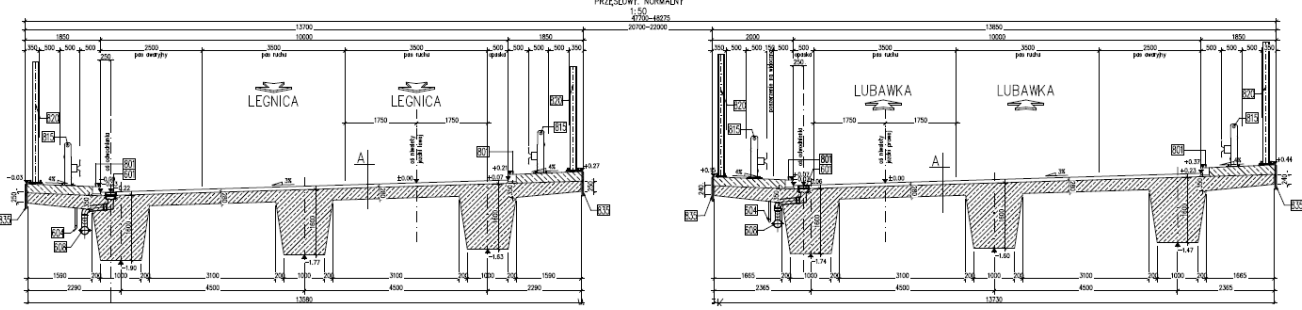
km 41+996,65



Legenda: Stan na dzień 18.10.2021 r.

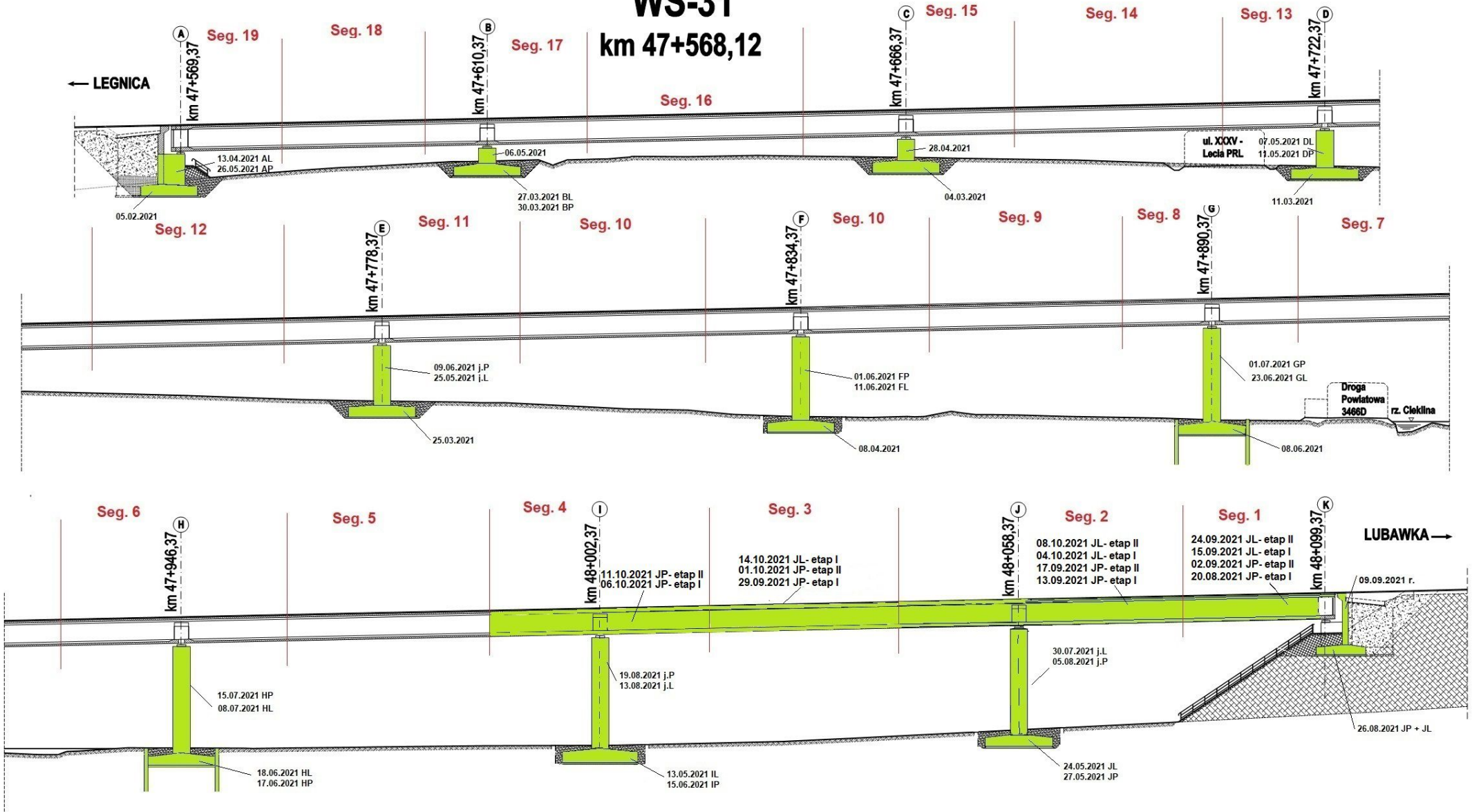
- Roboty w trakcie wykonywania
- Roboty zakończone

PRZEKRÓJ POPRZECZNY



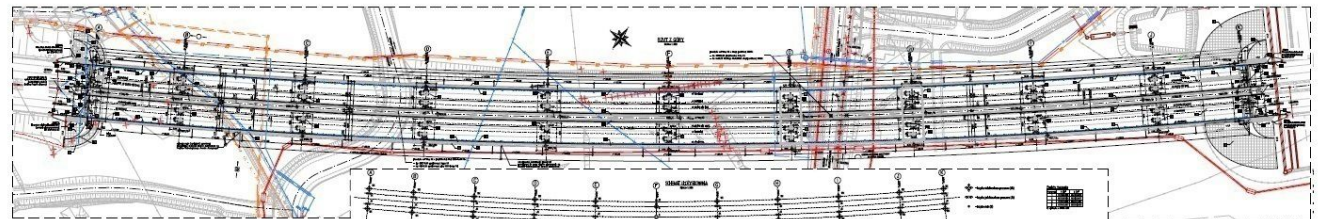
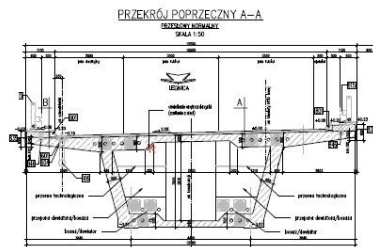
# WS-31

km 47+568,12

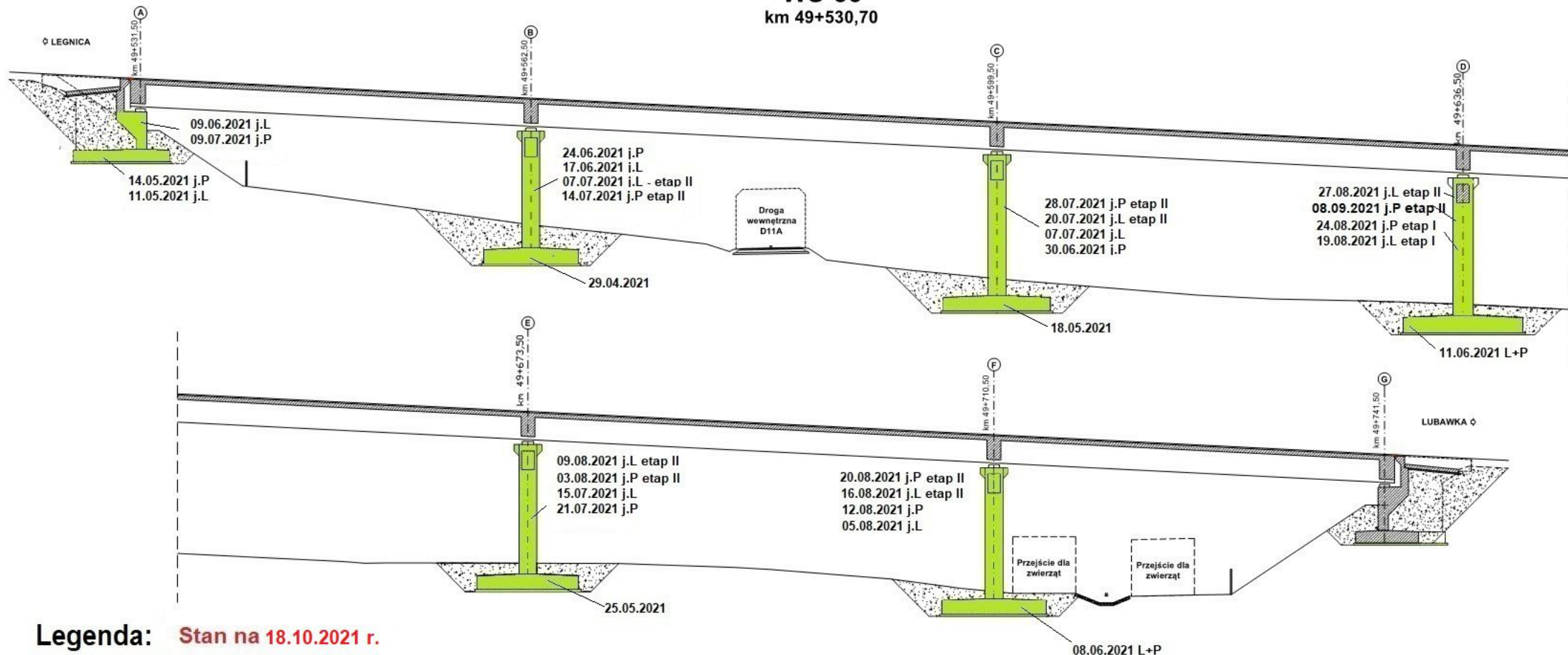


Legenda: Stan na dzień 18.10.2021 r.

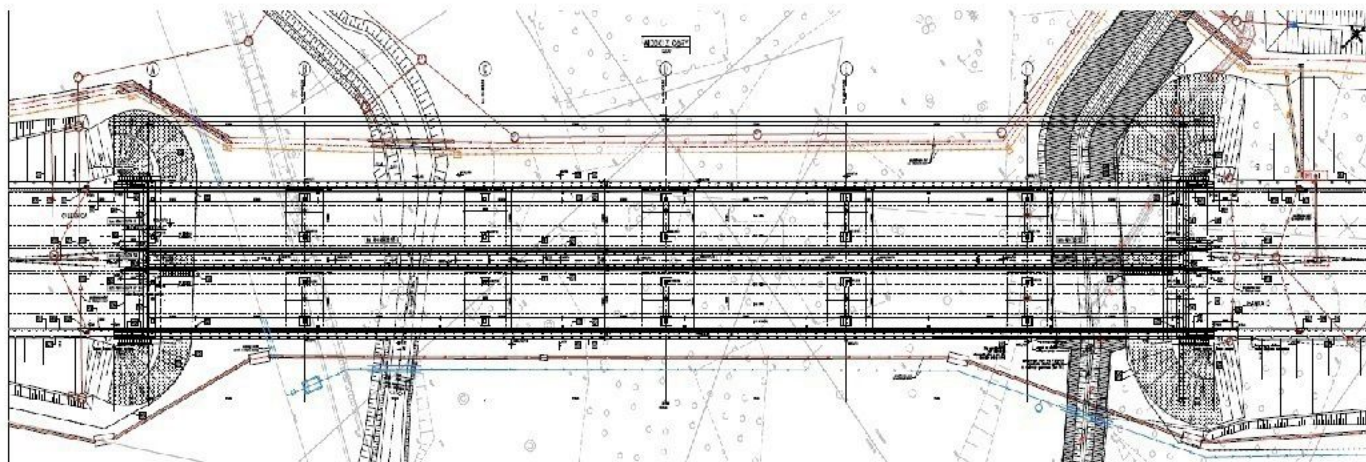
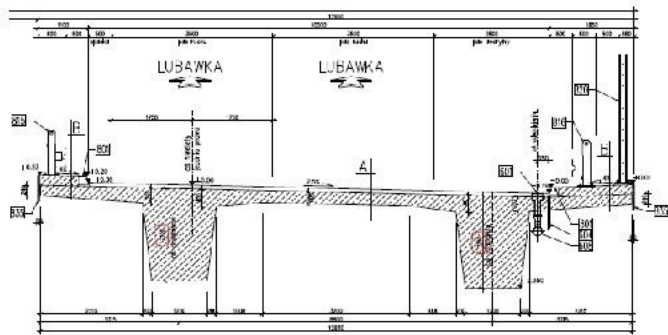
- Roboty w trakcie
- Roboty zakończone



**WS-33**  
km 49+530,70

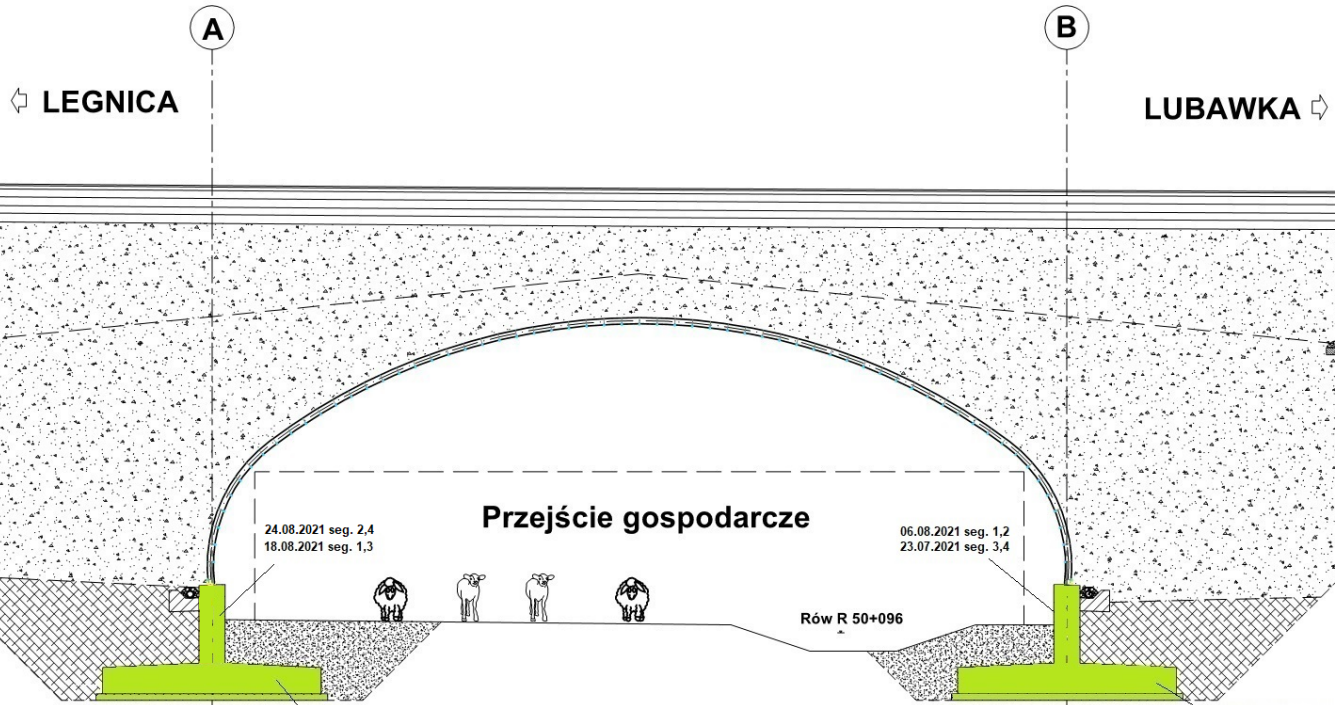


**Legenda:** Stan na 18.10.2021 r.



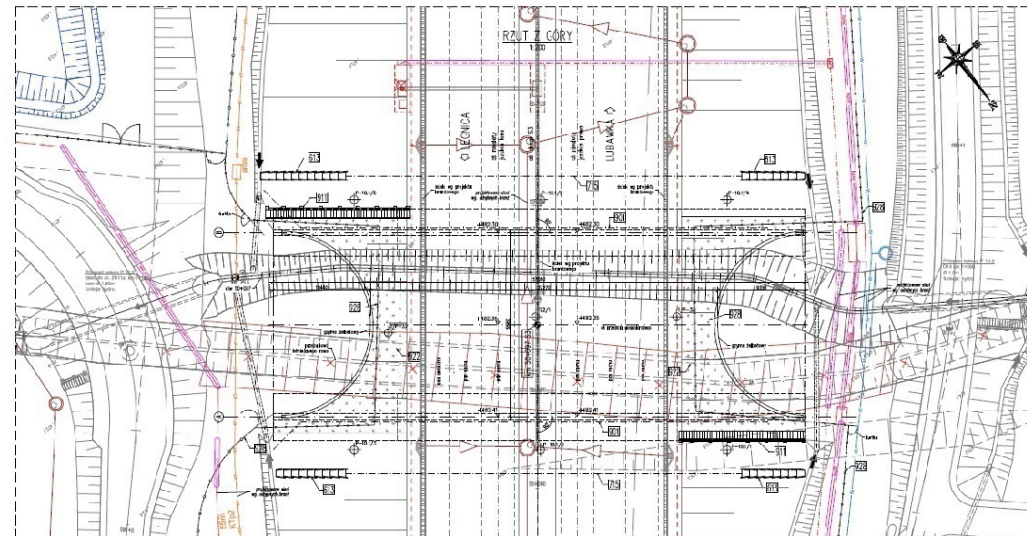
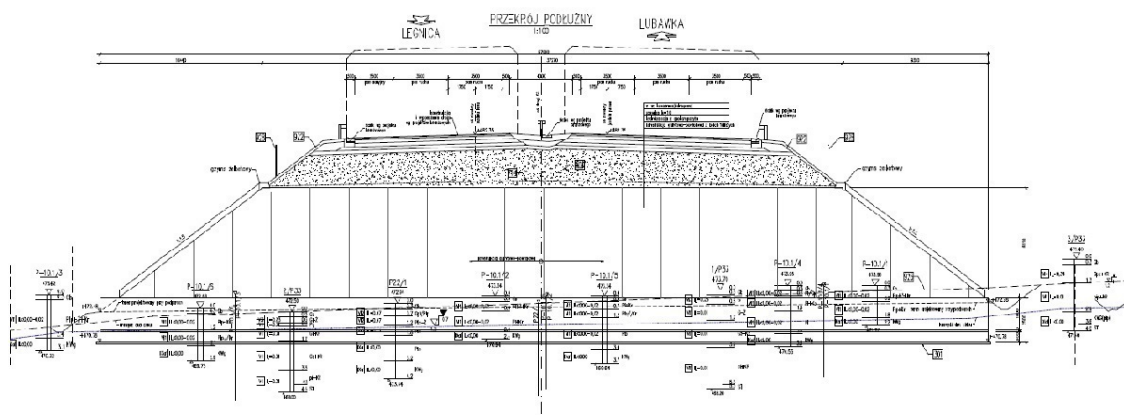
# PG 10.1

## km 50+097,00



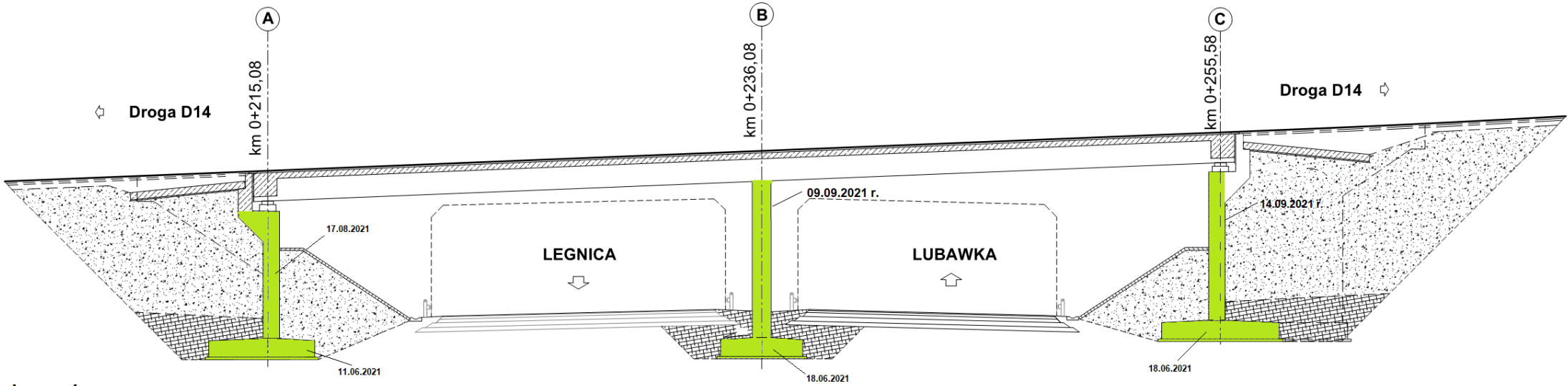
Legenda: Stan na dzień 18.10.2021 r.

- Roboty w trakcie wykonywania
- Roboty zakończone



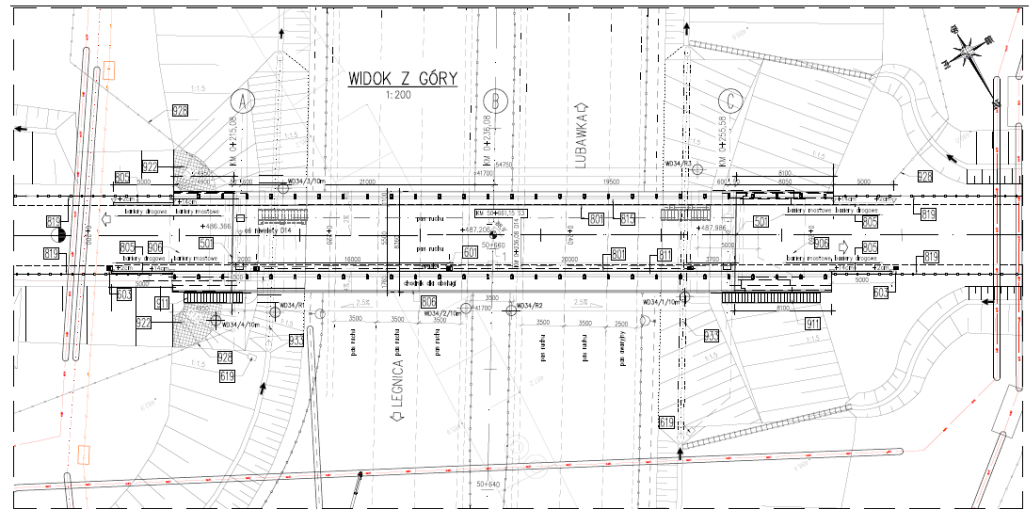
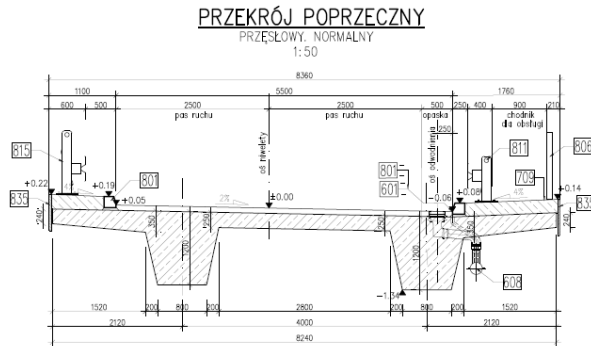
# WD-34

## km 50+661,15



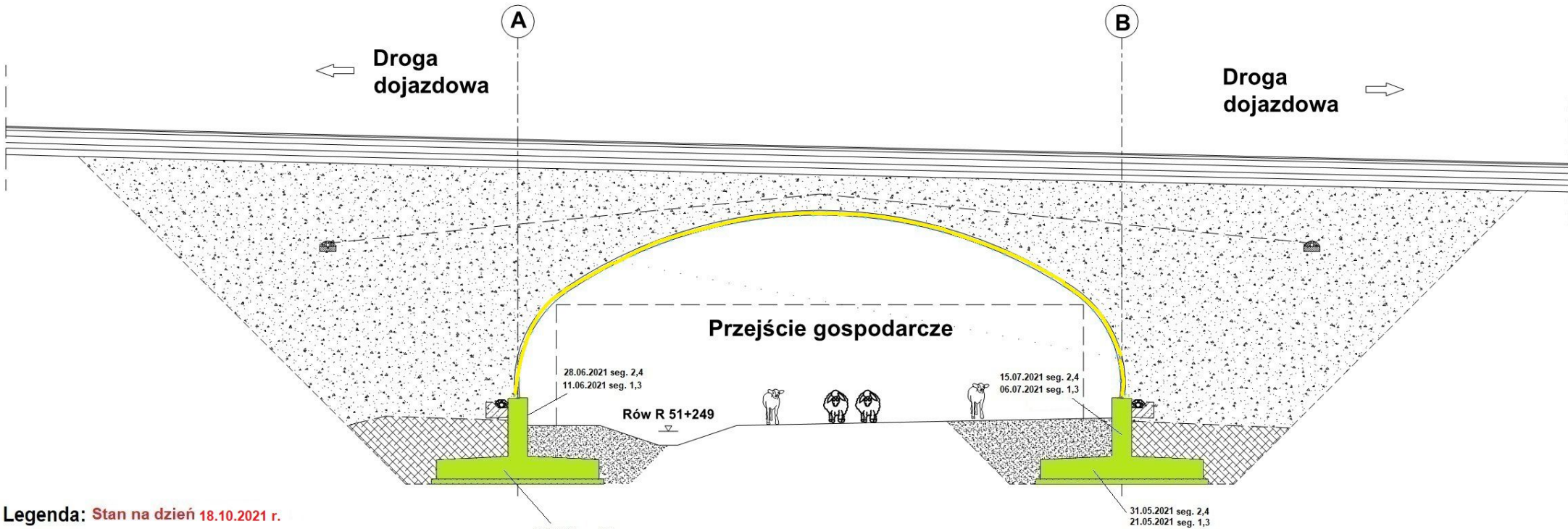
Legenda: Stan na 18.10.2021 r.

- Roboty w trakcie wykonywania
- Roboty zakończone



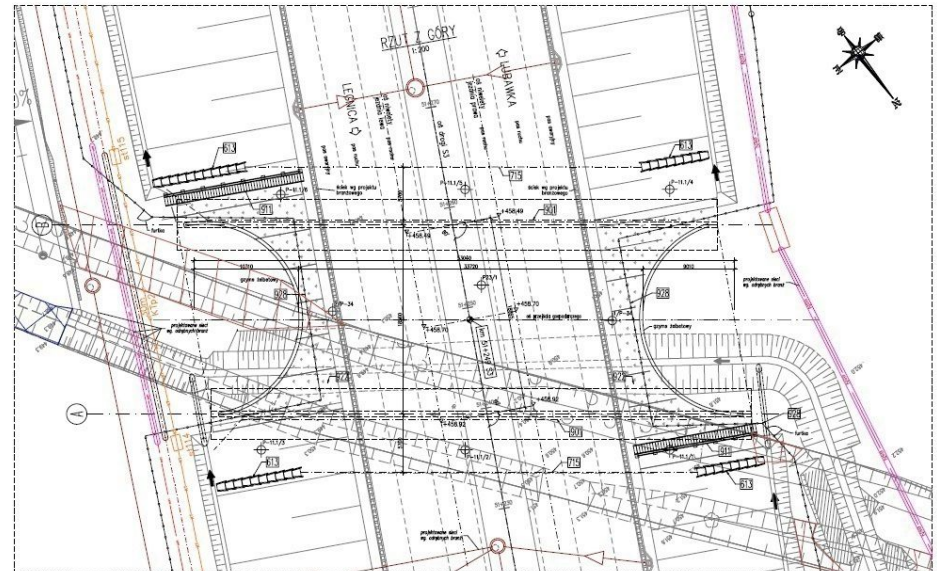
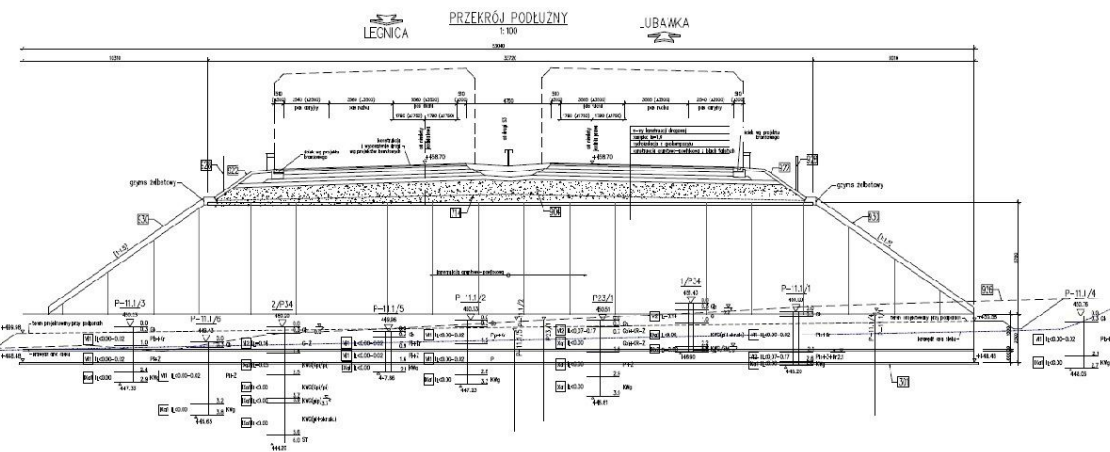
# PG 11.1

## km 51+249,00



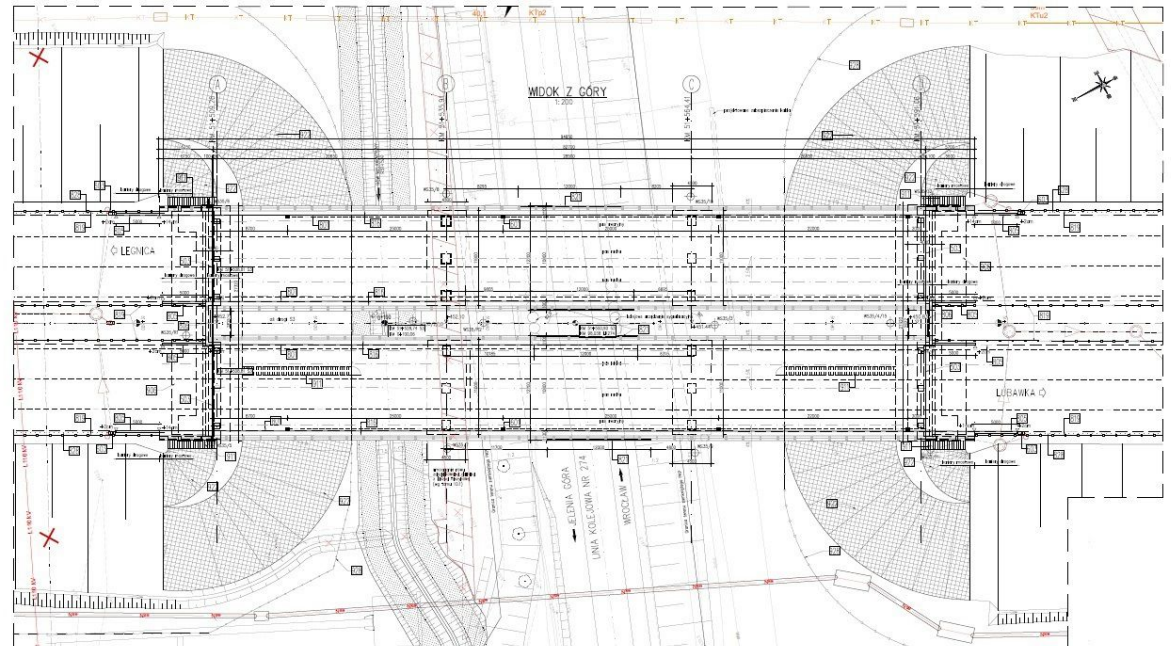
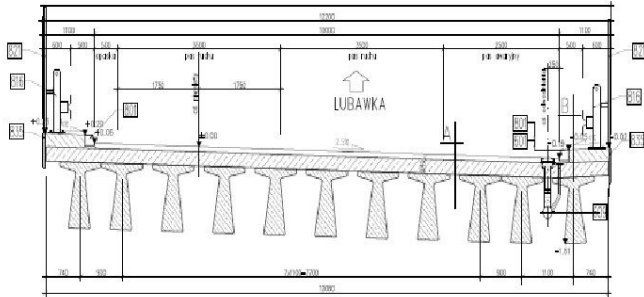
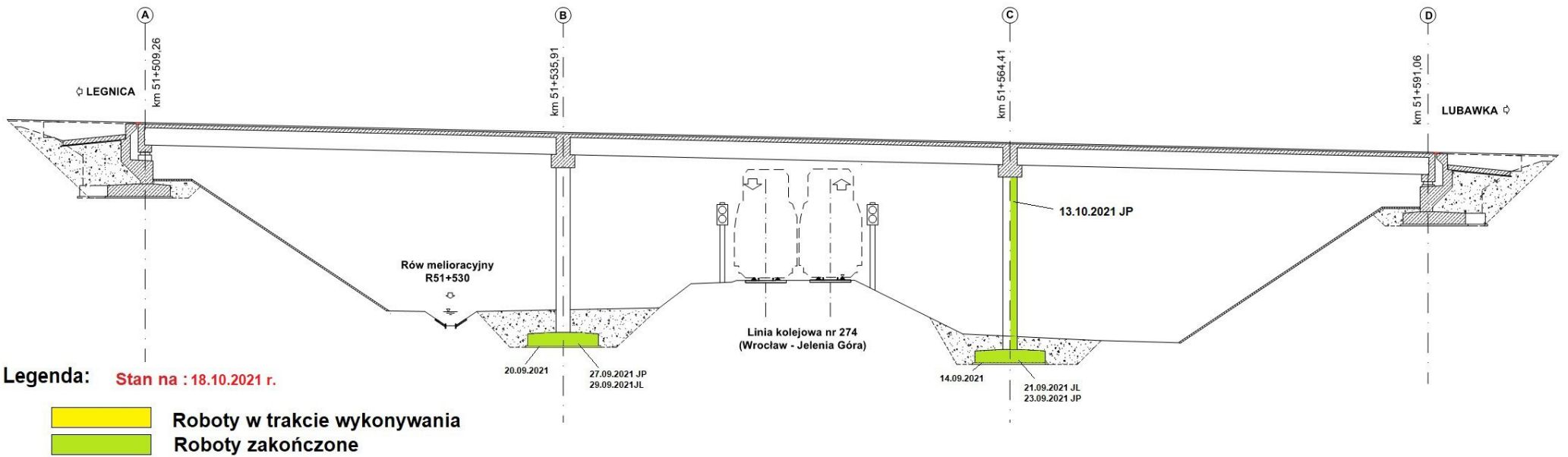
Legenda: Stan na dzień 18.10.2021 r.

- Roboty w trakcie wykonywania
- Roboty zakończone



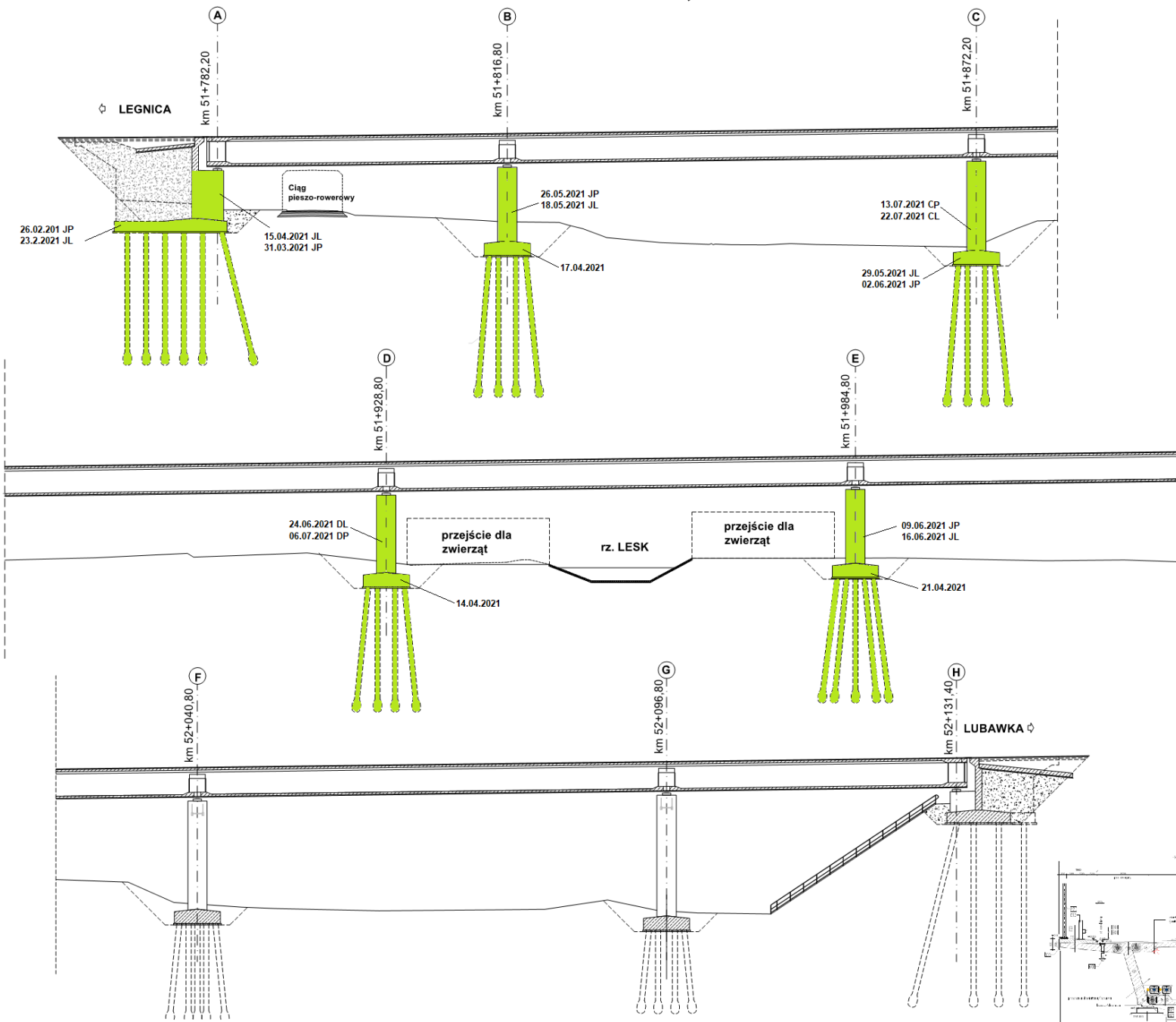


# WS-35 km 51+508,81



# WS-36

km 51+780,95



Legenda: Stan na 18.10.2021 r.

- Roboty w trakcie wykonywania
- Roboty zakończone

