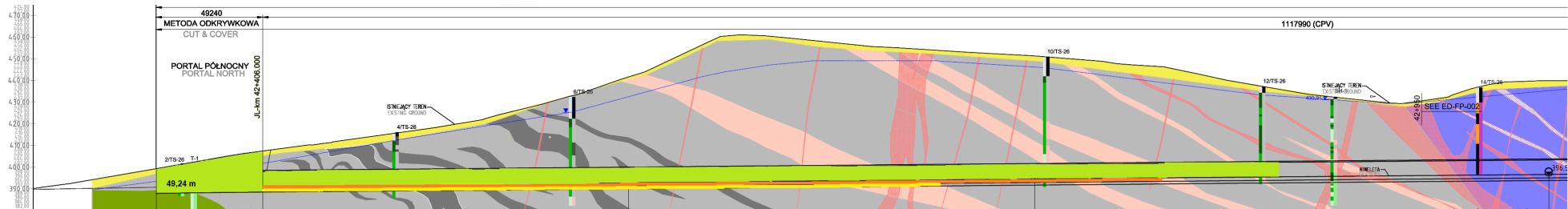


TS-26 PORTAL PÓLNOCNY  
NAWA WSCHODNIA - LEWA (NE)

← NAWA LEWA (JL) = NAWA WSCHODNIA (JL)  
KIERUNEK LEGNICA

- Legenda:  
Stan na dzień 11.10.2021
- KALOTA 469,20 m
  - SZTROSZA 415,20 m
  - SPAĞ 312,00 m

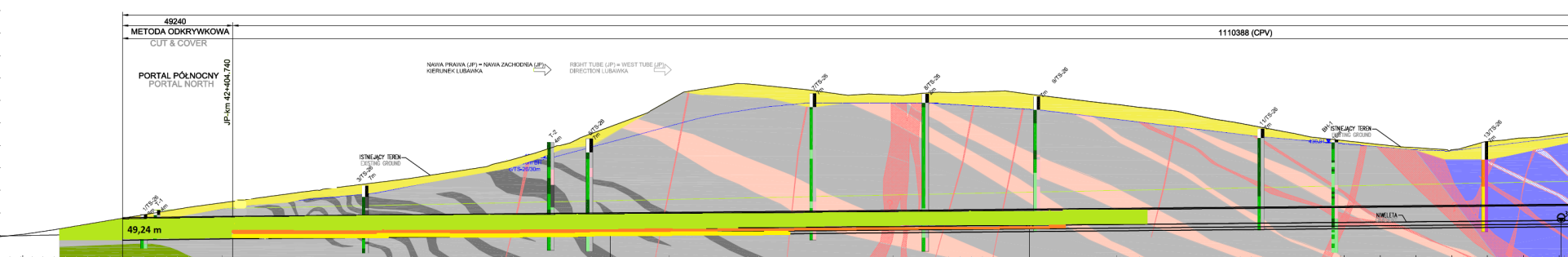


KILOMETRAŻ - JL [km] CHAINAGE - JL [km]	42+325.000	42+350.000	42+375.000	42+400.000	42+425.000	42+450.000	42+475.000	42+500.000	42+525.000	42+550.000	42+575.000	42+600.000	42+625.000	42+650.000	42+675.000	42+700.000	42+725.000	42+750.000	42+775.000	42+800.000	42+825.000	42+850.000	42+875.000	42+900.000	42+925.000	42+950.000	42+975.000	43+000.000	
POZIOM TERENU ISTNIEJĄCEGO [m] EXISTING GROUND LEVEL [m]	393.736	398.648	402.432	406.597	409.920	413.236	416.716	420.597	424.566	428.822	433.022	436.633	440.673	445.368	450.692	456.341	462.311	468.597	475.193	482.017	489.071	496.361	503.883	511.632	519.603	527.792	536.196	544.821	553.568
POZIOM NIWELETY [m] GRADIENT LEVEL [m]	390.893	391.192	391.436	391.681	391.927	392.173	392.419	392.665	392.911	393.157	393.403	393.649	393.895	394.141	394.387	394.633	394.879	395.125	395.371	395.617	395.863	396.109	396.355	396.601	396.847	397.093	397.339	397.585	397.831

# NITKA ZACHODNIA - PORTAL PÓŁNOCNY

**Legenda:**  
 Stan na dzień 11.10.2021

- KALOTA 409,70 m
- SZTROSZA 374,60 m
- SPĄG 249,80 m



mnpm = 380.00

KILOMETRAŻ - JP [km] CHAINAGE - JP [km]	42.325.000	42.350.000	42.375.000	42.400.000	42.425.000	42.450.000	42.475.000	42.500.000	42.525.000	42.550.000	42.575.000	42.600.000	42.625.000	42.650.000	42.675.000	42.700.000	42.725.000	42.750.000	42.775.000	42.800.000	42.825.000	42.850.000	42.875.000	42.900.000	42.925.000	42.950.000	42.975.000	43.000.000
POZIOM TERENU ISTNIEJĄCEGO [m] EXISTING GROUND LEVEL [m]	392,459	396,688	400,795	404,491	407,838	411,091	414,193	417,787	422,581	429,928	438,942	450,290	456,673	455,888	452,958	452,452	453,571	454,241	451,099	448,419	445,400	440,677	436,077	432,266	429,579	428,997	432,826	435,137
POZIOM NIWELETY [m] GRADIENT LEVEL [m]			390,910	391,206	391,447	391,671	391,895	392,118	392,342	392,566	392,790	393,014	393,238	393,462	393,685	393,909	394,133	394,357	394,581	394,805	395,028	395,252	395,476	395,700	395,924	396,148	396,373	396,597
WYJŚCIE AWARYJNE CROSS PASSAGE		JP-km 42.353.500				217988nn					CP1 JP-km 42.573.488			187500nn					CP2 JP-km 42.760.988					237512nn			CP3 JP-km 42.998.500	