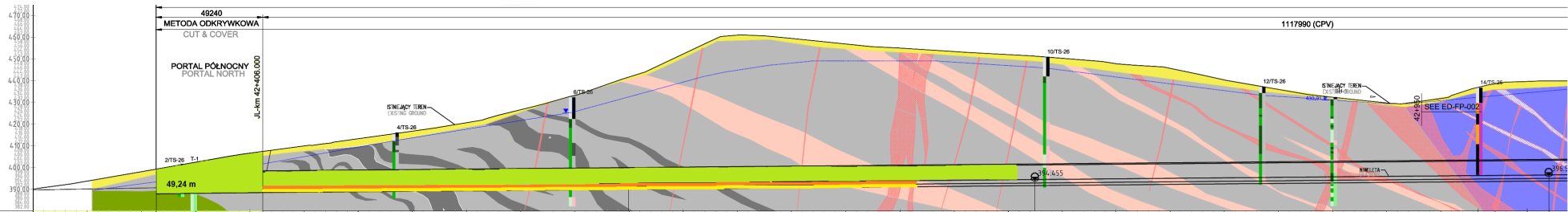


TS-26 PORTAL PÓLNOCNY
NAWA WSCHODNIA - LEWA (NE)

← NAWA LEWA (JL) = NAWA WSCHODNIA (JL)
KIERUNEK LEGNICA

- Legenda:
Stan na dzień 13.09.2021
- KALOTA 347,40 m
 - SZTROSZA 302,40 m
 - SPAĞ 302,40 m

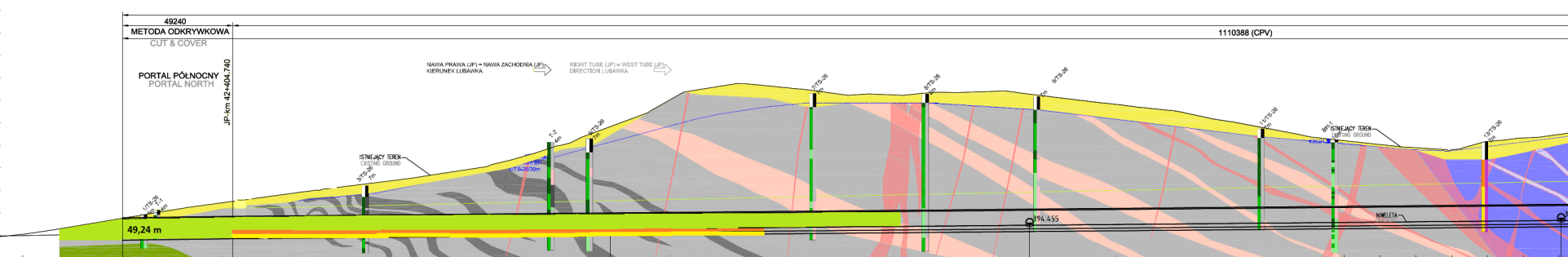


KILOMETRAŻ - JL [km] CHAINAGE - JL [km]	42+325.000	42+350.000	42+375.000	42+400.000	42+425.000	42+450.000	42+475.000	42+500.000	42+525.000	42+550.000	42+575.000	42+600.000	42+625.000	42+650.000	42+675.000	42+700.000	42+725.000	42+750.000	42+800.000	42+825.000	42+850.000	42+875.000	42+900.000	42+925.000	42+950.000	42+975.000	43+000.000
POZIOM TERENU ISTNIEJĄCEGO [m] EXISTING GROUND LEVEL [m]	393.736	398.648	402.432	406.597	409.920	413.236	416.716	420.597	424.566	428.822	433.022	437.234	438.873	439.368	438.898	434.972	433.341	431.907	430.893	429.597	428.296	426.928	425.538	424.226	422.912	421.754	420.624
POZIOM NIWELETY [m] GRADIENT LEVEL [m]	391.893	391.192	391.436	392.107	392.331	392.555	392.779	392.902	393.026	393.150	393.274	393.398	393.522	393.646	393.770	393.894	394.018	394.142	394.266	394.390	394.514	394.638	394.762	394.886	395.010	395.134	395.258

NITKA ZACHODNIA - PORTAL PÓŁNOCNY

Legenda:
Stan na dzień 13.09.2021

- KALOTA 299,30 m
- SZTROSZA 238,20 m
- SPĄG 238,20 m



mnpm = 380.00

KILOMETRAŻ - JP [km] CHAINAGE - JP [km]	42.325.000	42.350.000	42.375.000	42.400.000	42.425.000	42.450.000	42.475.000	42.500.000	42.525.000	42.550.000	42.575.000	42.600.000	42.625.000	42.650.000	42.675.000	42.700.000	42.725.000	42.750.000	42.775.000	42.800.000	42.825.000	42.850.000	42.875.000	42.900.000	42.925.000	42.950.000	42.975.000	43.000.000
POZIOM TERENU ISTNIEJĄCEGO [m] EXISTING GROUND LEVEL [m]	392,459	396,688	400,795	404,491	407,838	411,091	414,193	417,787	422,581	429,828	438,942	450,290	456,673	455,888	452,958	452,652	453,571	454,241	451,099	448,219	445,400	440,677	436,077	432,266	429,579	428,997	432,826	435,137
POZIOM NIWELETY [m] GRADIENT LEVEL [m]		390,910	391,206	391,447	391,671	391,895	392,118	392,342	392,566	392,790	393,014	393,238	393,462	393,685	393,909	394,133	394,357	394,581	394,805	395,028	395,252	395,476	395,700	395,924	396,148	396,373	396,597	
WYJŚCIE AWARYJNE CROSS PASSAGE		JP-km 42.353.500				217988nn				CP1 JP-km 42.573.488				187500nn				CP2 JP-km 42.760.988					237512nn			CP3 JP-km 42.998.500		