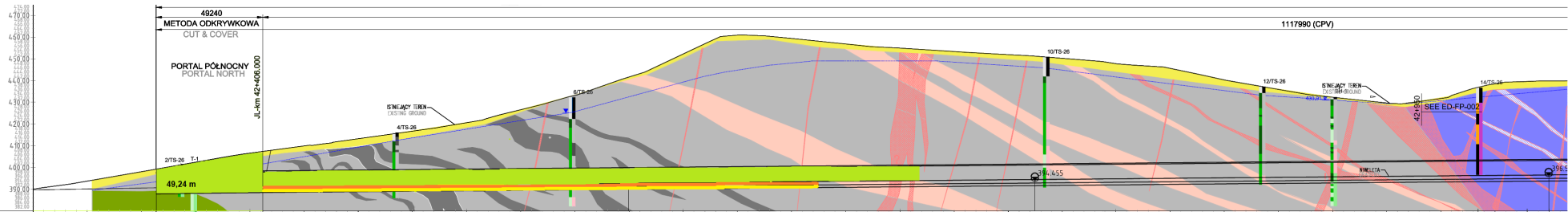


TS-26 PORTAL PÓLNOCNY
NAWA WSCHODNIA - LEWA (NE)

← NAWA LEWA (JL) = NAWA WSCHODNIA (JL)
KIERUNEK LEGNICA

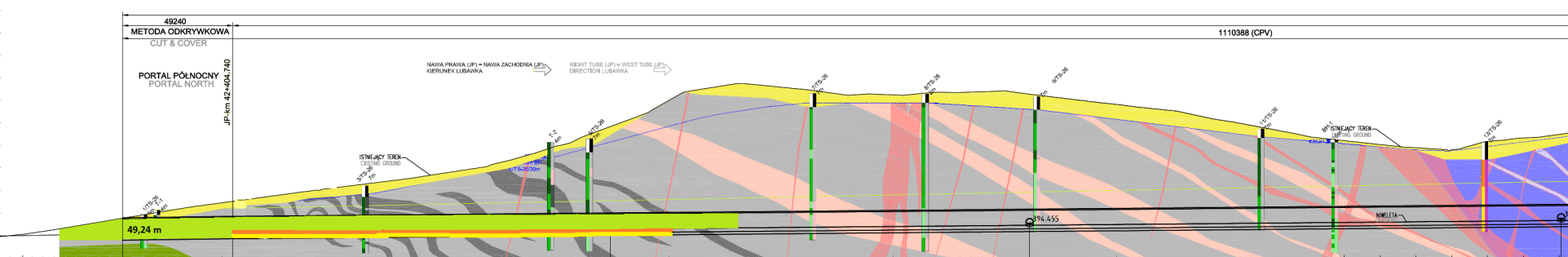
- Legenda:
Stan na dzień 31.08.2021
- KALOTA 303,30 m
 - SZTROSZA 254,40 m
 - SPAĞ 254,40 m



KILOMETRAŻ - JL [km] CHAINAGE - JL [km]	42+325.000	42+350.000	42+375.000	42+400.000	42+425.000	42+450.000	42+475.000	42+500.000	42+525.000	42+550.000	42+575.000	42+600.000	42+625.000	42+650.000	42+675.000	42+700.000	42+725.000	42+750.000	42+775.000	42+800.000	42+825.000	42+850.000	42+875.000	42+900.000	42+925.000	42+950.000	42+975.000	43+000.000	
POZIOM TERENU ISTNIEJĄCEGO [m] EXISTING GROUND LEVEL [m]	393,736	398,648	402,432	406,597	409,920	413,236	416,716	420,597	424,566	428,822	433,022	437,234	438,873	439,368	438,609	436,972	433,341	429,907	426,893	424,733	422,597	420,294	417,912	415,538	413,206	411,754	410,492	409,824	
POZIOM NIWELETY [m] GRADIENT LEVEL [m]	391,893	391,192	391,436	391,689	391,917	392,107	392,331	392,555	392,779	392,992	393,206	393,420	393,634	393,848	394,062	394,276	394,490	394,704	394,918	395,132	395,346	395,560	395,774	395,988	396,202	396,416	396,630	396,844	397,058

NITKA ZACHODNIA - PORTAL PÓŁNOCNY

- Legenda:**
 Stan na dzień 31.08.2021
- KALOTA 246,80 m
 - SZTROSZA 197,40 m
 - SPĄG 197,40 m



mnpm = 380.00

KILOMETRAŻ - JP [km] CHAINAGE - JP [km]	42.325.000	42.350.000	42.375.000	42.400.000	42.425.000	42.450.000	42.475.000	42.500.000	42.525.000	42.550.000	42.575.000	42.600.000	42.625.000	42.650.000	42.675.000	42.700.000	42.725.000	42.750.000	42.775.000	42.800.000	42.825.000	42.850.000	42.875.000	42.900.000	42.925.000	42.950.000	42.975.000	43.000.000
POZIOM TERENU ISTNIEJĄCEGO [m] EXISTING GROUND LEVEL [m]	392,459	396,688	400,795	404,491	407,838	411,091	414,193	417,787	422,581	429,828	438,942	450,290	456,673	455,888	452,958	452,652	453,571	454,241	451,099	448,219	445,400	440,677	436,077	432,266	429,579	428,997	432,826	435,137
POZIOM NIWELETY [m] GRADIENT LEVEL [m]		390,910	391,206	391,447	391,671	391,895	392,118	392,342	392,566	392,790	393,014	393,238	393,462	393,685	393,909	394,133	394,357	394,581	394,805	395,028	395,252	395,476	395,700	395,924	396,148	396,373	396,597	
WYJŚCIE AWARYJNE CROSS PASSAGE		JP-hn 42.353.500								217988nn	CP91 JP-hn 42.573.688			187500nn			CP92 JP-hn 42.760.988						237512nn			CP93 JP-hn 42.998.500		