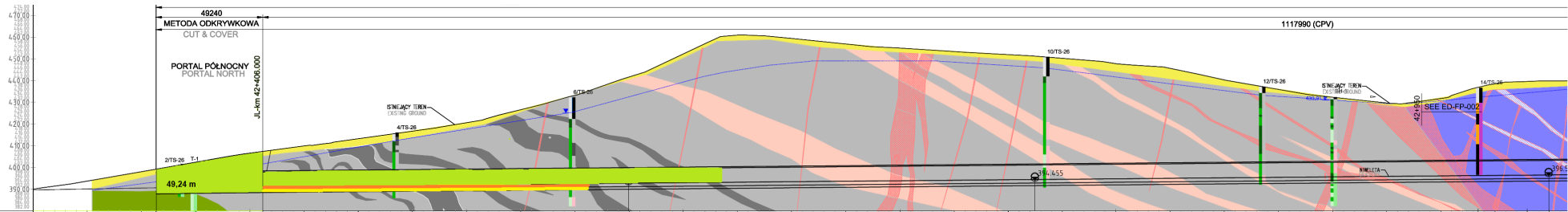


TS-26 PORTAL PÓLNOCNY
NAWA WSCHODNIA - LEWA (NE)

← NAWA LEWA (JL) = NAWA WSCHODNIA (JL)
KIERUNEK LEGNICA

- Legenda:
Stan na dzień 19.07.2021
- KALOTA 212,10 m
 - SZTROSZA 150,50 m
 - SPAĞ 150,50 m



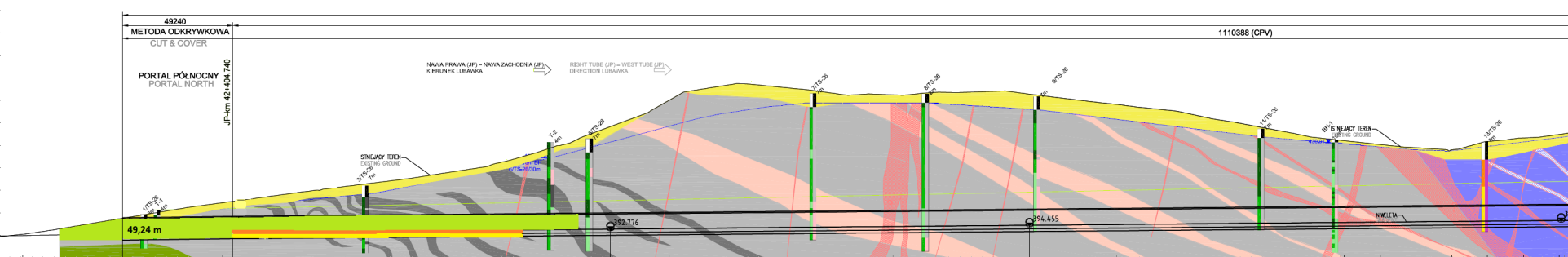
mnpm = 380.00

KILOMETRAŻ - JL [km] CHAINAGE - JL [km]	42+325.000	42+350.000	42+375.000	42+400.000	42+425.000	42+450.000	42+475.000	42+500.000	42+525.000	42+550.000	42+575.000	42+600.000	42+625.000	42+650.000	42+675.000	42+700.000	42+725.000	42+750.000	42+775.000	42+800.000	42+825.000	42+850.000	42+875.000	42+900.000	42+925.000	42+950.000	42+975.000	43+000.000
POZIOM TERENU ISTNIEJĄCEGO [m] EXISTING GROUND LEVEL [m]	391.736	398.848	402.432	406.597	409.920	413.236	416.716	420.597	426.566	433.822	441.633	452.234	460.873	459.368	456.809	454.972	453.341	451.907	450.893	447.733	445.597	444.294	435.938	432.206	429.676	421.754	438.492	438.824
POZIOM NIWELETY [m] GRADIENT LEVEL [m]	391.893	391.192	391.436	391.883	392.107	392.331	392.555	392.779	393.002	393.226	393.450	393.674	393.898	394.122	394.346	394.569	394.793	395.017	395.241	395.465	395.689	395.912	396.136	396.359	396.583	396.807	397.031	397.255

NITKA ZACHODNIA - PORTAL PÓŁNOCNY

Legenda:
 Stan na dzień **19.07.2021**

- KALOTA 153,80 m
- SZTROSZA 129,80 m
- SPĄG 129,80 m



mnpm = 380.00

KILOMETRAŻ - JP [km] CHAINAGE - JP [km]	42.325.000	42.350.000	42.375.000	42.400.000	42.425.000	42.450.000	42.475.000	42.500.000	42.525.000	42.550.000	42.575.000	42.600.000	42.625.000	42.650.000	42.675.000	42.700.000	42.725.000	42.750.000	42.775.000	42.800.000	42.825.000	42.850.000	42.875.000	42.900.000	42.925.000	42.950.000	42.975.000	43.000.000
POZIOM TERENU ISTNIEJĄCEGO [m] EXISTING GROUND LEVEL [m]	392,459	396,688	400,795	404,491	407,838	411,091	414,193	417,787	422,581	429,928	438,942	450,290	456,673	455,888	452,958	452,652	453,571	454,241	451,099	448,219	445,400	440,677	436,077	432,266	429,579	428,997	432,826	435,137
POZIOM NIWELETY [m] GRADIENT LEVEL [m]			390,910	391,206	391,447	391,671	391,895	392,118	392,342	392,566	392,790	393,014	393,238	393,462	393,685	393,909	394,133	394,357	394,581	394,805	395,028	395,252	395,476	395,700	395,924	396,148	396,373	396,597
WYJŚCIE AWARYJNE CROSS PASSAGE		JP-km 42.353.500								217988nn	CP1 JP-km 42.573.688			187500nn				CP2 JP-km 42.760.988					237512nn			CP3 JP-km 42.998.500		