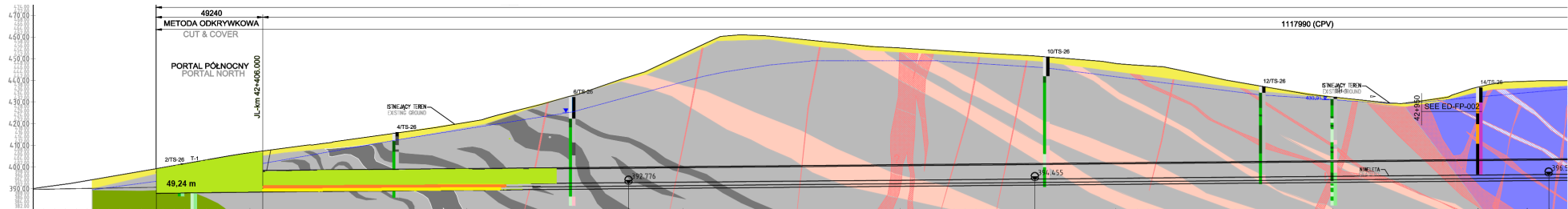


TS-26 PORTAL PÓLNOCNY
NAWA WSCHODNIA - LEWA (NE)

← NAWA LEWA (JL) = NAWA WSCHODNIA (JL)
KIERUNEK LEGNICA

- Legenda:
Stan na dzień 14.06.2021
- KALOTA 139,00 m
 - SZTROSZA 112,50 m
 - SPAĞ 109,00 m



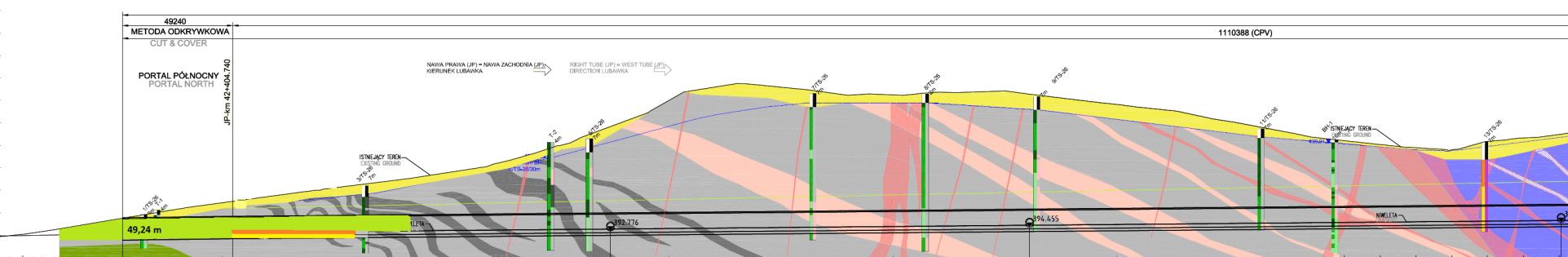
mnpm = 380.00

KILOMETRAŻ - JL [km] CHAINAGE - JL [km]	42+325.000	42+350.000	42+375.000	42+400.000	42+425.000	42+450.000	42+475.000	42+500.000	42+525.000	42+550.000	42+575.000	42+600.000	42+625.000	42+650.000	42+675.000	42+700.000	42+725.000	42+750.000	42+775.000	42+800.000	42+825.000	42+850.000	42+875.000	42+900.000	42+925.000	42+950.000	42+975.000	43+000.000	
POZIOM TERENU ISTNIEJĄCEGO [m] EXISTING GROUND LEVEL [m]	393.736	398.648	402.432	406.500	409.920	413.236	416.716	420.597	426.566	433.822	441.633	452.234	460.873	459.368	456.809	454.972	453.341	451.907	450.893	447.733	445.597	444.294	443.598	439.689	429.676	421.754	438.492	396.824	
POZIOM NIWELETY [m] GRADIENT LEVEL [m]	391.893	391.192	391.436	391.559	391.883	392.107	392.331	392.555	392.779	392.802	392.826	392.850	392.874	392.898	392.922	392.946	392.969	392.993	393.017	393.041	393.065	393.089	393.113	393.137	393.161	393.185	393.209	393.233	393.257

NITKA ZACHODNIA - PORTAL PÓŁNOCNY

Legenda:
 Stan na dzień 14.06.2021

- KALOTA 79,40 m
- SZTROSZA 55,00 m
- SPĄG 55,00 m



mnpm = 380.00

KILOMETRAŻ - JP [km] CHAINAGE - JP [km]	42.325.000	42.350.000	42.375.000	42.400.000	42.425.000	42.450.000	42.475.000	42.500.000	42.525.000	42.550.000	42.575.000	42.600.000	42.625.000	42.650.000	42.675.000	42.700.000	42.725.000	42.750.000	42.775.000	42.800.000	42.825.000	42.850.000	42.875.000	42.900.000	42.925.000	42.950.000	42.975.000	43.000.000
POZIOM TERENU ISTNIEJĄCEGO [m] EXISTING GROUND LEVEL [m]	392,459	396,688	400,795	404,491	407,838	411,091	414,193	417,787	422,581	429,928	438,942	450,290	456,673	455,888	452,958	452,652	453,571	454,241	451,099	448,219	445,400	440,677	436,077	432,266	429,579	428,997	432,826	435,137
POZIOM NIWELETY [m] GRADIENT LEVEL [m]			390,910	391,206	391,447	391,671	391,895	392,118	392,342	392,566	392,790	393,014	393,238	393,462	393,685	393,909	394,133	394,357	394,581	394,805	395,028	395,252	395,476	395,700	395,924	396,148	396,373	396,597
WYJŚCIE AWARYJNE CROSS PASSAGE		JP-km 42.353.500								217988nn	CP1 JP-km 42.573.688			187500nn				CP2 JP-km 42.760.988					237512nn				CP3 JP-km 42.998.500	