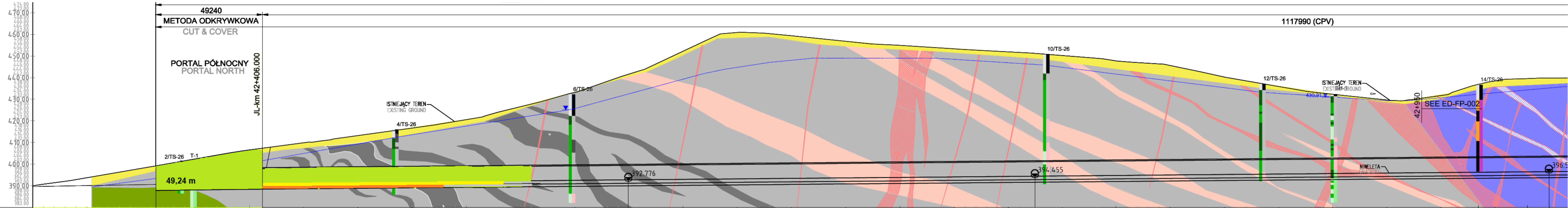


# TS-26 PORTAL PÓŁNOCNY NAWA WSCHODNIA - LEWA (NE)

← NAWA LEWA (JL) = NAWA WSCHODNIA (JL)  
KIERUNEK LEGNICA

- Legenda:**  
Stan na dzień 08.06.2021
- KALOTA 126,70 m
  - SZTROSA 112,50 m
  - SPAG 84,20 m

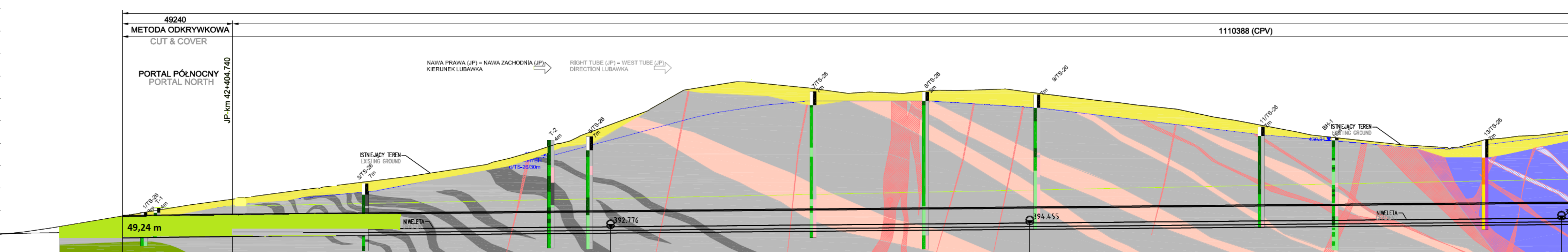
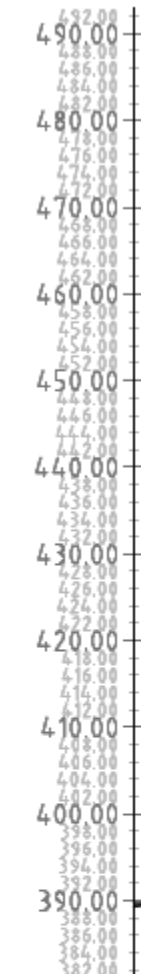


KILOMETRAŻ - JL [km] CHAINAGE - JL [km]	42+325.000	42+350.000	42+375.000	42+400.000	42+425.000	42+450.000	42+475.000	42+500.000	42+525.000	42+550.000	42+575.000	42+600.000	42+625.000	42+650.000	42+675.000	42+700.000	42+725.000	42+750.000	42+775.000	42+800.000	42+825.000	42+850.000	42+875.000	42+900.000	42+925.000	42+950.000	42+975.000	43+000.000
POZIOM TERENU ISTNIEJĄCEGO [m] EXISTING GROUND LEVEL [m]	393.736	398.049	402.432	406.597	409.920	413.236	416.716	420.597	426.566	433.122	441.633	452.234	460.873	459.368	456.809	454.912	453.341	451.907	450.193	447.733	445.597	440.294	435.938	432.326	429.676	431.754	438.492	439.824
POZIOM NIWELETY [m] GRADIENT LEVEL [m]			390.893	391.192	391.436	391.559	391.883	392.107	392.331	392.555	392.779	393.002	393.226	393.450	393.674	393.898	394.122	394.346	394.569	394.793	395.017	395.241	395.465	395.689	395.912	396.136	396.359	396.583

# NITKA ZACHODNIA - PORTAL PÓLNOCNY

**Legenda:**  
 Stan na dzień 08.06.2021

- KALOTA 74,60 m
- SZTROSA
- SPAĞ



mnpm = 380.00

KILOMETRAŻ - JP [km] CHAINAGE - JP [km]	42+325.000	42+350.000	42+375.000	42+400.000	42+425.000	42+450.000	42+475.000	42+500.000	42+525.000	42+550.000	42+575.000	42+600.000	42+625.000	42+650.000	42+675.000	42+700.000	42+725.000	42+750.000	42+775.000	42+800.000	42+825.000	42+850.000	42+875.000	42+900.000	42+925.000	42+950.000	42+975.000	42+1000.000
POZIOM TERENU ISTNIEJĄCEGO [m] EXISTING GROUND LEVEL [m]	392.459	396.668	400.195	404.494	407.838	411.091	414.193	417.187	422.581	429.928	438.942	450.090	456.673	455.888	452.958	452.452	453.571	454.241	451.099	448.219	445.400	440.677	436.077	432.266	429.579	428.097	432.626	435.237
POZIOM NIWELETY [m] GRADIENT LEVEL [m]			390.910	391.206	391.447	391.671	391.895	392.118	392.342	392.566	392.790	393.014	393.238	393.462	393.685	393.909	394.133	394.357	394.581	394.805	395.028	395.252	395.476	395.700	395.924	396.148	396.373	396.597
WYJŚCIE AWARYJNE CROSS PASSAGE		JP-km 42+355.500								217988mm	JP-km 42+573.488			187500mm					JP-km 42+750.988					237512mm				JP-km 42+998.500