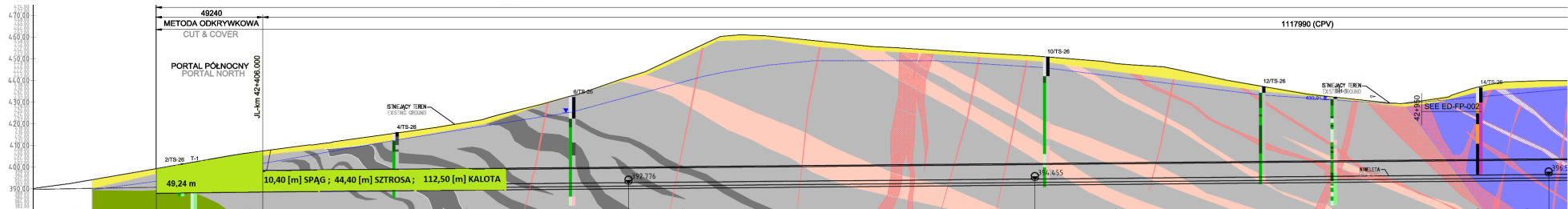


TS-26 PORTAL PÓŁNOCNY
NAWA WSCHODNIA - LEWA (NE)

← NAWA LEWA (JL) = NAWA WSCHODNIA (JL)
KIERUNEK LEGNICA

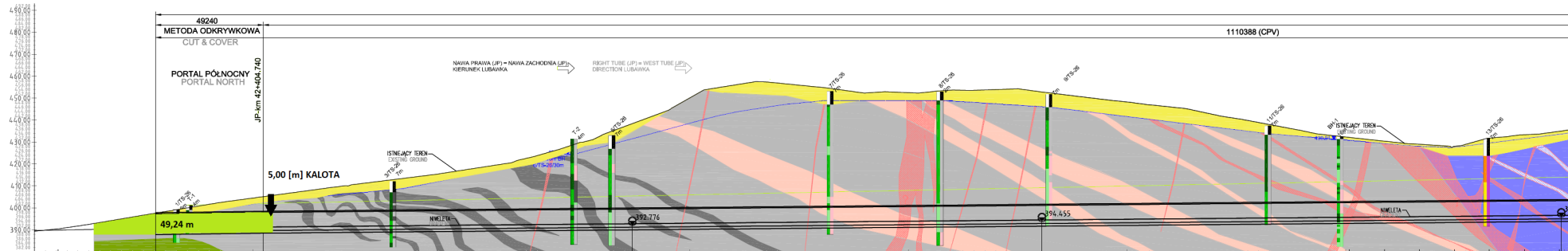
Legenda:
Stan na dzień 10.05.2021
- wykop (drażenie)



mnpm = 380.00

KILOMETRAŻ - JL [km] CHAINAGE - JL [km]	42+325.000	42+350.000	42+375.000	42+400.000	42+425.000	42+450.000	42+475.000	42+500.000	42+525.000	42+550.000	42+575.000	42+600.000	42+625.000	42+650.000	42+675.000	42+700.000	42+725.000	42+750.000	42+775.000	42+800.000	42+825.000	42+850.000	42+875.000	42+900.000	42+925.000	42+950.000	42+975.000	43+000.000
POZIOM TERENU ISTNIEJĄCEGO [m] EXISTING GROUND LEVEL [m]	393.736	398.848	402.432	406.597	409.920	413.236	416.716	420.597	424.566	428.822	433.022	436.833	440.873	445.368	449.972	454.341	458.341	461.927	465.509	469.017	472.597	476.241	479.829	483.455	487.080	490.692	494.292	497.882
POZIOM NIWELETY [m] GRADIENT LEVEL [m]			390.893	391.161	391.436	391.659	391.883	392.107	392.331	392.555	392.779	392.802	392.826	392.850	392.874	392.898	392.922	392.946	392.969	392.991	393.011	393.031	393.051	393.071	393.091	393.111	393.131	393.151

NITKA ZACHODNIA - PORTAL PÓŁNOCNY



Legenda:
 Stan na dzień **10.05.2021**
 - wykop (drażenie)

mnpm = 380.00

KILOMETRAŻ - JP [km] CHAINAGE - JP [km]	42.325000	42.350000	42.375000	42.400000	42.425000	42.450000	42.475000	42.500000	42.525000	42.550000	42.575000	42.600000	42.625000	42.650000	42.675000	42.700000	42.725000	42.750000	42.775000	42.800000	42.825000	42.850000	42.875000	42.900000	42.925000	42.950000	42.975000	43.000000
POZIOM TERENU ISTNIEJĄCEGO [m] EXISTING GROUND LEVEL [m]	392.459	396.688	400.795	404.491	407.838	411.091	414.193	417.787	422.581	429.928	438.942	450.290	456.673	455.888	452.958	452.652	453.571	454.241	451.099	448.219	445.400	440.677	436.077	432.266	429.579	428.997	432.826	435.137
POZIOM NIWELETY [m] GRADIENT LEVEL [m]		390.910	391.206	391.447	391.671	391.895	392.118	392.342	392.566	392.790	393.014	393.238	393.462	393.685	393.909	394.133	394.357	394.581	394.805	395.028	395.252	395.476	395.700	395.924	396.148	396.373	396.597	
WYJŚCIE AWARYJNE CROSS PASSAGE		JP-hn 42.3535.500								217988nn	CPV1 JP-hn 42.5734.888			187500nn			CPV2 JP-hn 42.760988					237512nn					CPV3 JP-hn 42.998500	